

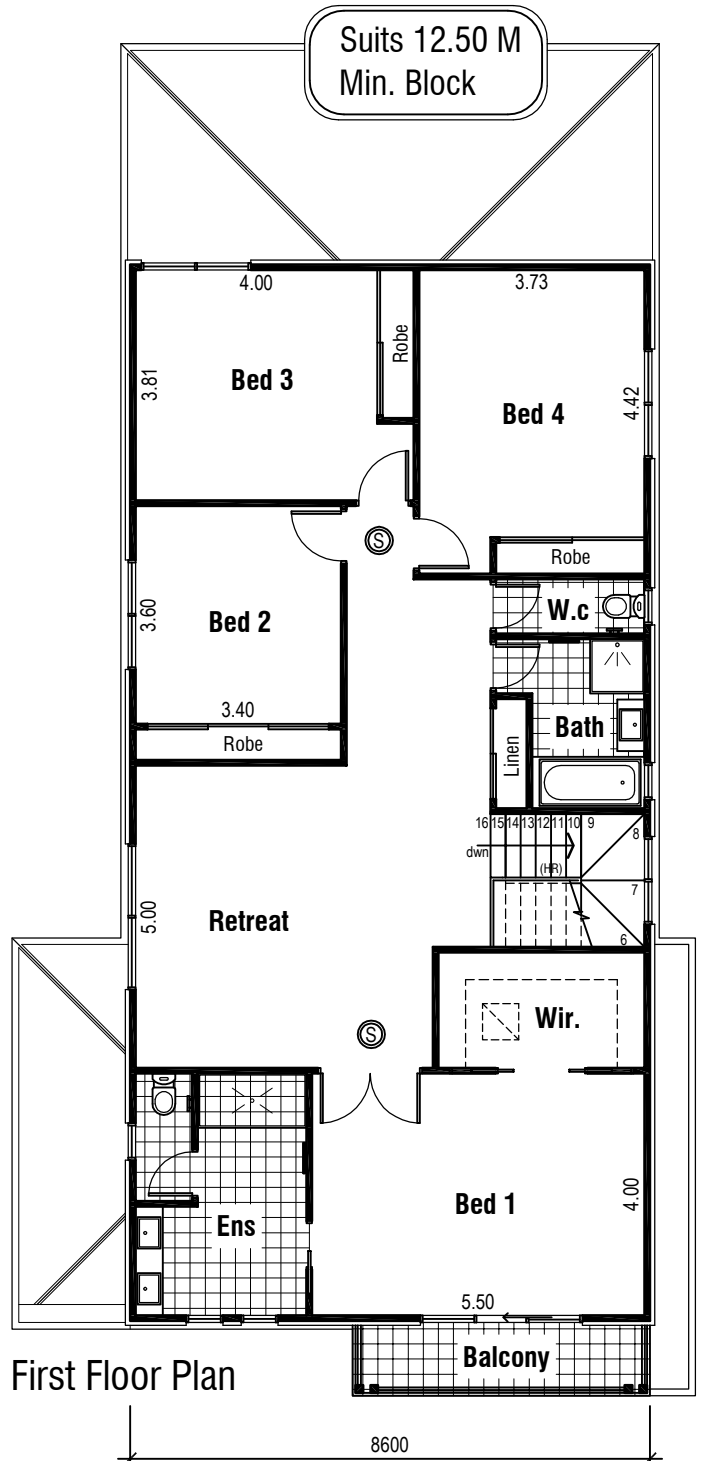
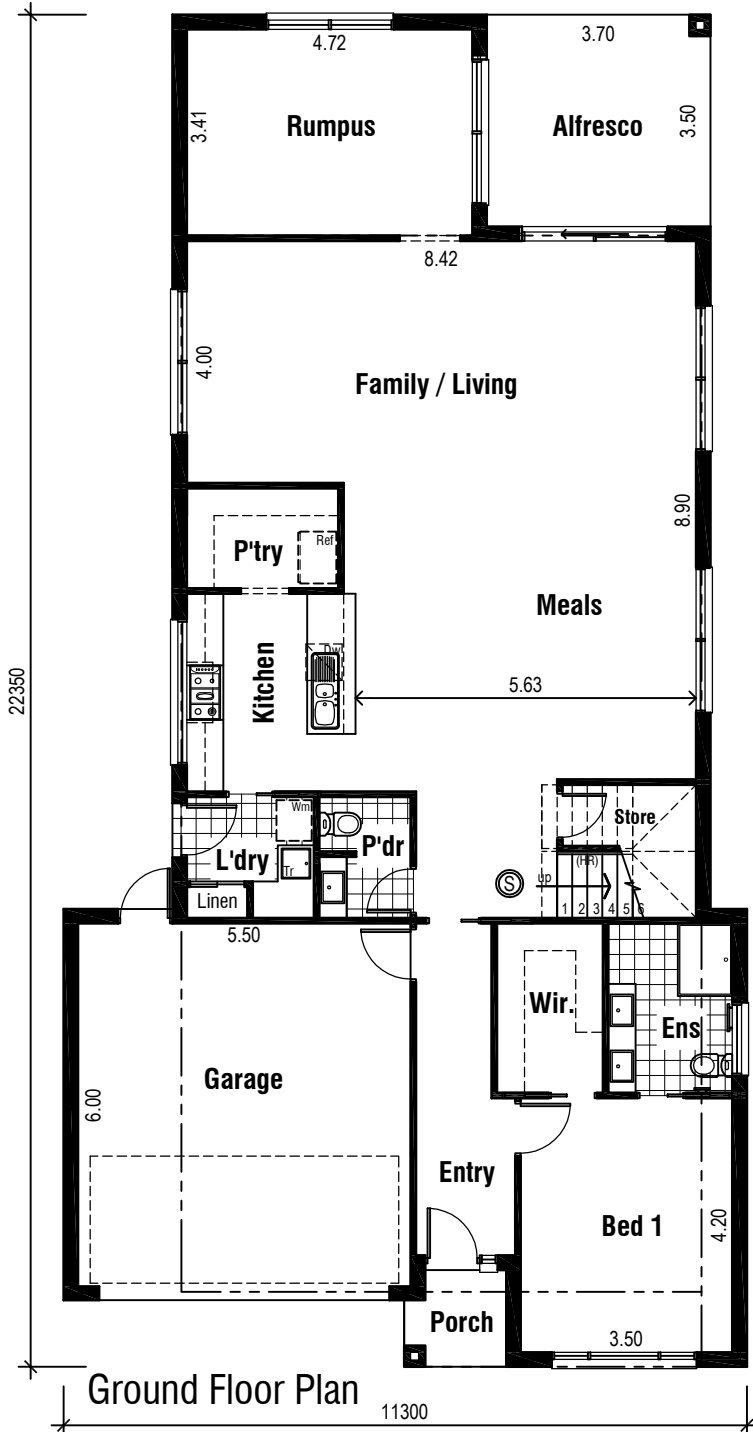
ADELAIDE 39



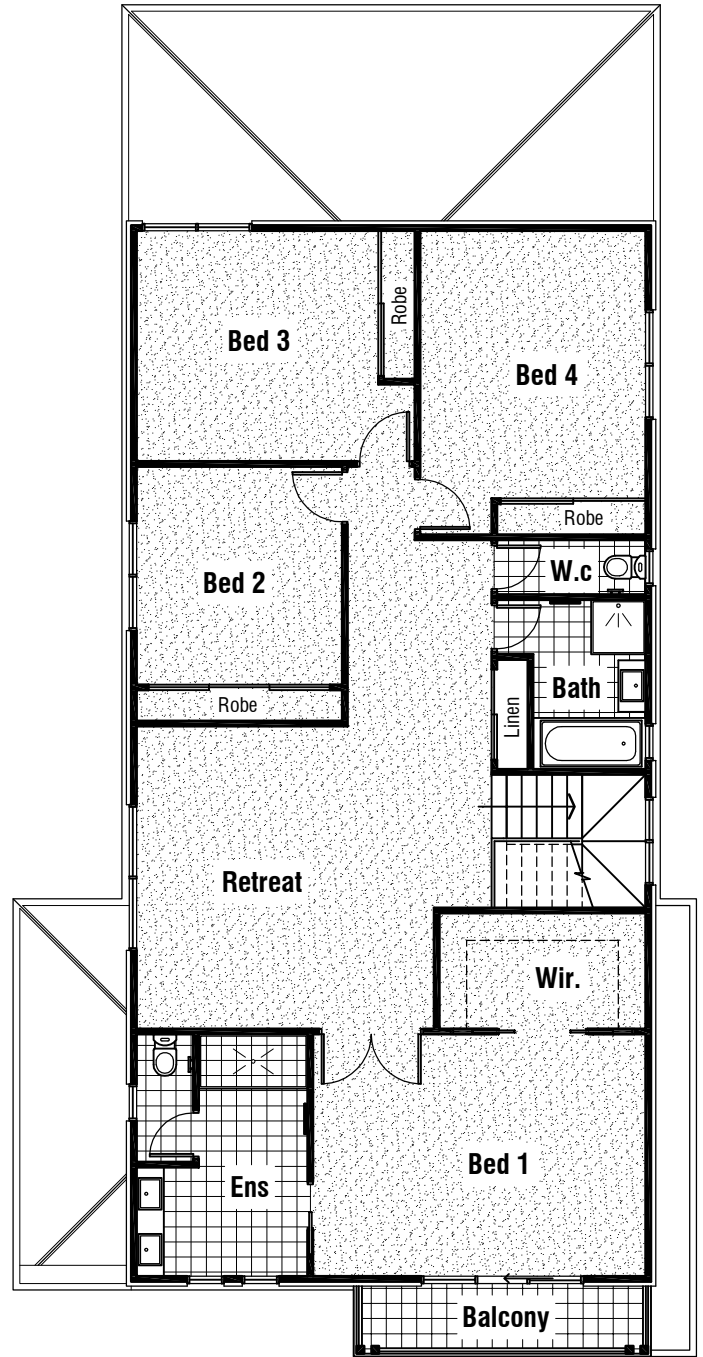
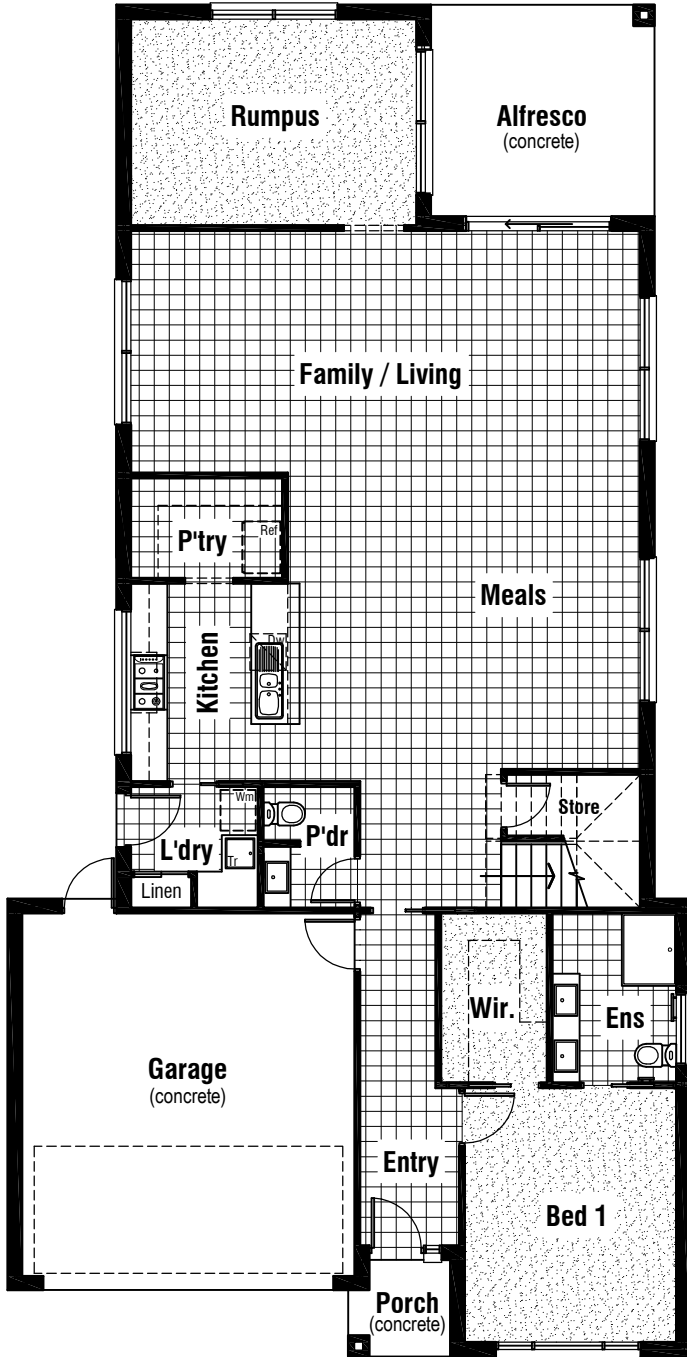
Areas Analysis :

Ground Floor :	159.10 m ²	17.13 sqs
First Floor :	150.16 m ²	16.16 sqs
Garage :	36.31 m ²	
Porch :	2.53 m ²	
Alfresco :	12.95 m ²	
Balcony :	6.10 m ²	
Total :	367.15 m²	39.52 sqs

Front Elevation



ADELAIDE 39



Floor Coverings Plan



Ceramic Tiles





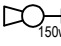








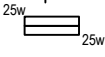


Carpet Areas

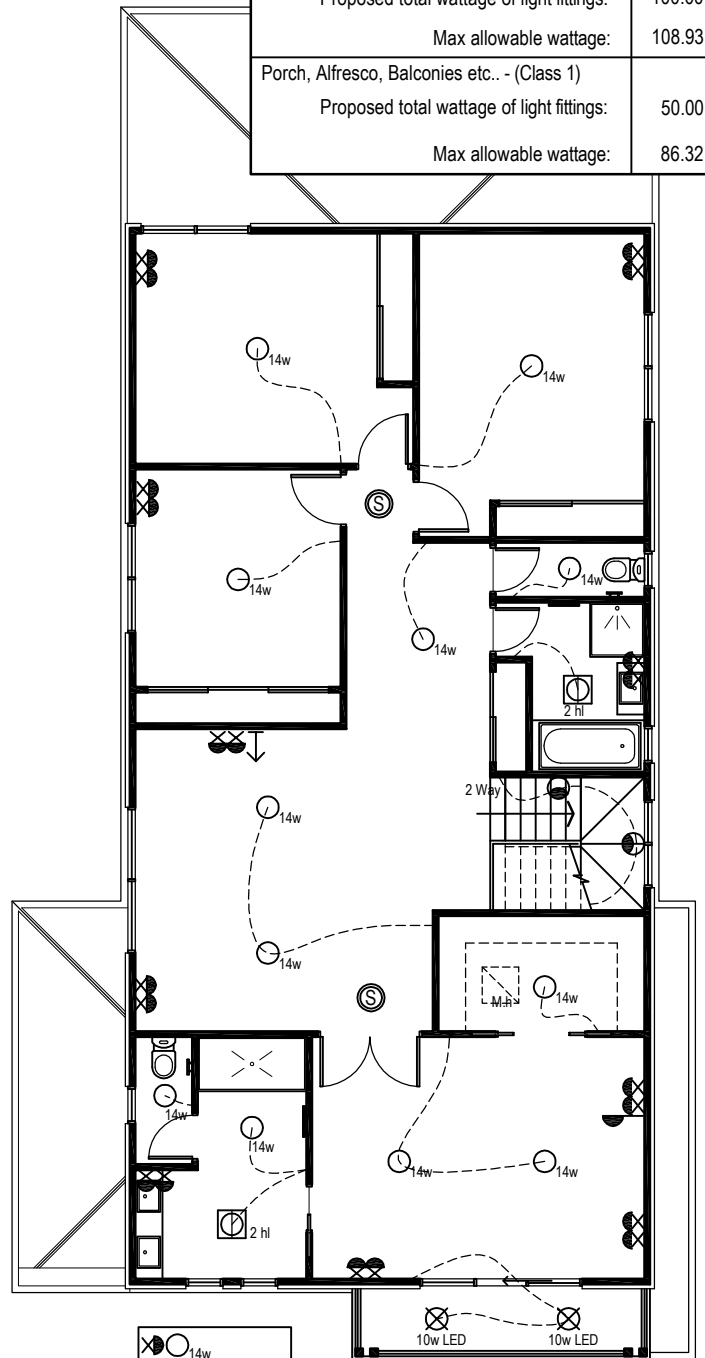
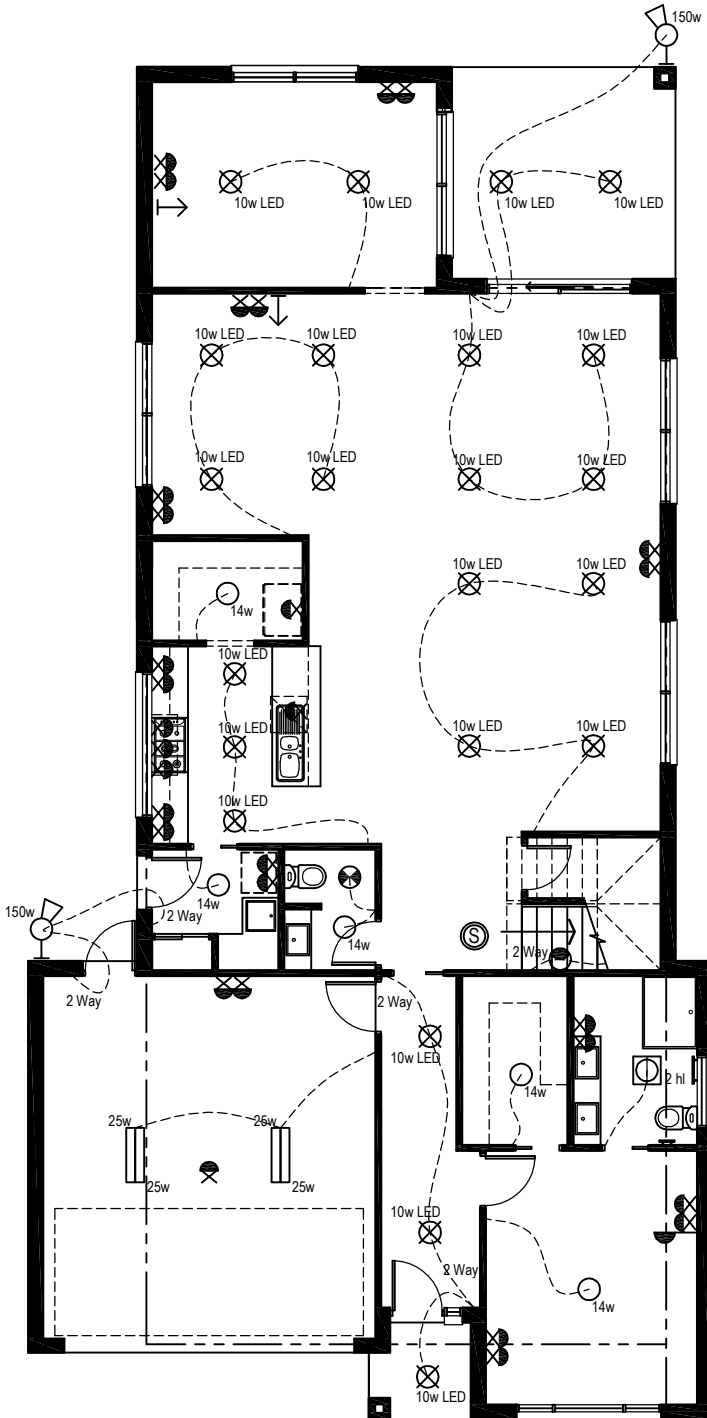



ADELAIDE 39

Electrical Legend

-  Smoke Alarm
-  Electrical meter box
-  Ceiling mounted Oyster fitting with 14 watt globe
-  Ceiling mounted downlight 10 watt L.E.D Globe
-  Wall mounted external flood light with 150 watt globe
-  18 watt wall mounted flush light. 500mm above stair tread
-  3 in 1 - Exhaust Fan with 'draft stopper', Light & 2 x Heat globes
-  Weatherproof External Double GPO
-  Double GPO
-  Single GPO
-  Exhaust Fan - with 'draft stopper'
-  TV point
-  Phone point
-  Ceiling mounted double fluro light with 25 watt globe

Wattage Allowance	
Internal of dwelling - (Class 1)	
Proposed total wattage of light fittings:	496.00 w
Max allowable wattage:	1546.30 w
Internal of garage - (Class 10)	
Proposed total wattage of light fittings:	100.00 w
Max allowable wattage:	108.93 w
Porch, Alfresco, Balconies etc.. - (Class 1)	
Proposed total wattage of light fittings:	50.00 w
Max allowable wattage:	86.32 w



 Single GPO & batten light for heating/cooling unit within roof space

Proposed Electrical Plan

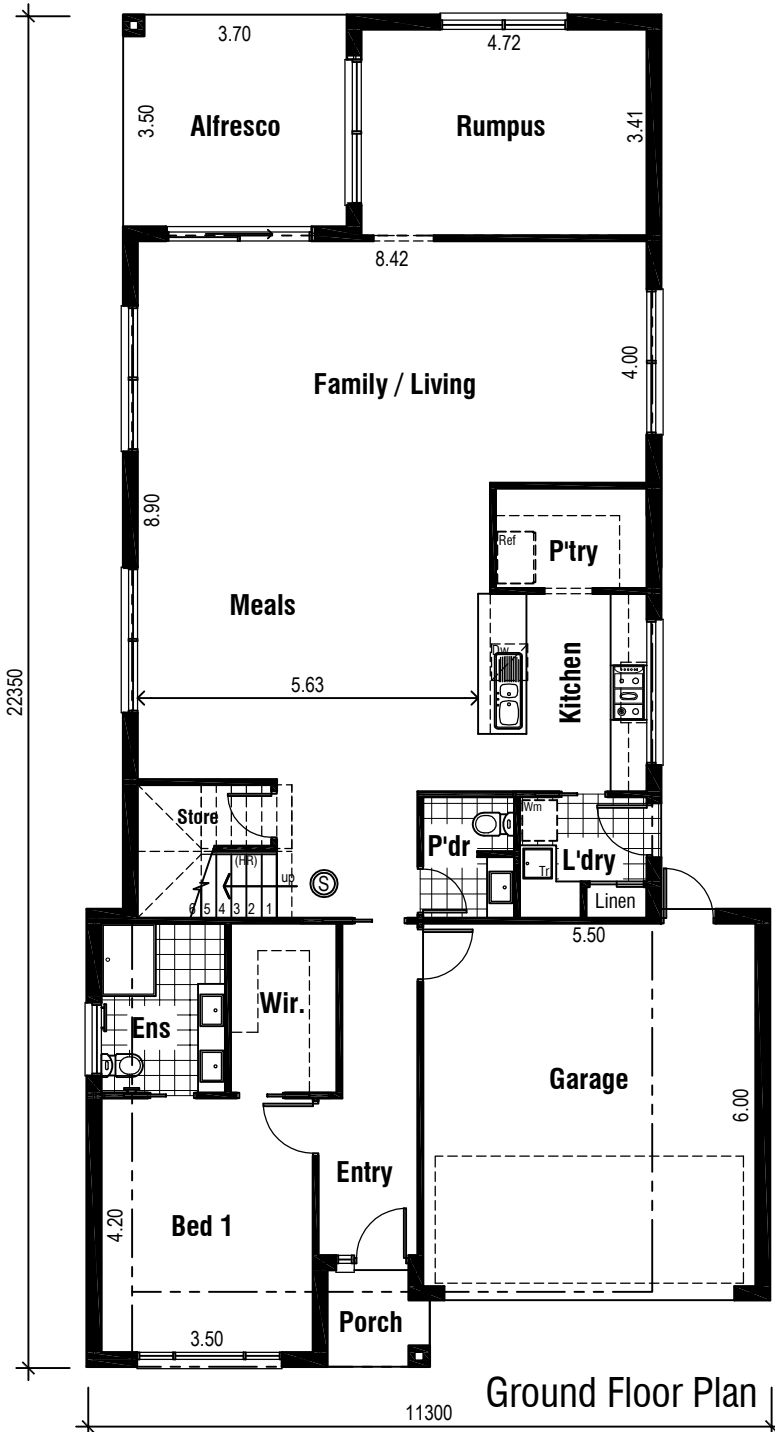
ADELAIDE 39



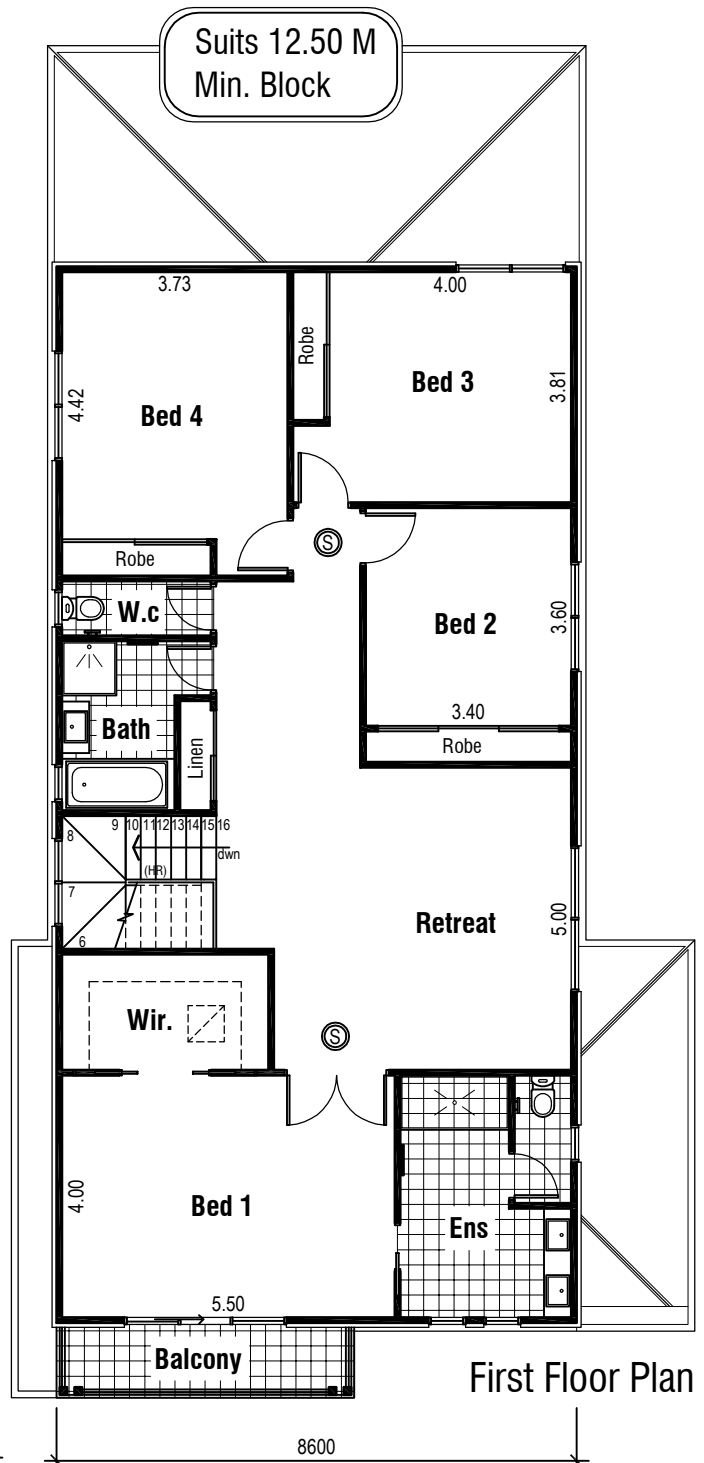
Areas Analysis :

Ground Floor :	159.10 m2	17.13 sqs
First Floor :	150.16 m2	16.16 sqs
Garage :	36.31 m2	
Porch :	2.53 m2	
Alfresco :	12.95 m2	
Balcony :	6.10 m2	
Total :	367.15 m2	39.52 sqs

Front Elevation



Ground Floor Plan



First Floor Plan