

# ADELAIDE 36

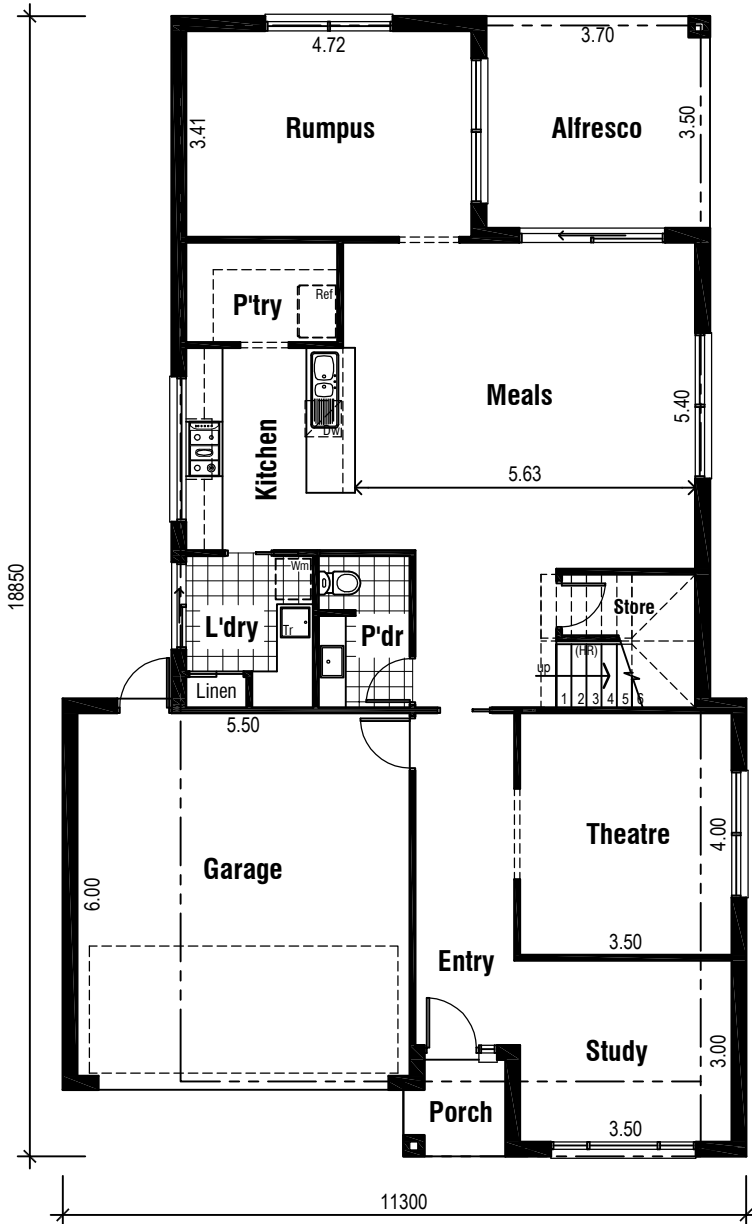


Front Elevation

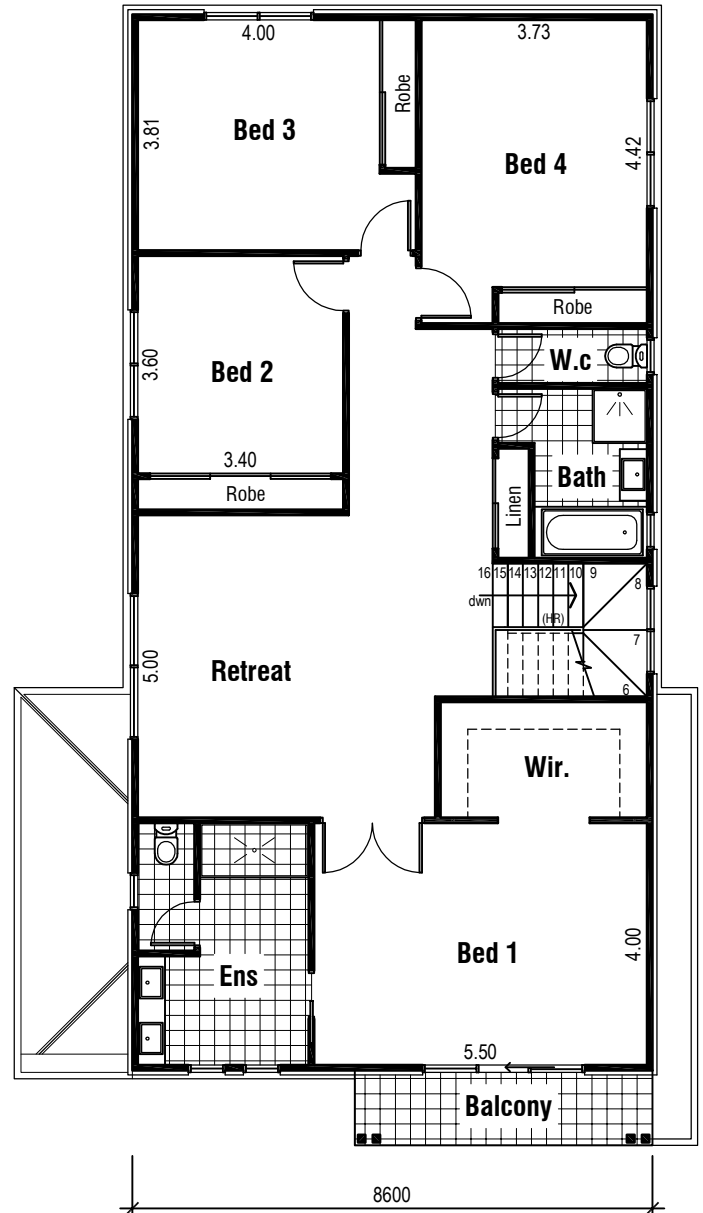
### Areas Analysis :

Ground Floor :	127.95 m <sup>2</sup>	13.77 sqs
First Floor :	150.16 m <sup>2</sup>	16.16 sqs
Garage :	36.31 m <sup>2</sup>	
Porch :	2.53 m <sup>2</sup>	
Alfresco :	12.95 m <sup>2</sup>	
Balcony :	6.10 m <sup>2</sup>	
<b>Total :</b>	<b>336.00 m<sup>2</sup></b>	<b>36.17 sqs</b>

Suits 12.50 M  
Min. Block

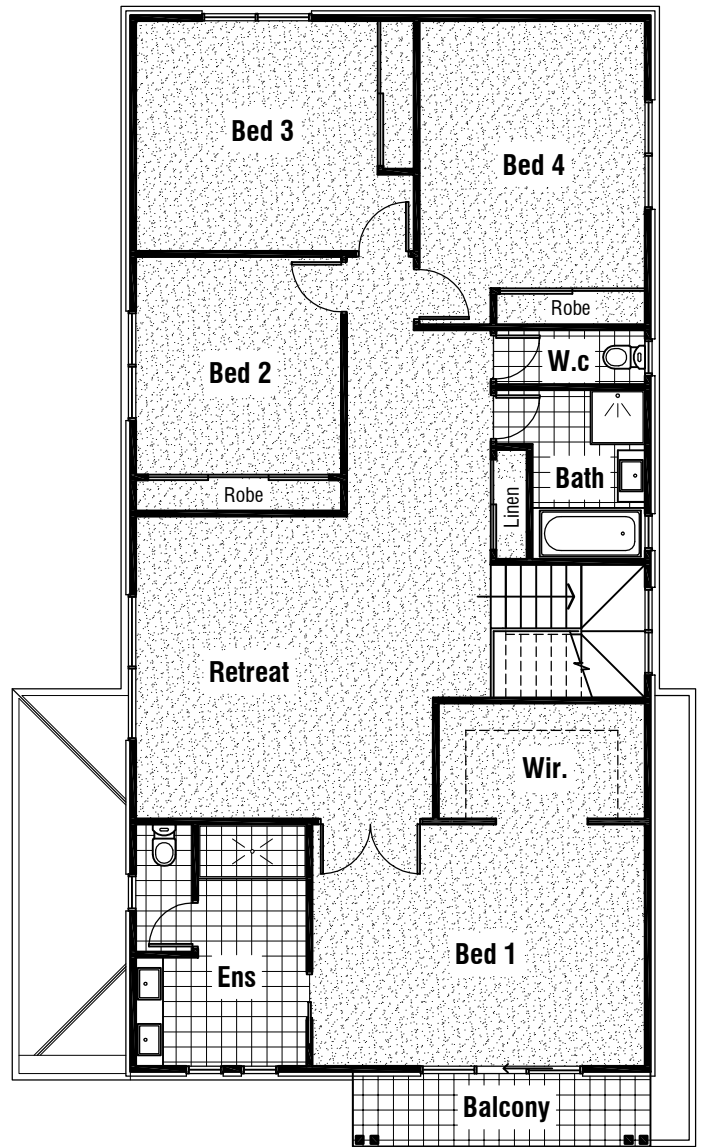
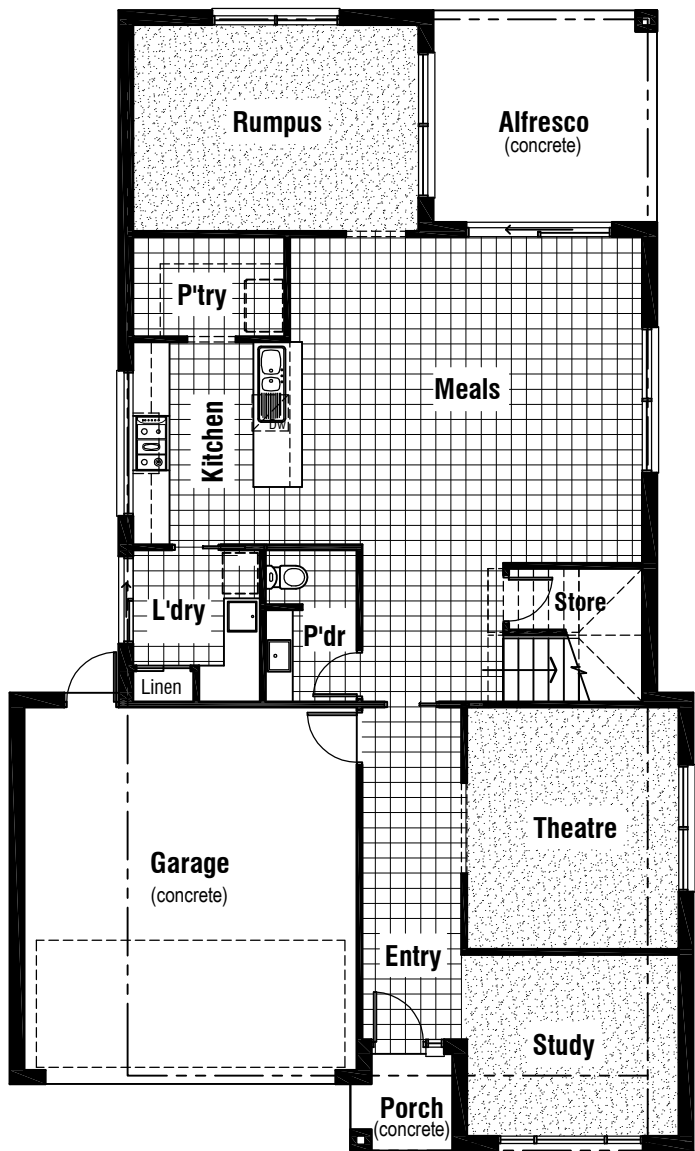


Ground Floor Plan



First Floor Plan

# ADELAIDE 36



## Floor Coverings Plan



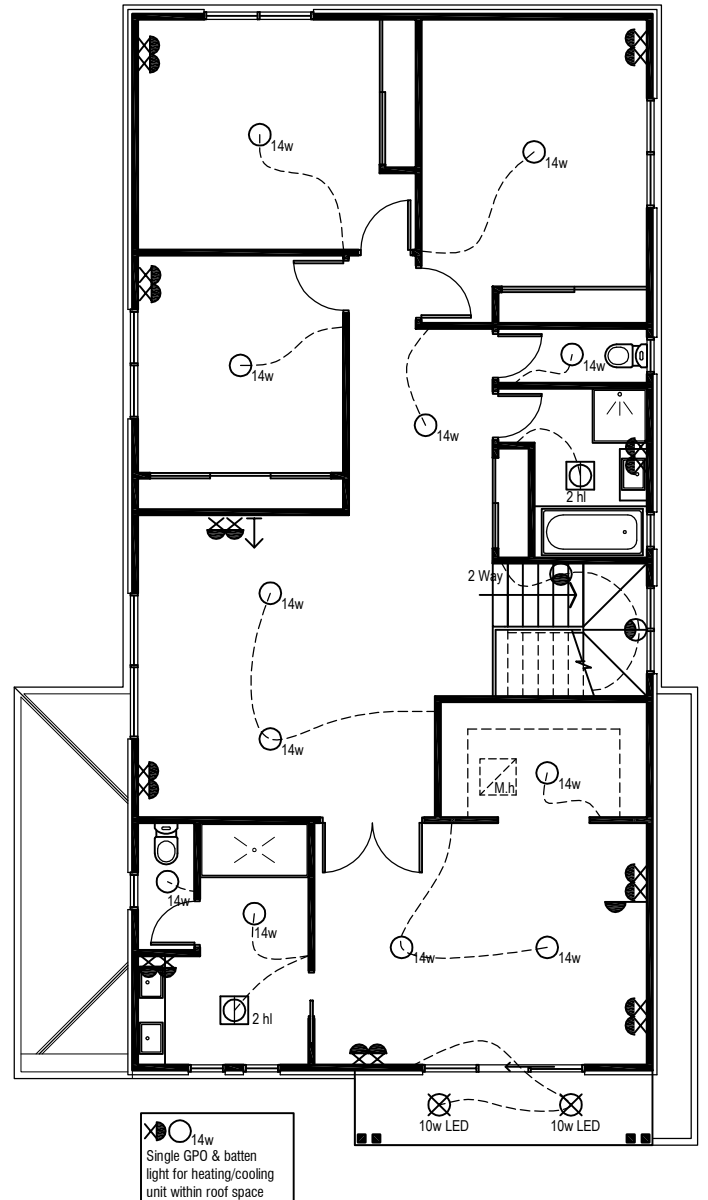
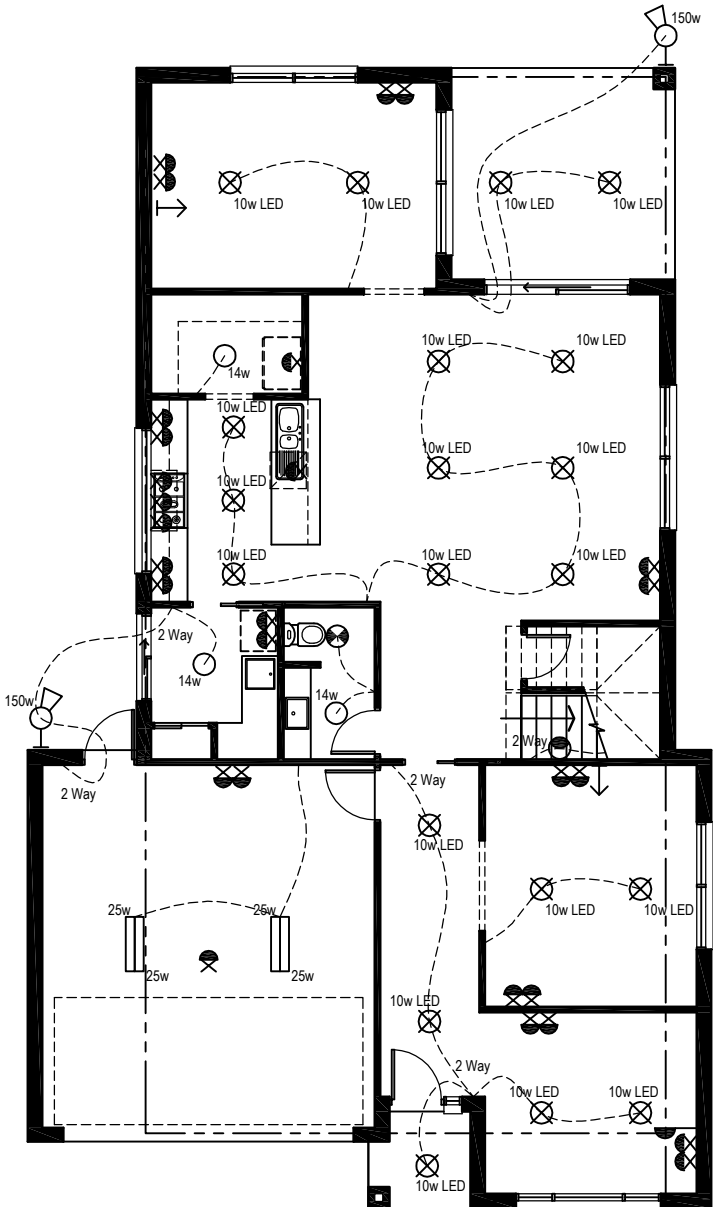


# ADELAIDE 36

## Electrical Legend

	Smoke Alarm		Weatherproof External Double GPO
	Electrical meter box		Double GPO
	Ceiling mounted Oyster fitting with 14 watt globe		Single GPO
	Ceiling mounted downlight 10 watt L.E.D Globe		Exhaust Fan - with 'draft stopper'
	Wall mounted external flood light with 150 watt globe		TV point
	Wall mounted light outlet		Phone point
	3 in 1 - Exhaust Fan with 'draft stopper', Light & 2 x Heat globes		Ceiling mounted double fluro light with 25 watt globe

Wattage Allowance	
Internal of dwelling - (Class 1)	
Proposed total wattage of light fittings:	422.00 w
Max allowable wattage:	1390.55 w
Internal of garage - (Class 10)	
Proposed total wattage of light fittings:	100.00 w
Max allowable wattage:	108.93 w
Porch, Alfresco, Balconies etc.. - (Class 1)	
Proposed total wattage of light fittings:	50.00 w
Max allowable wattage:	86.32 w



14w  
Single GPO & batten light for heating/cooling unit within roof space

Proposed Electrical Plan

# ADELAIDE 36

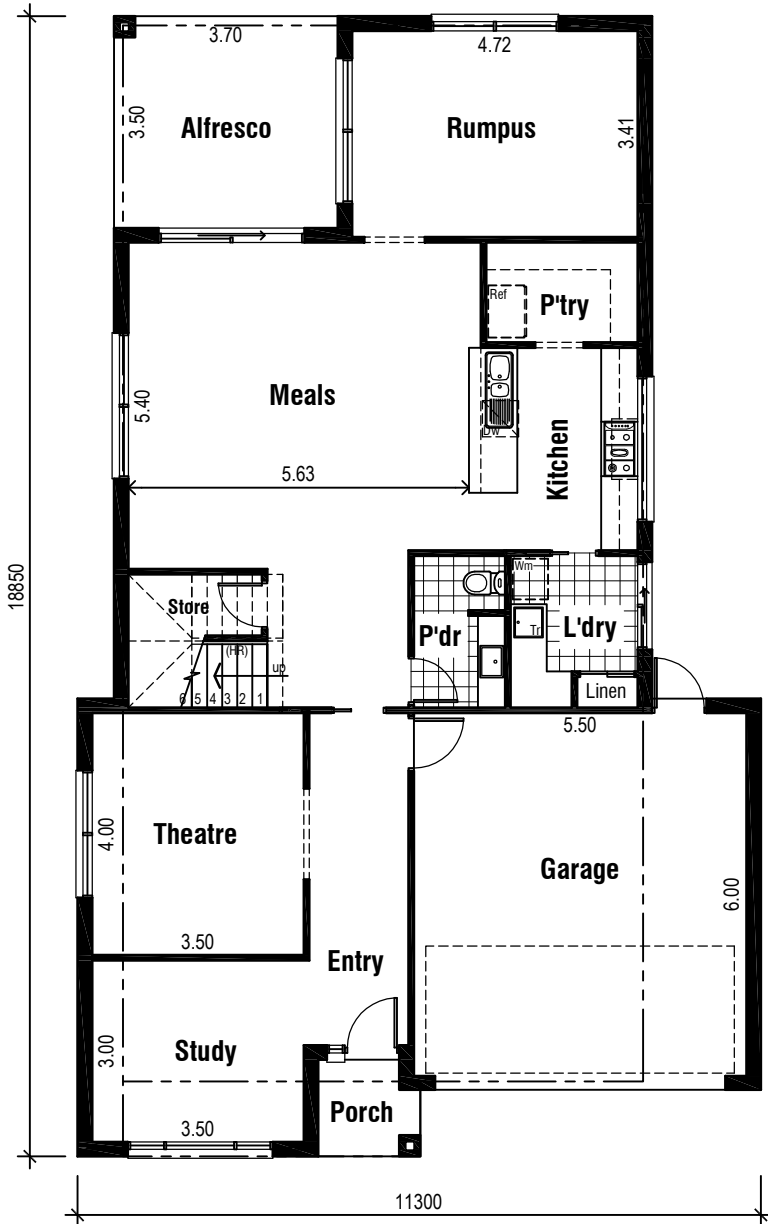


Front Elevation

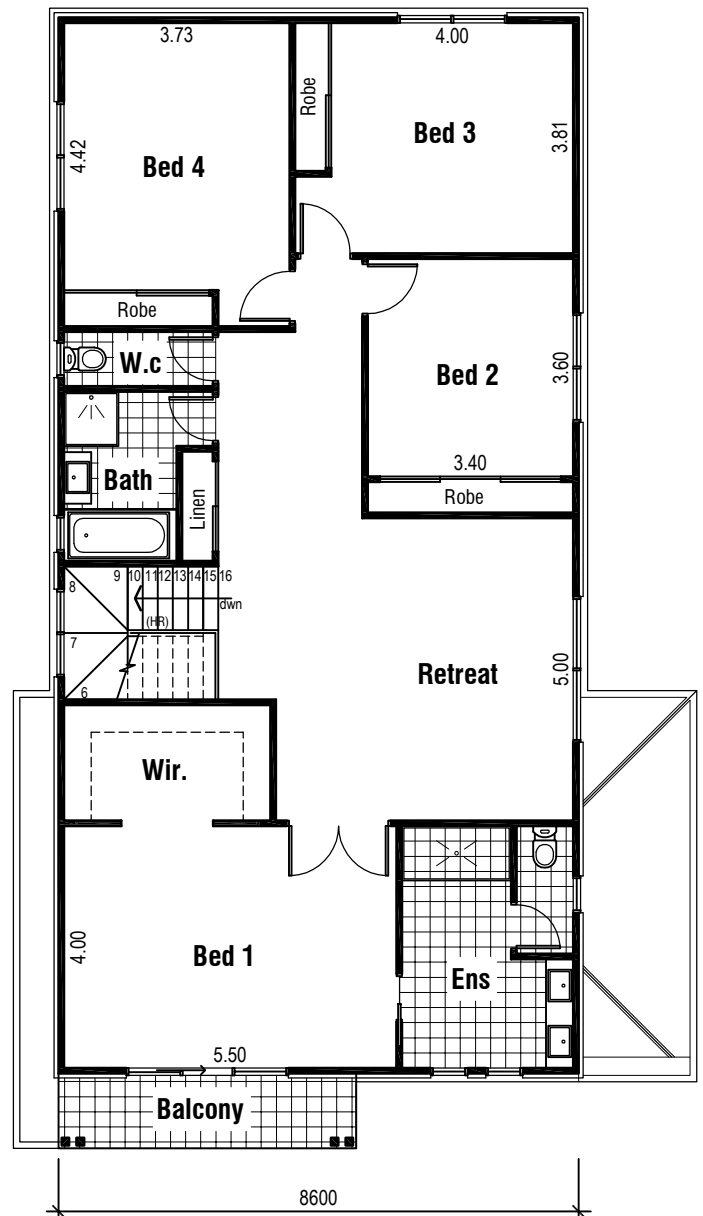
### Areas Analysis :

Ground Floor :	127.95 m2	13.77 sqs
First Floor :	150.16 m2	16.16 sqs
Garage :	36.31 m2	
Porch :	2.53 m2	
Alfresco :	12.95 m2	
Balcony :	6.10 m2	
<b>Total :</b>	<b>336.00 m2</b>	<b>36.17 sqs</b>

Suits 12.50 M  
Min. Block



Ground Floor Plan



First Floor Plan