

ADELAIDE 32



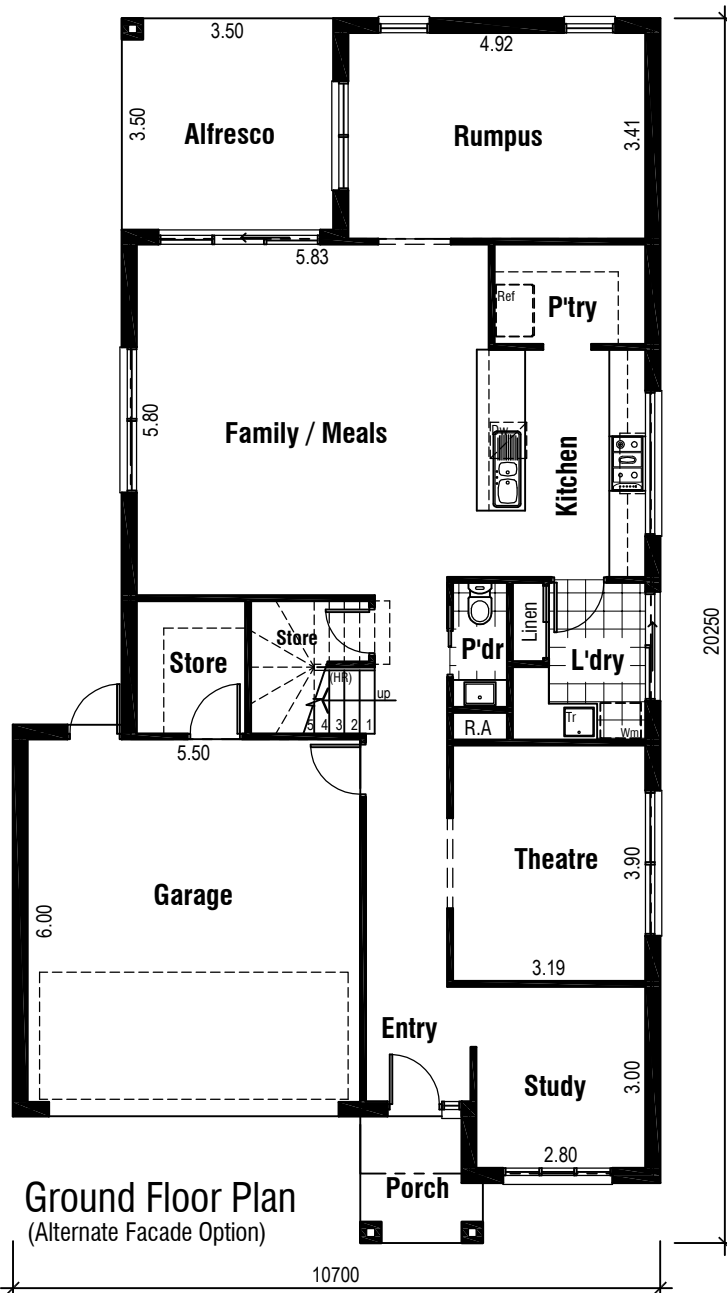
Front Elevation

Areas Analysis :

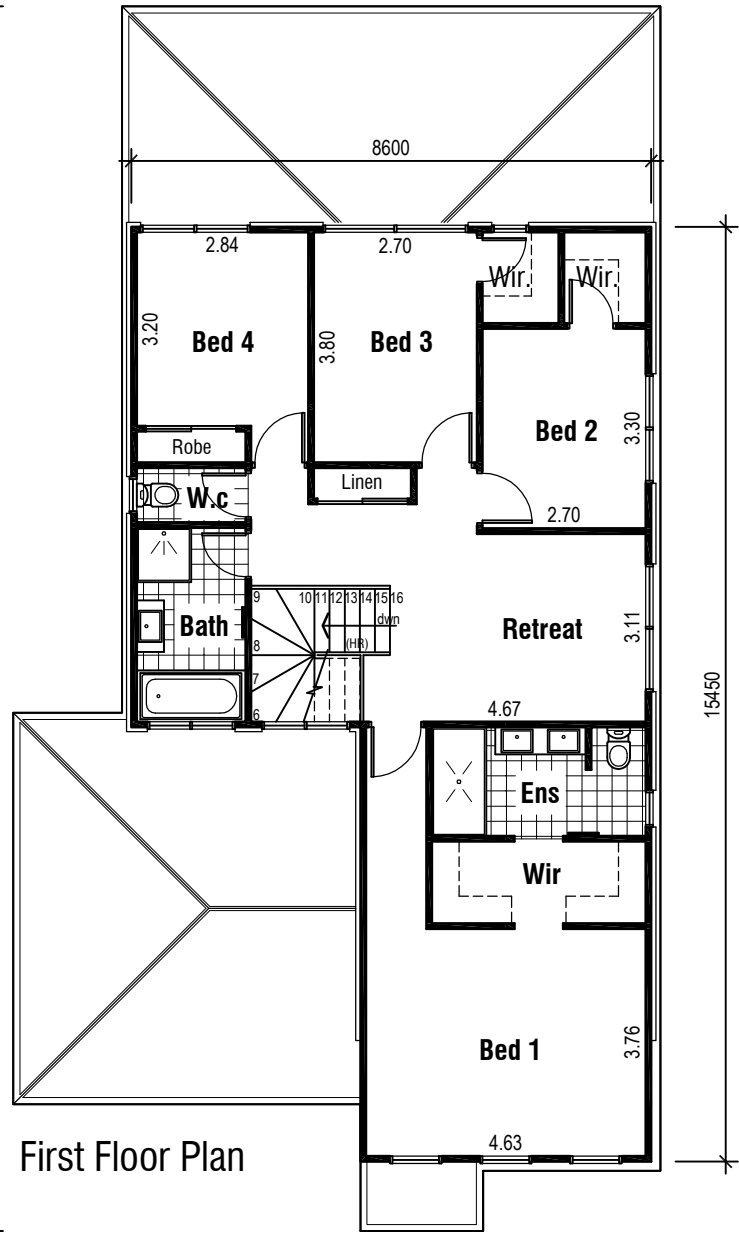
Ground Floor :	127.42 m2	13.72 sqs
First Floor :	105.66 m2	11.37 sqs
Garage :	36.19 m2	
Porch :	3.88 m2	
Alfresco :	12.25 m2	

Total : 285.40 m2 30.72 sqs

Suits 12.50 M
Min. Block

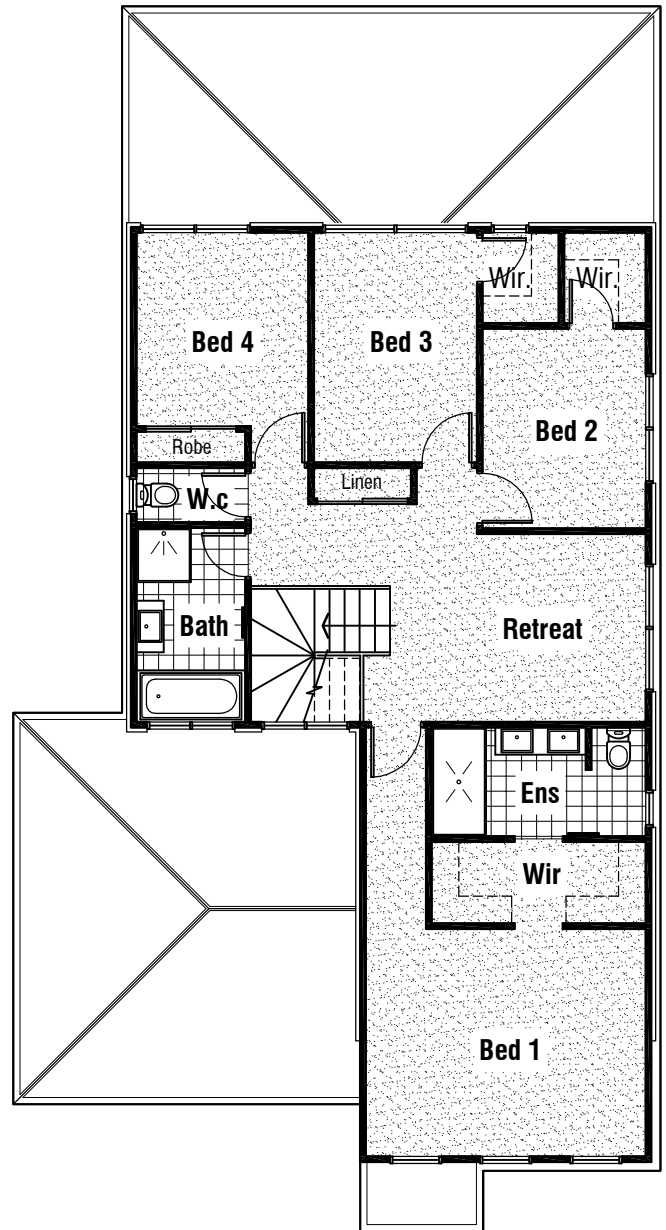
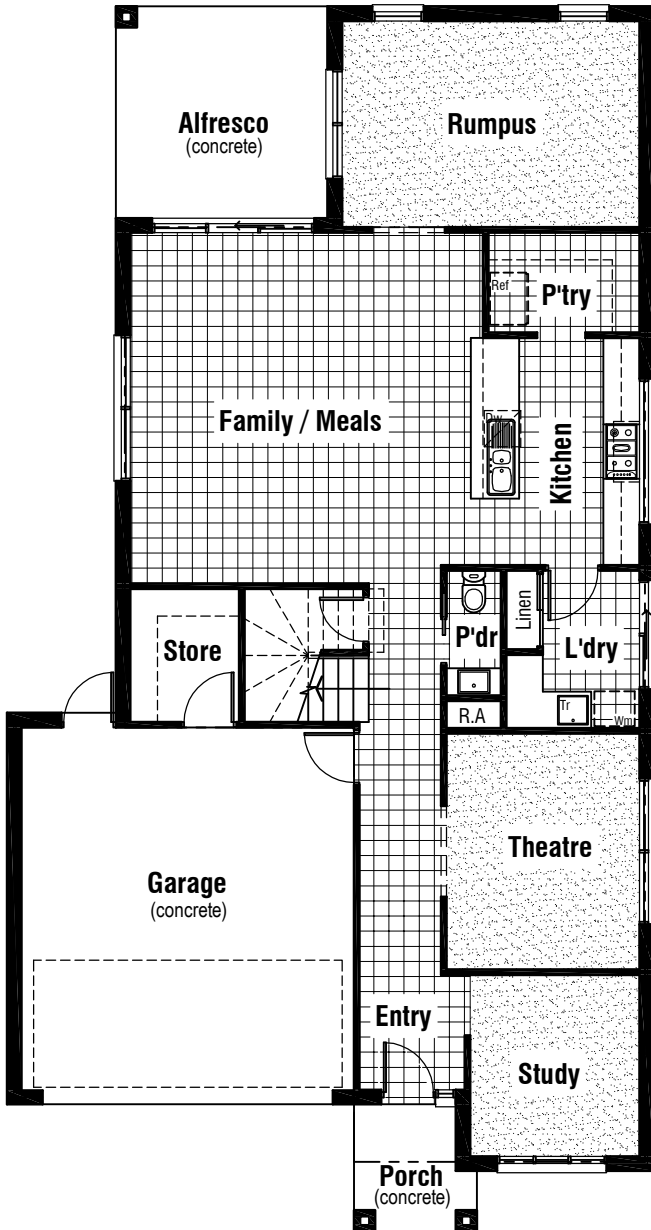


Ground Floor Plan
(Alternate Facade Option)



First Floor Plan

ADELAIDE 32



Floor Coverings Plan



Ceramic Tiles





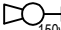







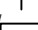
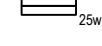


Carpet Areas

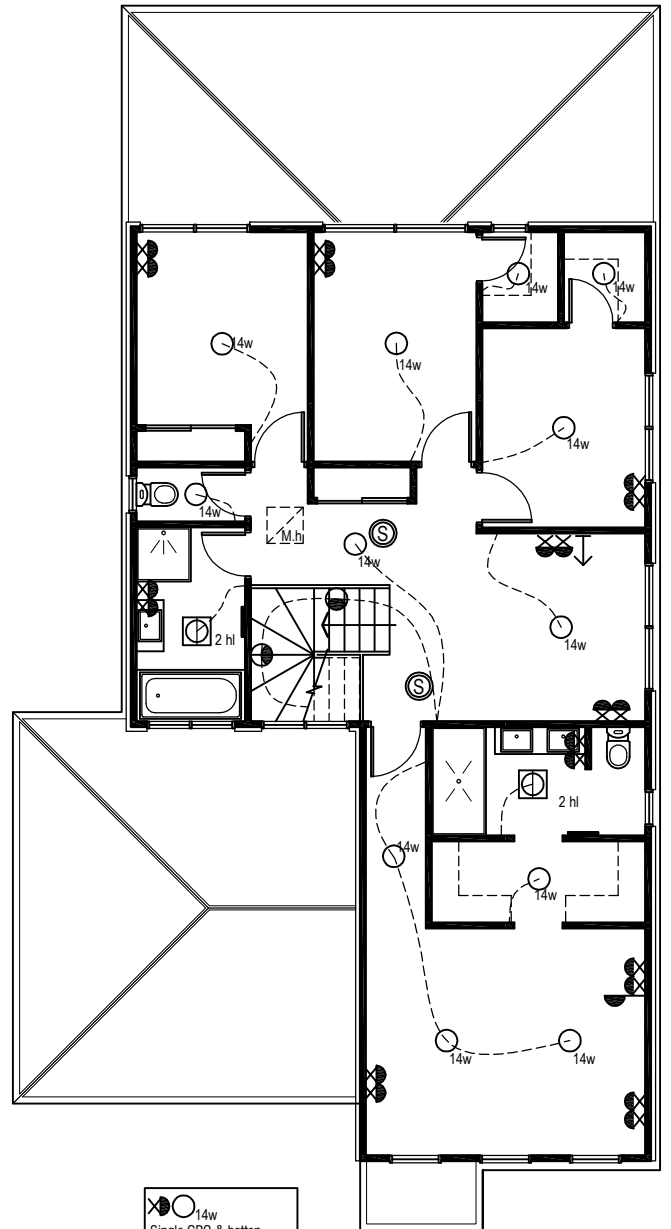
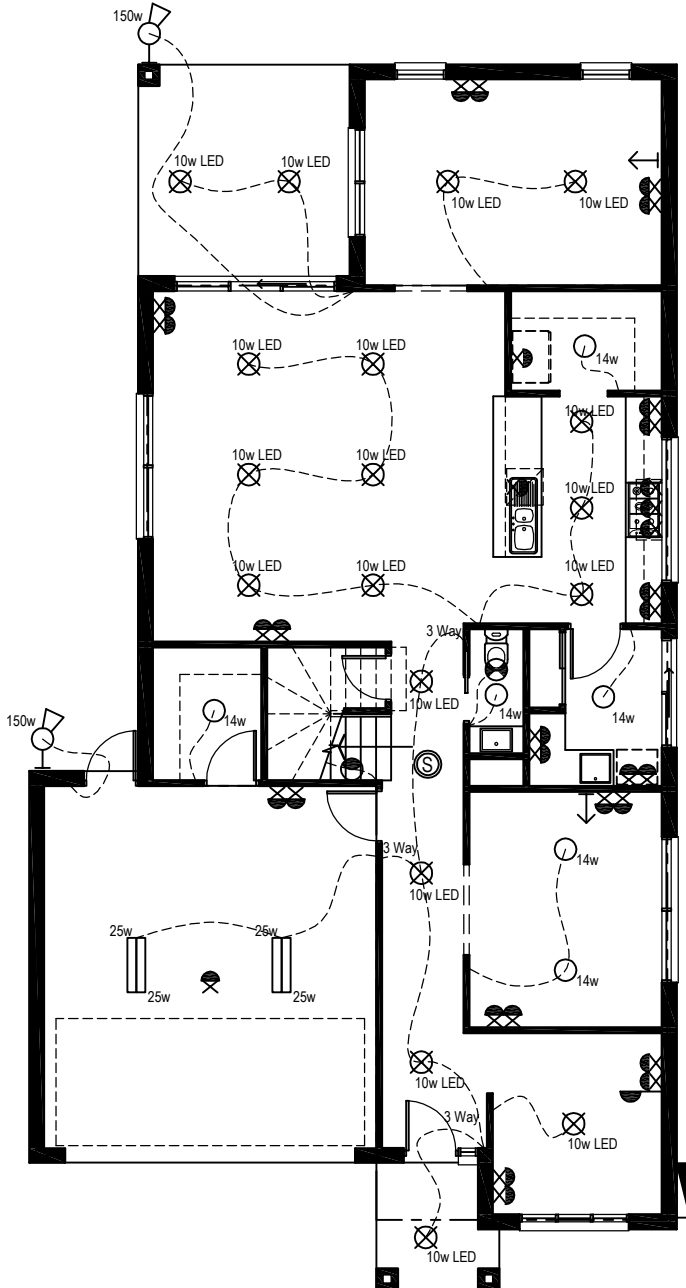



ADELAIDE 32

Electrical Legend

-  Smoke Alarm
-  Electrical meter box
-  Ceiling mounted Oyster fitting with 14 watt globe
-  Ceiling mounted downlight 10 watt L.E.D Globe
-  Wall mounted external flood light with 150 watt globe
-  Wall mounted light outlet
-  3 in 1 - Exhaust Fan with 'draft stopper', Light & 2 x Heat globes
-  Weatherproof External Double GPO
-  Double GPO
-  Single GPO
-  Exhaust Fan - with 'draft stopper'
-  TV point
-  Phone point
-  Ceiling mounted double fluro light with 25 watt globe

Wattage Allowance	
Internal of dwelling - (Class 1)	
Proposed total wattage of light fittings:	484.00 w
Max allowable wattage:	1165.40 w
Internal of garage - (Class 10)	
Proposed total wattage of light fittings:	100.00 w
Max allowable wattage:	108.57 w
Porch, Alfresco, Balconies etc.. - (Class 1)	
Proposed total wattage of light fittings:	30.00 w
Max allowable wattage:	64.52 w



 14w
Single GPO & batten
light for heating/cooling
unit within roof space

Proposed Electrical Plan

ADELAIDE 32



Front Elevation

Areas Analysis :

Ground Floor :	127.42 m2	13.72 sqs
First Floor :	105.66 m2	11.37 sqs
Garage :	36.19 m2	
Porch :	3.88 m2	
Alfresco :	12.25 m2	

Total : 285.40 m2 30.72 sqs

Suits 12.50 M
Min. Block

