

HARPLEY OSBORNE 26

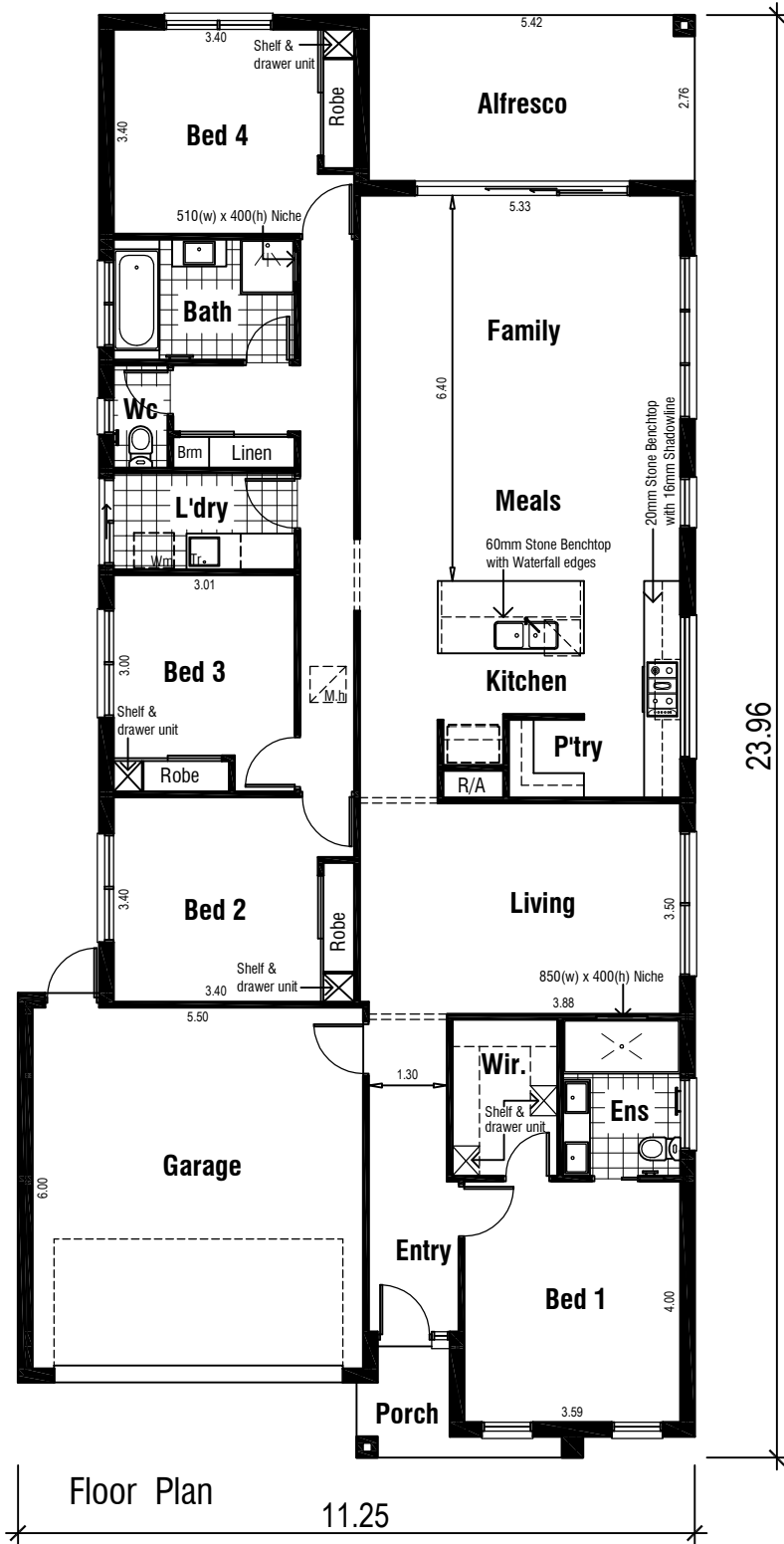


AS DISPLAYED AT
BILLEROY WAY

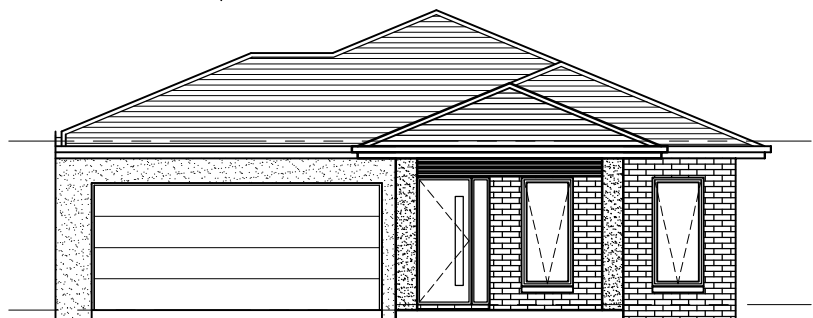
MEADOWS FACADE
ON DISPLAY

Areas Analysis :

Dwelling :	185.44 m2	19.96 sqs
Garage :	36.23 m2	
Porch :	3.31 m2	
Alfresco :	14.96 m2	
Total :	239.94 m2	25.83 sqs

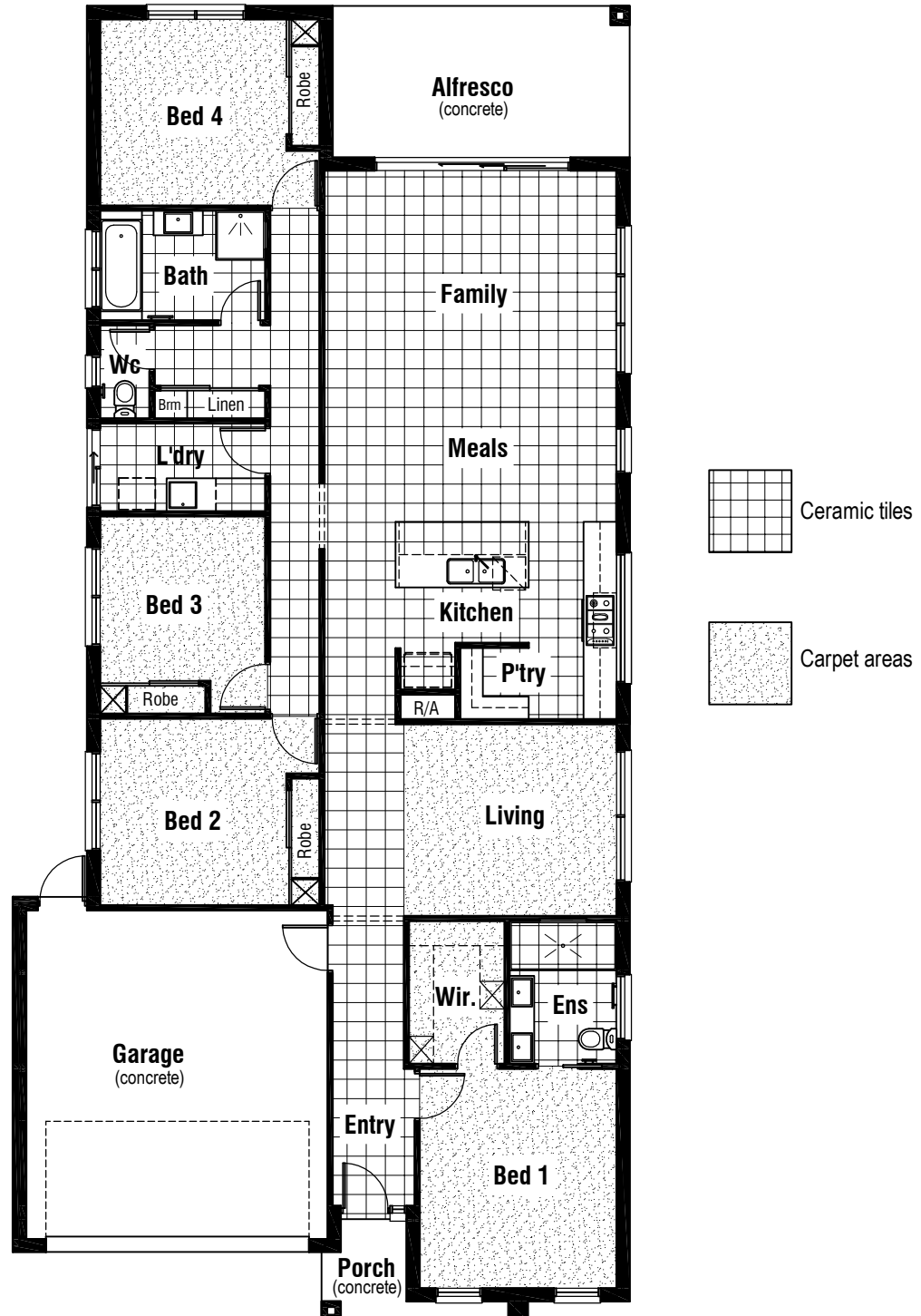


Suits 12.50 M
Min. Block



Front Elevation

HARPLEY OSBORNE 26



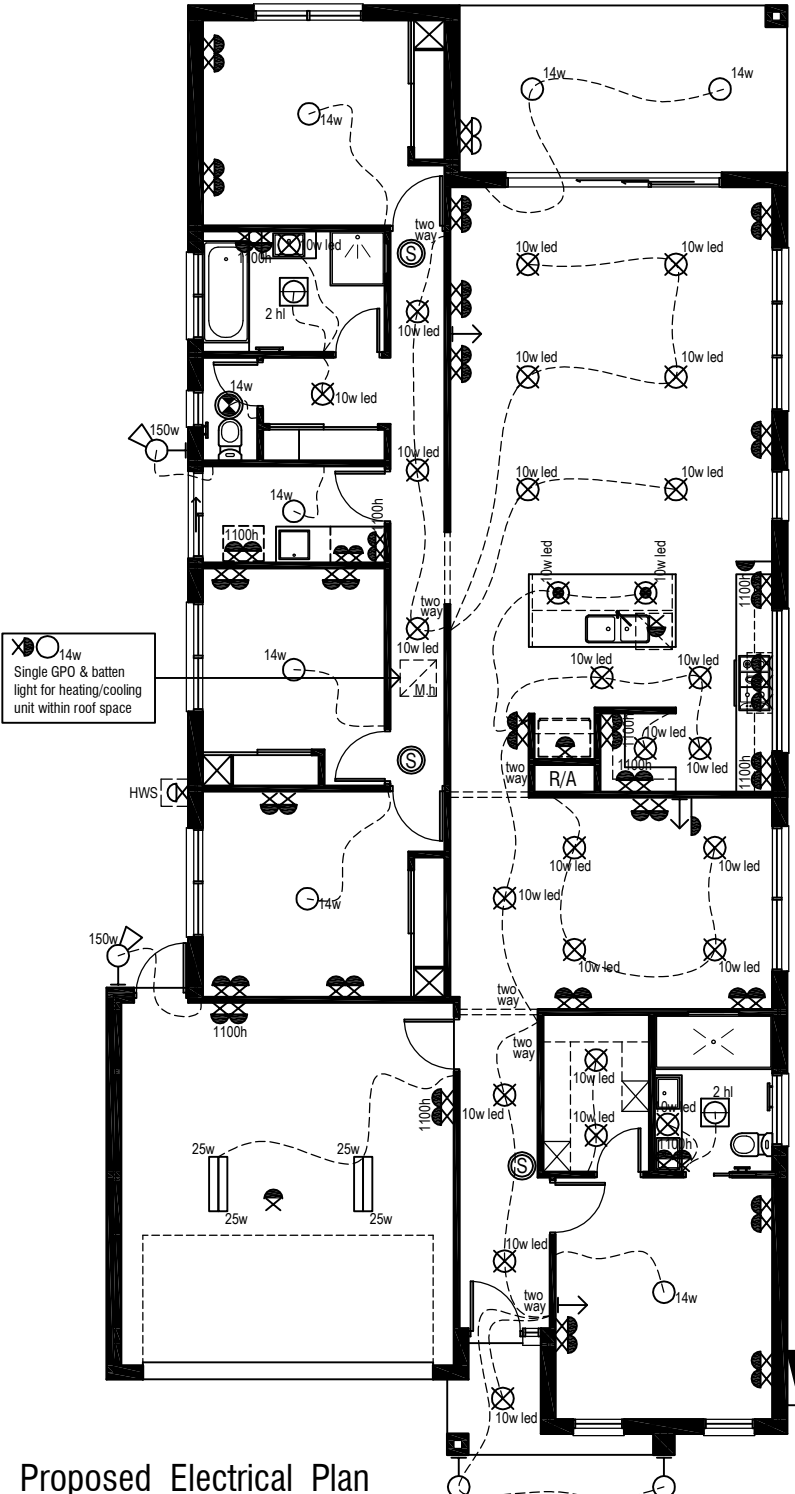
Floor Coverings Plan



HARPLEY OSBORNE 26

Electrical Legend

- Smoke Alarm
- Electrical meter box
- Ceiling mounted Oyster fitting with 14 watt globe
- Ceiling mounted 10 watt led pendant light
- Ceiling mounted downlight 10 watt L.E.D Globe
- Wall mounted external flood light with 150 watt globe
- Wall mounted light outlet
- 3 in 1 - Exhaust Fan with 'draft stopper', Light & 2 x Heat globes
- Weatherproof External Double GPO
- Double GPO
- Single GPO
- TV point
- Phone point
- Ceiling mounted double fluo light with 25 watt globe



Wattage Allowance

Internal of dwelling - (Class 1)	
Proposed total wattage of light fittings:	368.00 w
Max allowable wattage:	927.20 w
Internal of garage - (Class 10)	
Proposed total wattage of light fittings:	100.00 w
Max allowable wattage:	108.69 w
Porch, Alfresco, Balconies etc.. - (Class 1)	
Proposed total wattage of light fittings:	38.00 w
Max allowable wattage:	73.08 w

Proposed Electrical Plan

HARPLEY OSBORNE 26



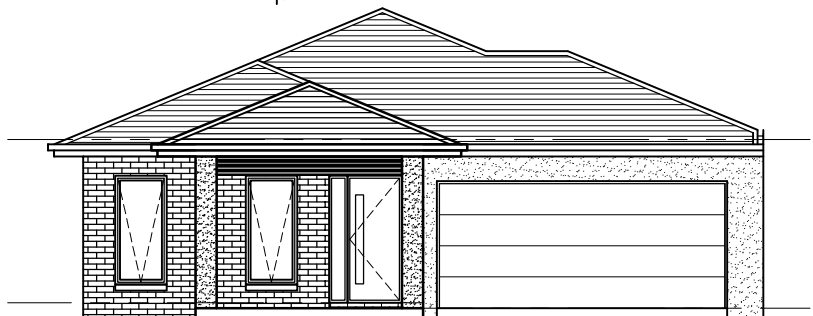
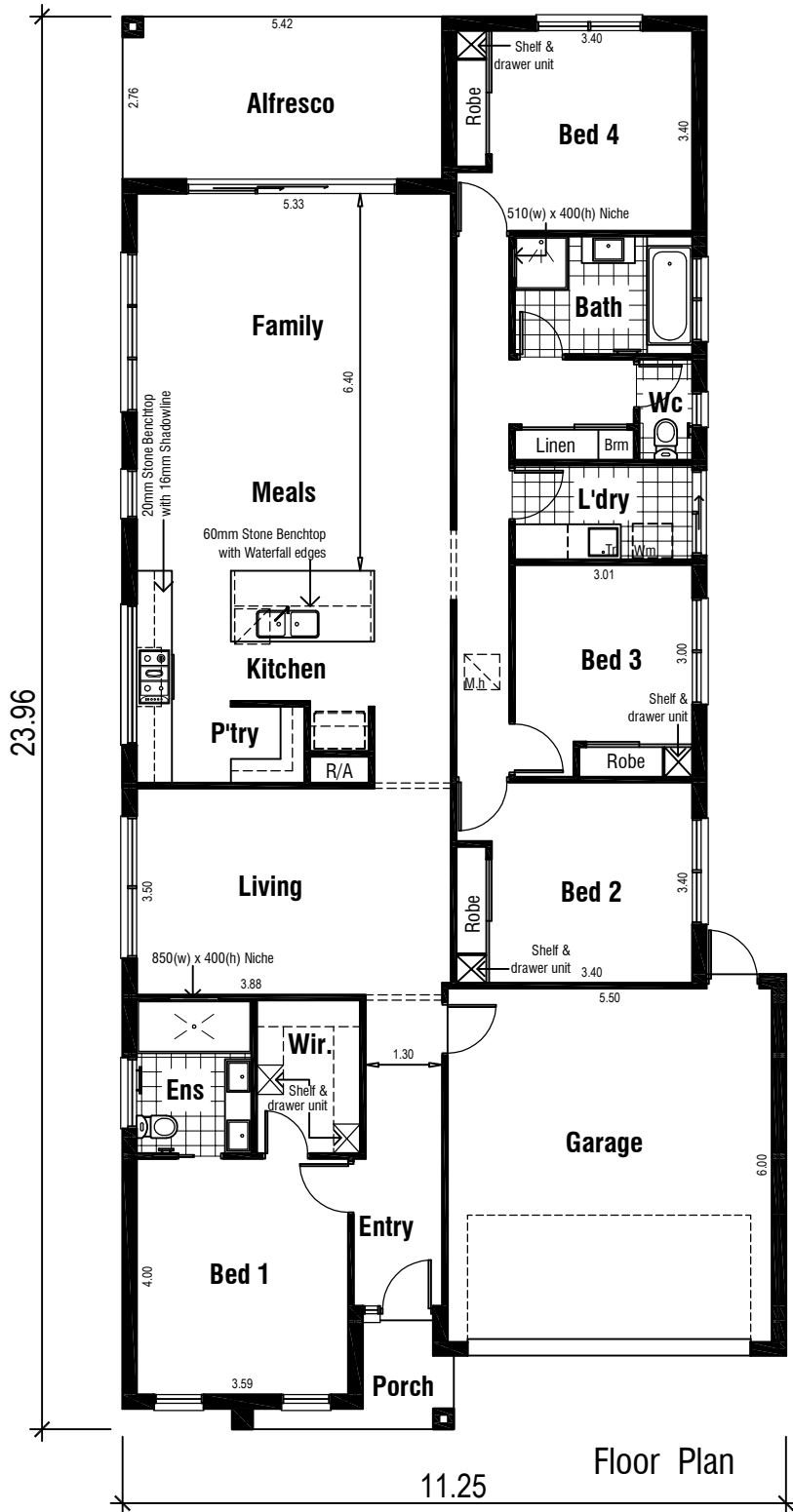
AS DISPLAYED AT
BILLEROY WAY

MEADOWS FACADE
ON DISPLAY

Areas Analysis :

Dwelling :	185.44 m2	19.96 sqs
Garage :	36.23 m2	
Porch :	3.31 m2	
Alfresco :	14.96 m2	
Total :	239.94 m2	25.83 sqs

Suits 12.50 M
Min. Block



Front Elevation