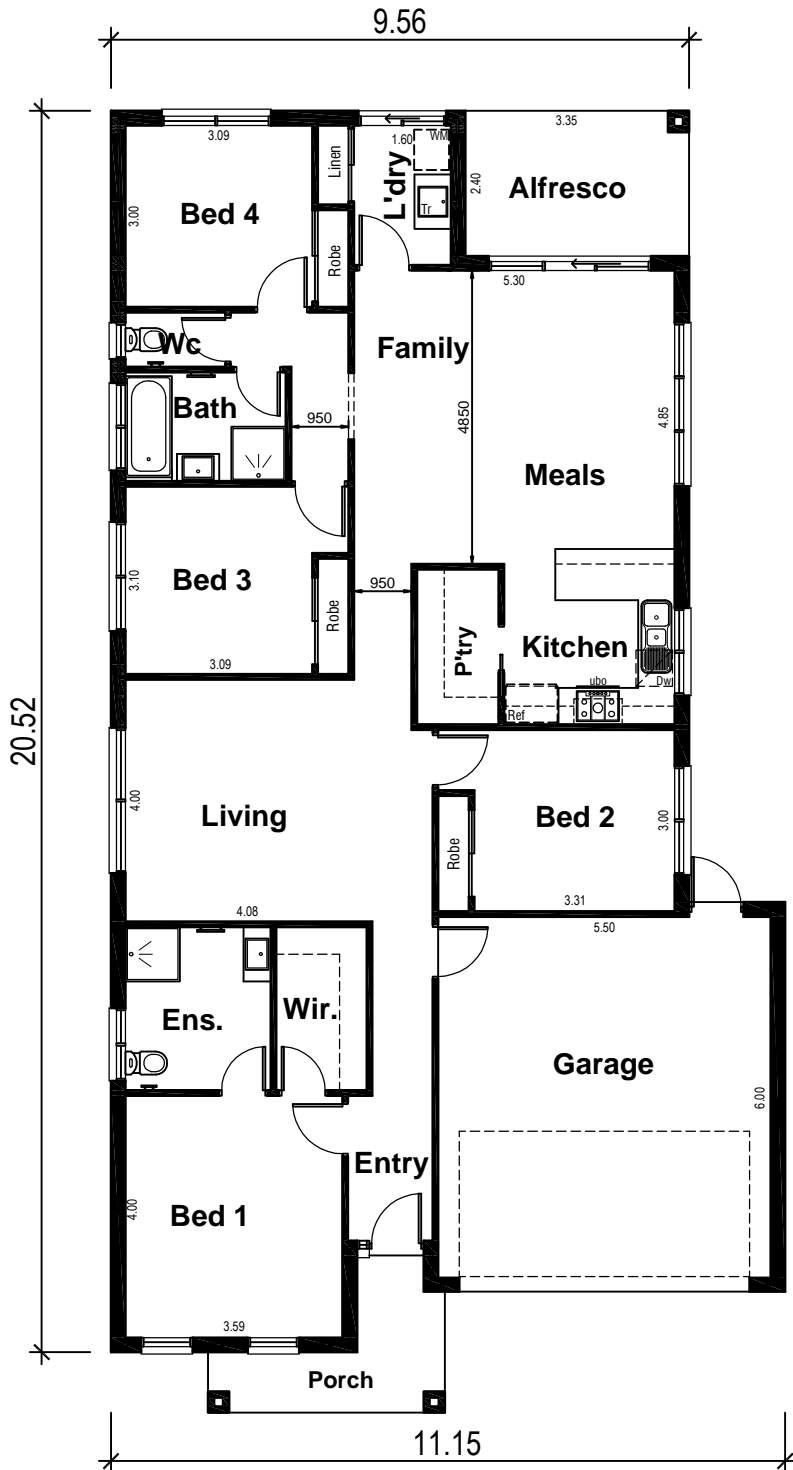


OSBORNE 22



Areas Analysis :

Dwelling :	155.27 m2
Garage :	36.11 m2
Alfresco :	8.88 m2
Porch :	6.03 m2
Total :	206.29 m2 22.21 sqs

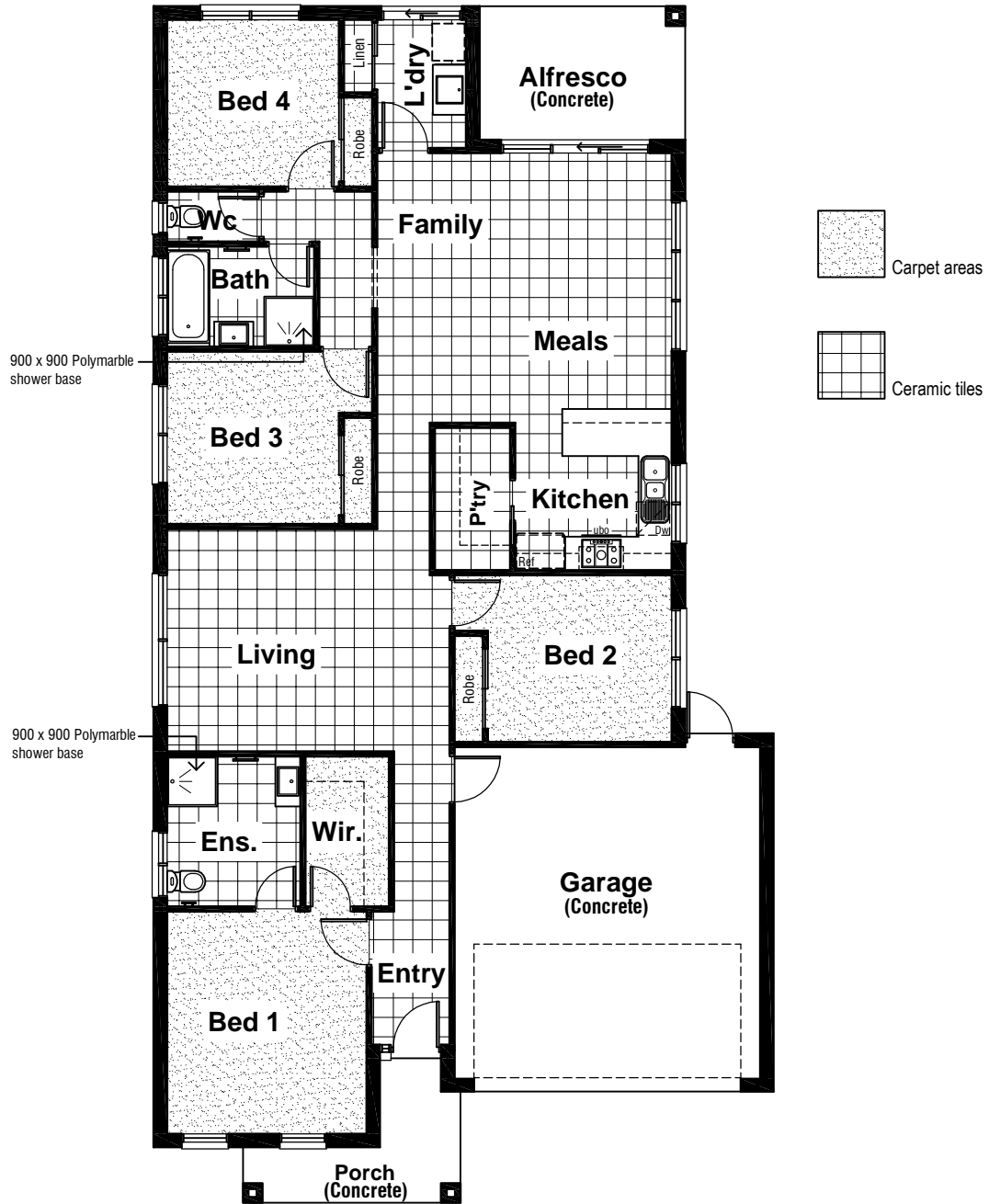
Suits 12.50 M
Min. Block

Floor Plan



Front Elevation

OSBORNE 22



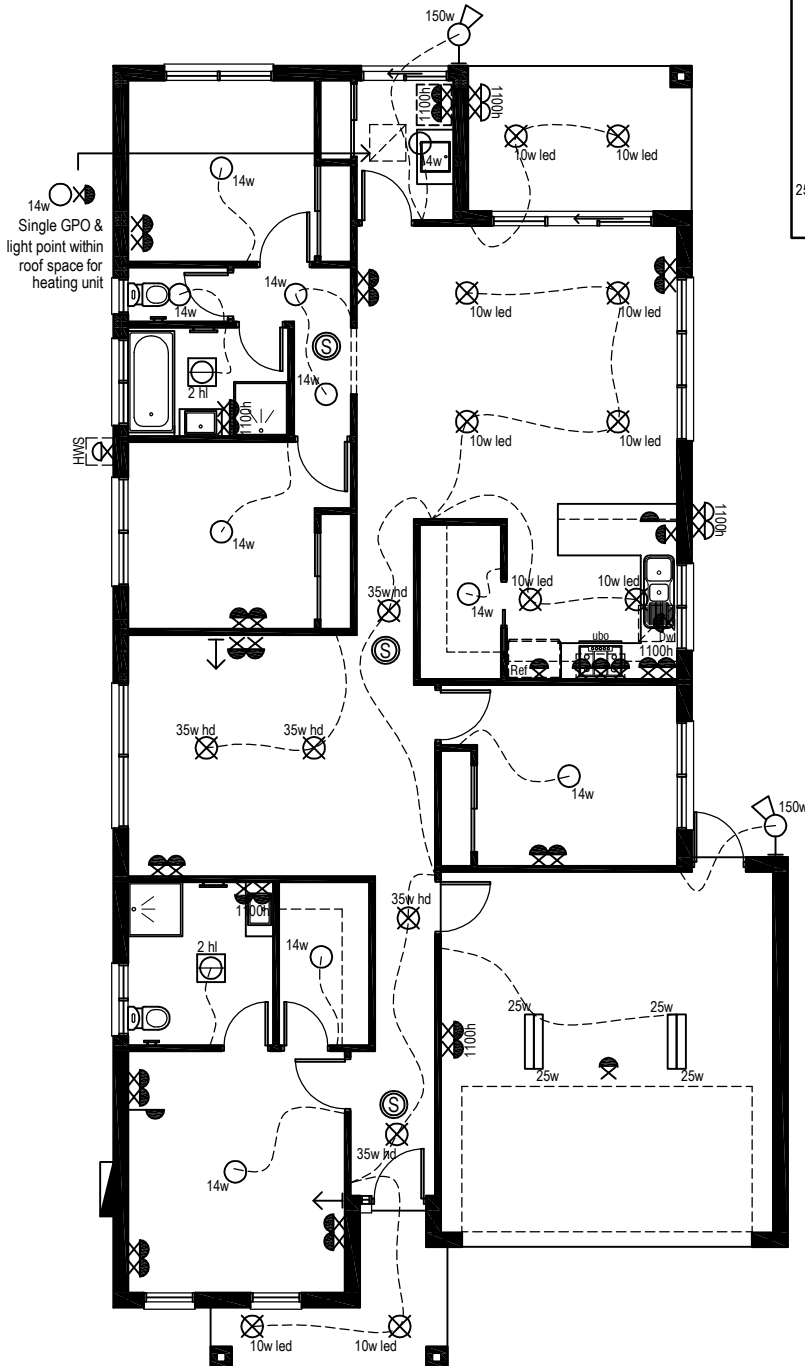
Floor Coverings Plan



OSBORNE 22

Electrical Legend

- Smoke Alarm
- Electrical meter box
- Ceiling mounted Oyster fitting with 14 watt globe
- Ceiling mounted 70mm downlight 35 watt Halogen light
- Ceiling mounted downlight 10 watt L.E.D Globe
- Wall mounted external flood light with 150 watt globe
- 3 in 1 - Exhaust Fan with 'draft stopper', Light & 2 x Heat globes
- Weatherproof External Double GPO
- Double GPO
- Single GPO
- TV point
- Phone point
- Ceiling mounted double fluoro light with 25 watt globe

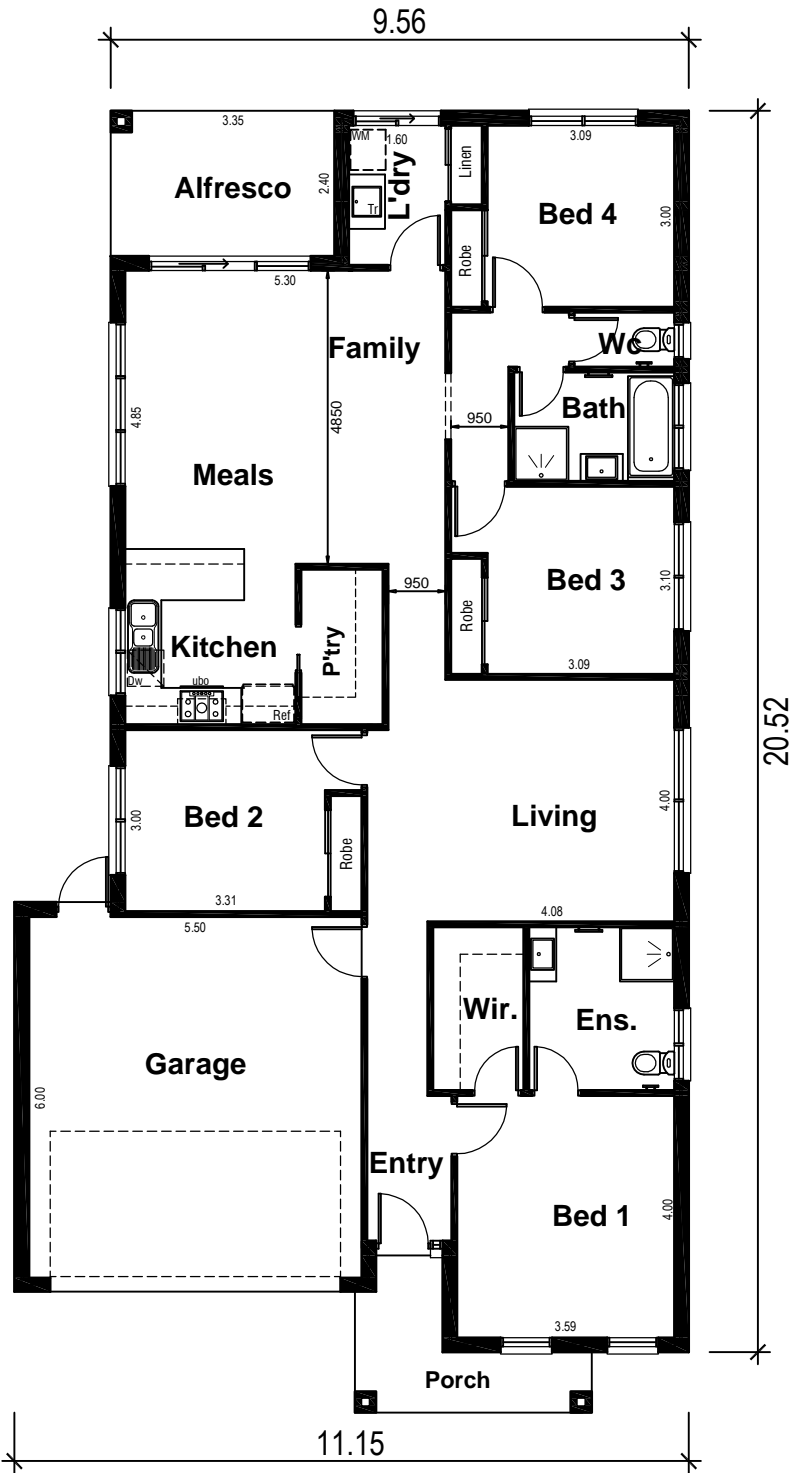


Wattage Allowance

Internal of dwelling - (Class 1)	
Proposed total wattage of light fittings:	389.00 w
Max allowable wattage:	776.35 w
Internal of garage - (Class 10)	
Proposed total wattage of light fittings:	100.00 w
Max allowable wattage:	108.33 w
Porch, Alfresco, Balconies etc.. - (Class 1)	
Proposed total wattage of light fittings:	40.00 w
Max allowable wattage:	59.64 w

Proposed First Floor
Electrical Plan

OSBORNE 22



Areas Analysis :

Dwelling :	155.27 m ²
Garage :	36.11 m ²
Alfresco :	8.88 m ²
Porch :	6.03 m ²
Total :	206.29 m² 22.21 sqs

Suits 12.50 M
Min. Block

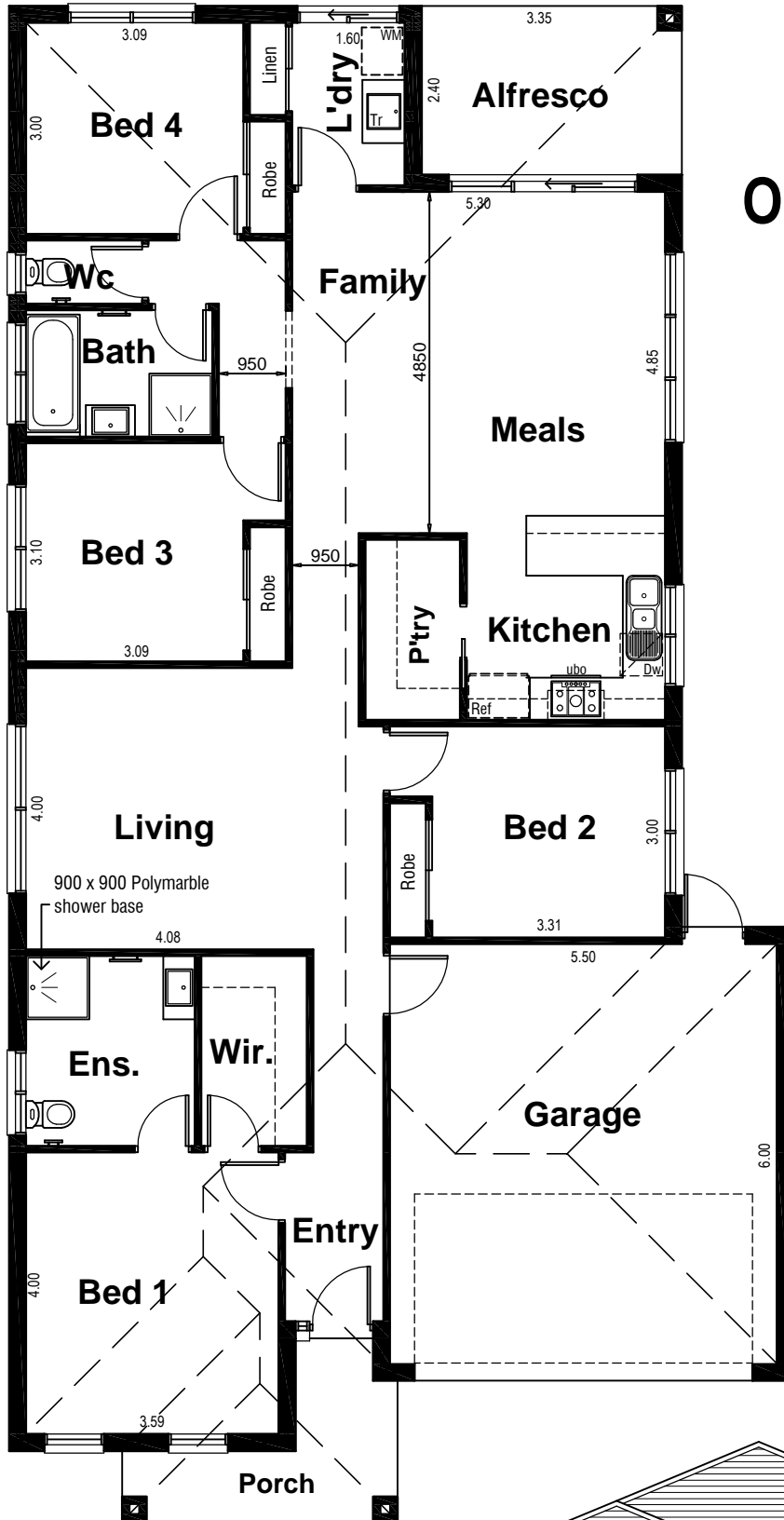
Floor Plan



Front Elevation



OSBORNE 22



Areas Analysis :

Dwelling :	155.27 m2
Garage :	36.11 m2
Alfresco :	8.88 m2
Porch :	6.03 m2
Total :	206.29 m2 22.21 sqs

Suits 12.50 M
Min. Block

Floor Plan
Scale 1:100



Front Elevation
Scale 1:100