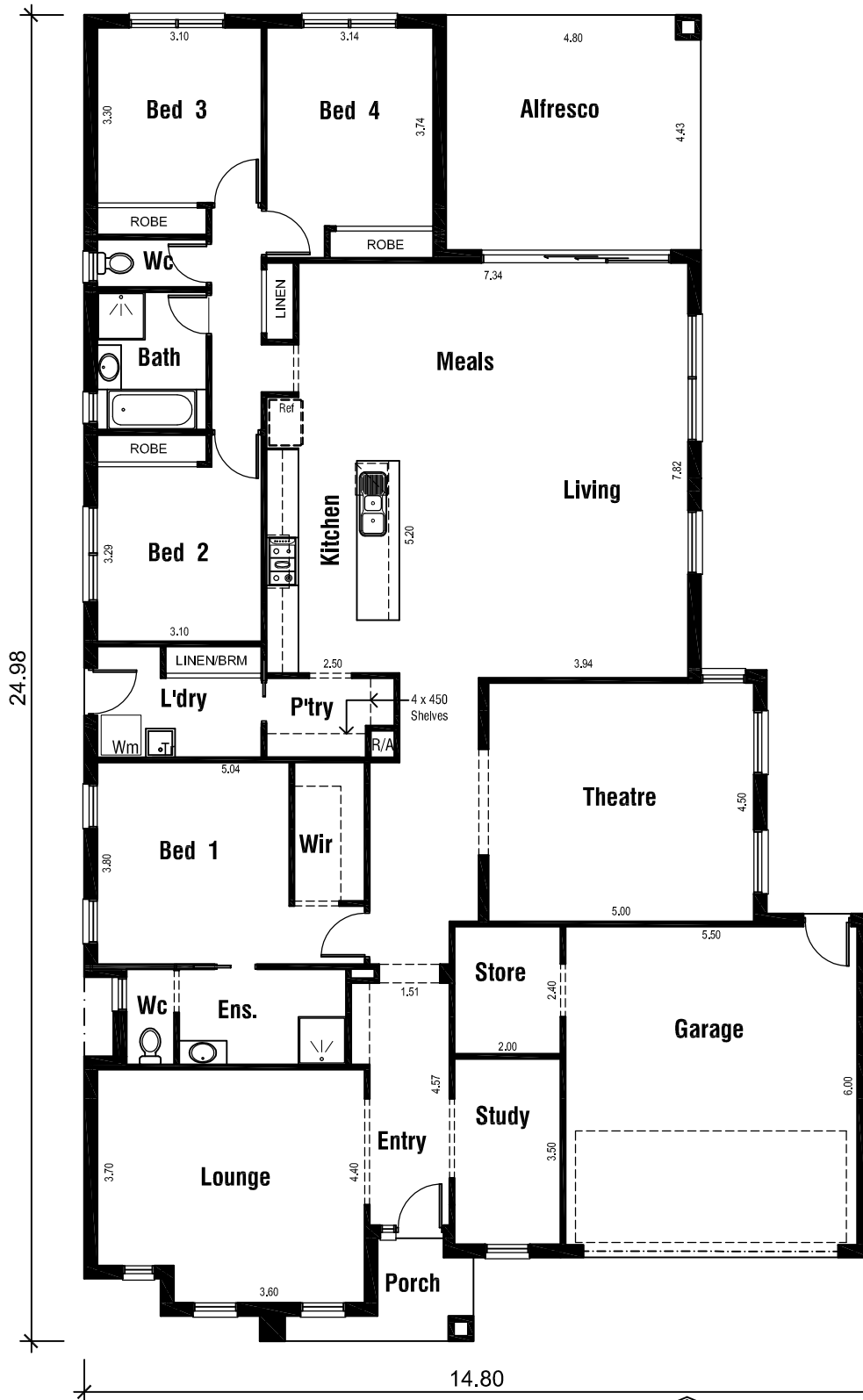


YARRA 33

SERIES II



Areas Analysis :

Dwelling :	245.07 m2	26.38 sq
Garage :	36.29 m2	
Alfresco :	21.26 m2	
Porch :	4.15 m2	
Total :	306.77 m2	33.02 sq

Suits 16.0 M
Min. Block

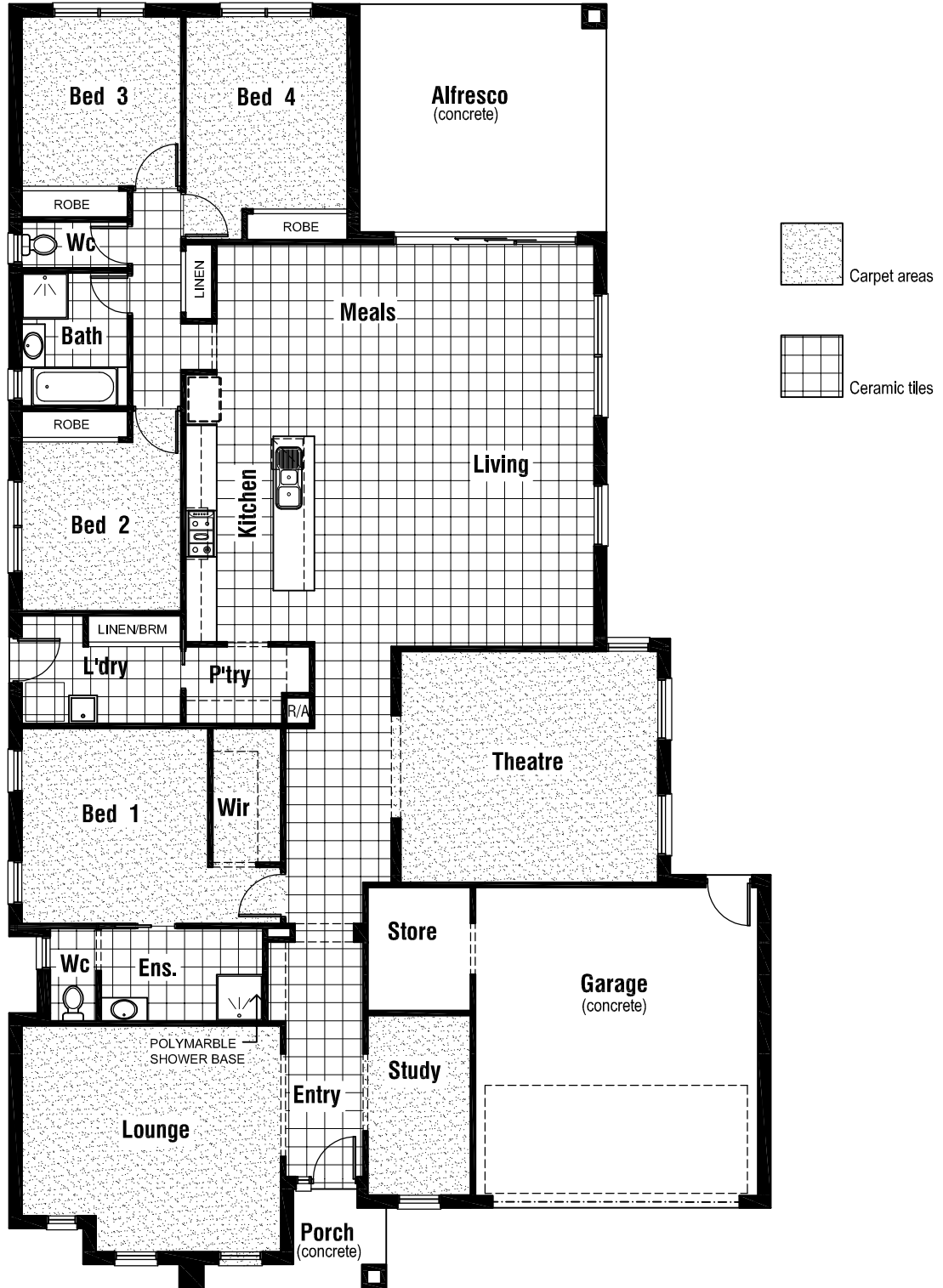
Floor Plan



Front Elevation

YARRA 33

SERIES II



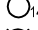
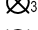
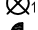








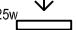


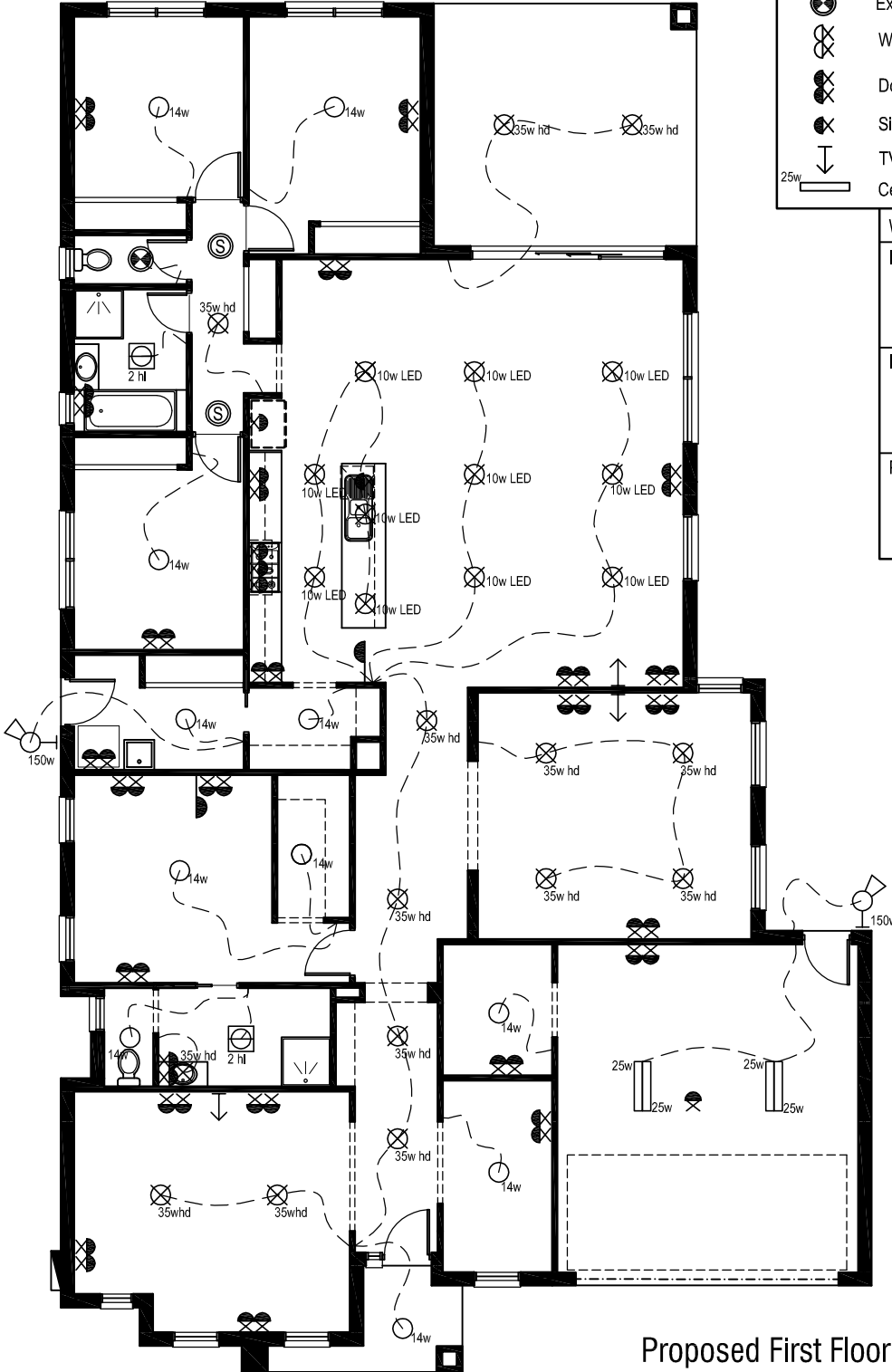
Floor Coverings Plan



YARRA 33 SERIES II

Electrical Legend

-  Smoke Alarm
-  Electrical meter box
-  Ceiling mounted Oyster fitting with 14 watt globe
-  Ceiling mounted 35 watt halogen light
-  Ceiling mounted 10 watt LED downlight
-  Phone Point
-  Wall mounted external flood light with 150 watt globe
-  3 in 1 - Exhaust Fan with 'draft stopper', Light & 2 x Heat globes
-  Exhaust Fan & Light - with 'draft stopper'
-  Weatherproof External Double GPO
-  Double GPO
-  Single GPO
-  TV point
-  Ceiling mounted fluro light with 25 watt globe



Wattage Allowance	
Internal of dwelling - (Class 1)	
Proposed total wattage of light fittings:	684.00 w
Max allowable wattage:	1225.35 w
Internal of garage - (Class 10)	
Proposed total wattage of light fittings:	114.00 w
Max allowable wattage:	108.87 w
Porch, Alfresco, Balconies etc.. - (Class 1)	
Proposed total wattage of light fittings:	84.00 w
Max allowable wattage:	101.64 w

Proposed First Floor
Electrical Plan

YARRA 33

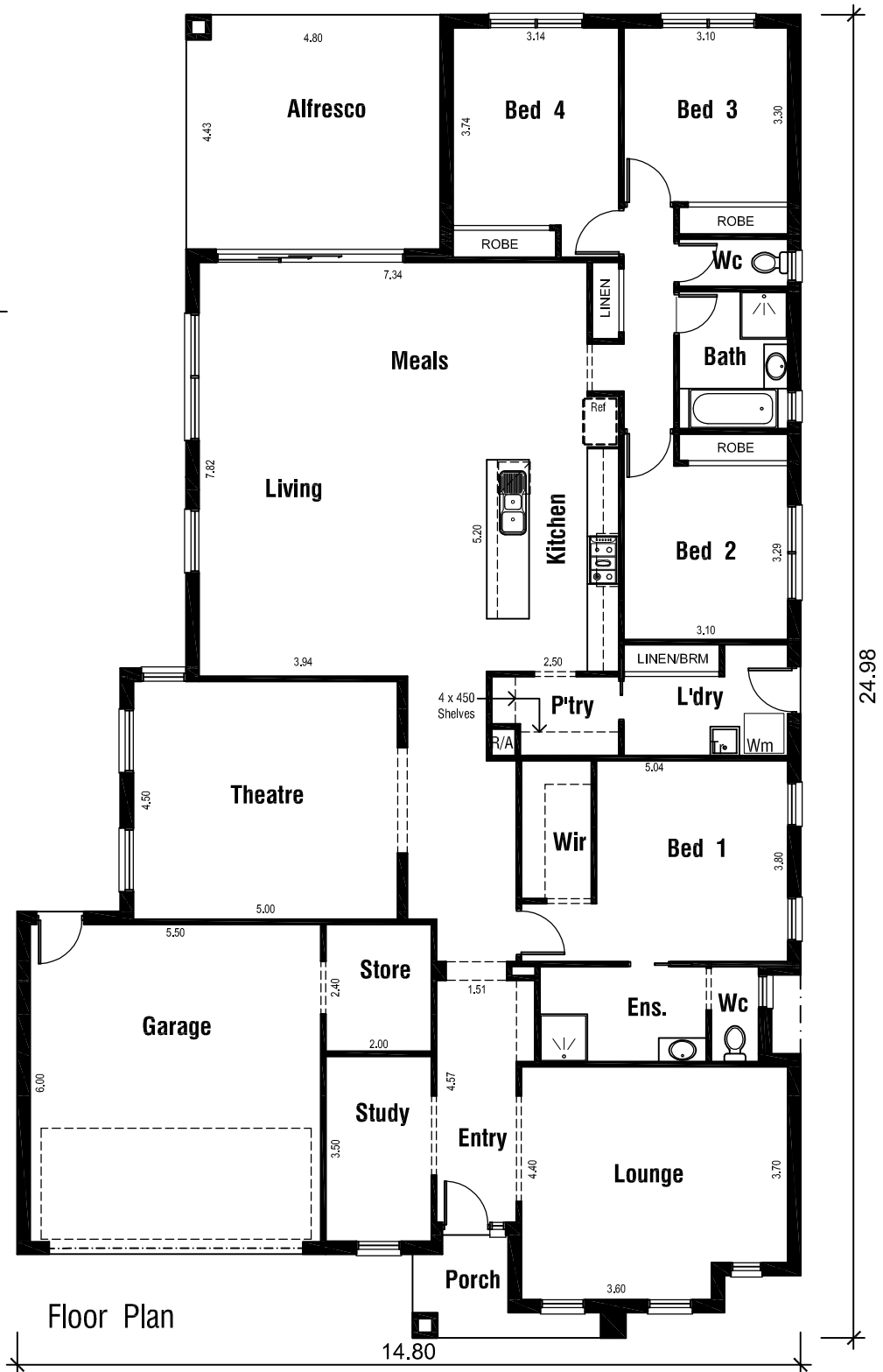
SERIES II



Areas Analysis :

Dwelling :	245.07 m ²	26.38 sq
Garage :	36.29 m ²	
Alfresco :	21.26 m ²	
Porch :	4.15 m ²	
Total :	306.77 m²	33.02 sq

Suits 16.0 M
Min. Block



Front Elevation