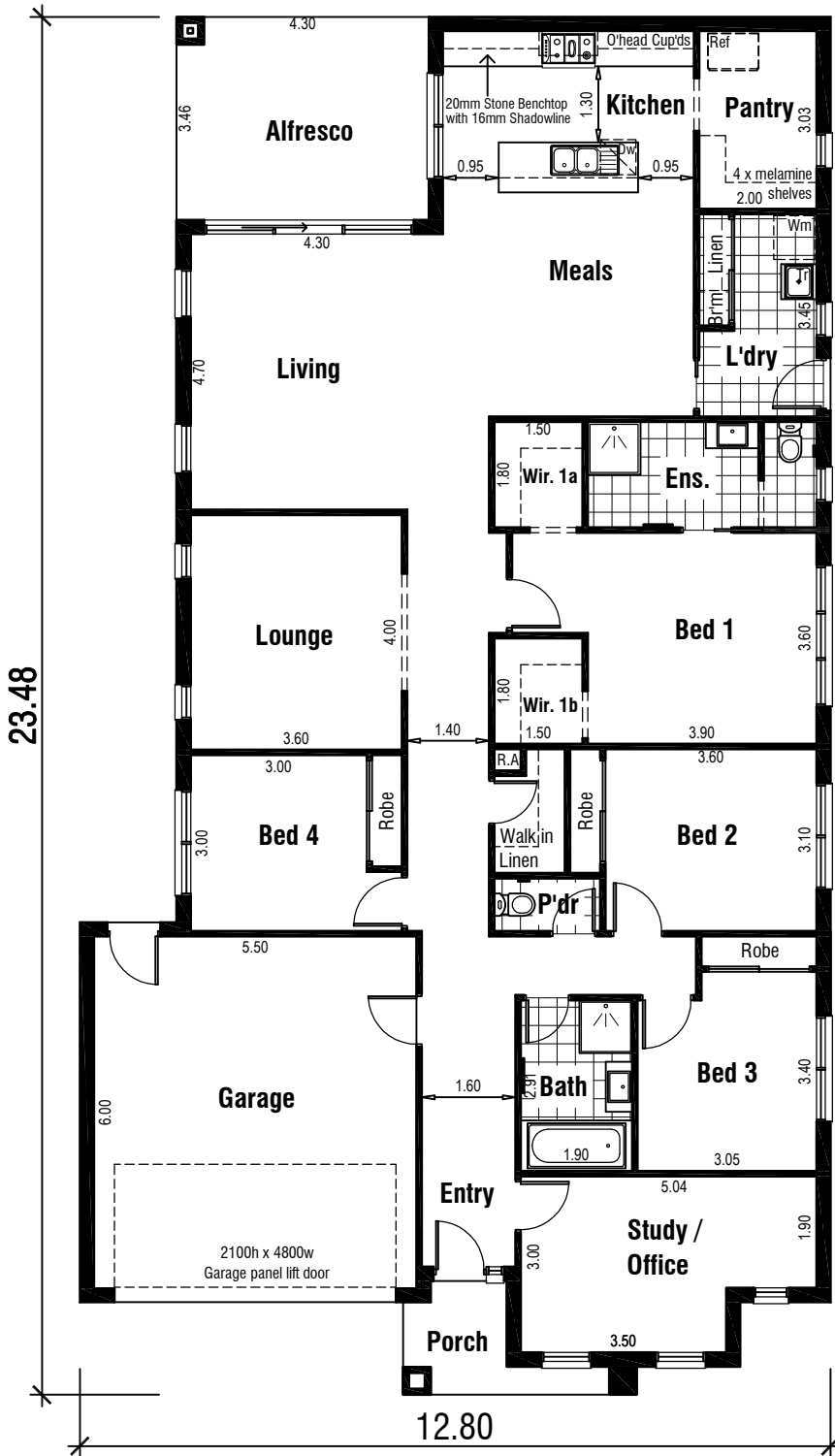


# YARRA 29 MK 2



## Areas Analysis :

Dwelling :	207.88 m <sup>2</sup>	22.38 sqs
Garage :	36.24 m <sup>2</sup>	
Porch :	4.10 m <sup>2</sup>	
Alfresco :	14.88 m <sup>2</sup>	
<b>Total :</b>	<b>263.10 m<sup>2</sup></b>	<b>28.32 sqs</b>

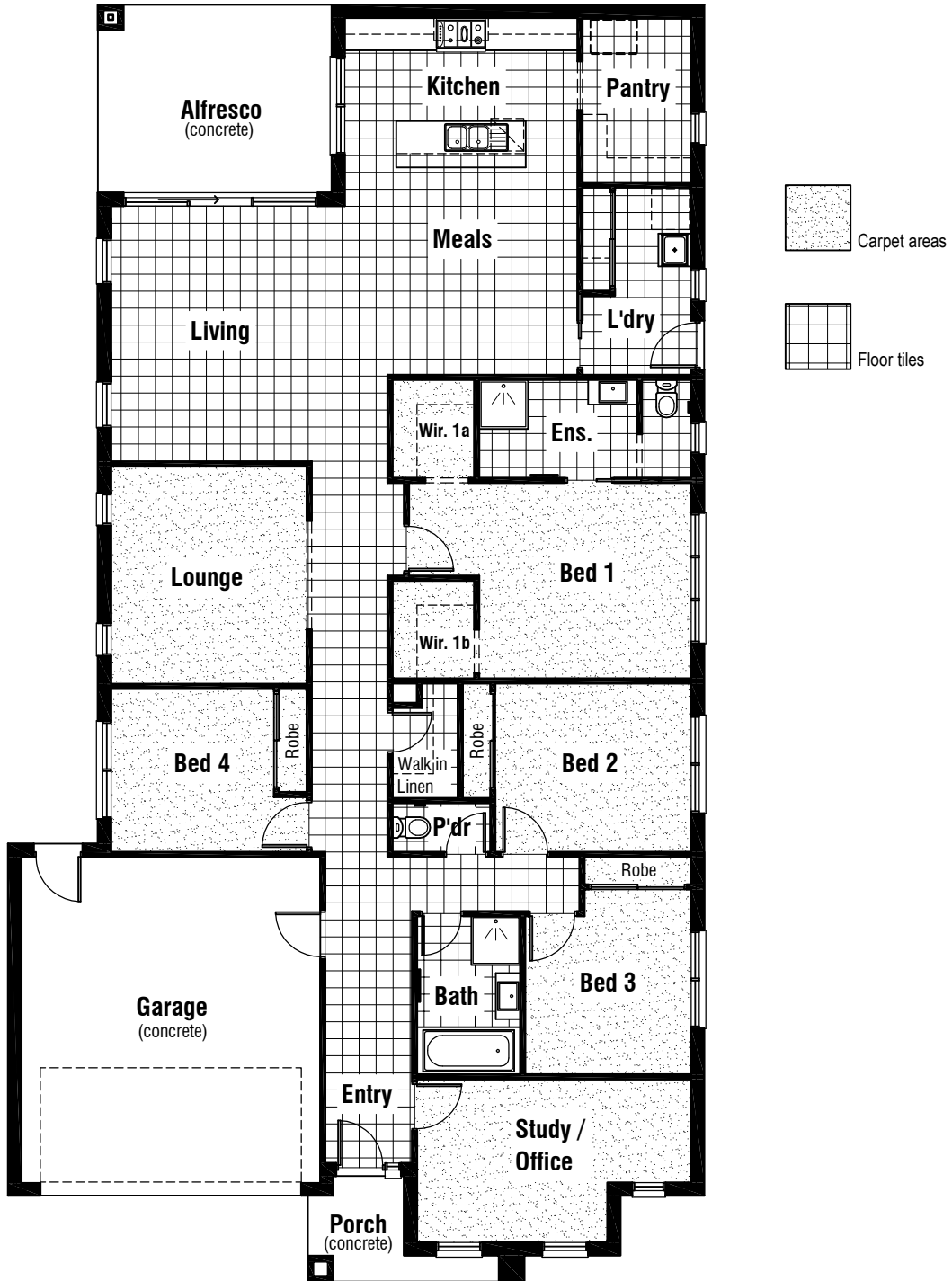
Suits 14(w) x 32(d) M  
Min. Block

Floor Plan



Front Elevation

# YARRA 29 MK 2



Floor Coverings Plan

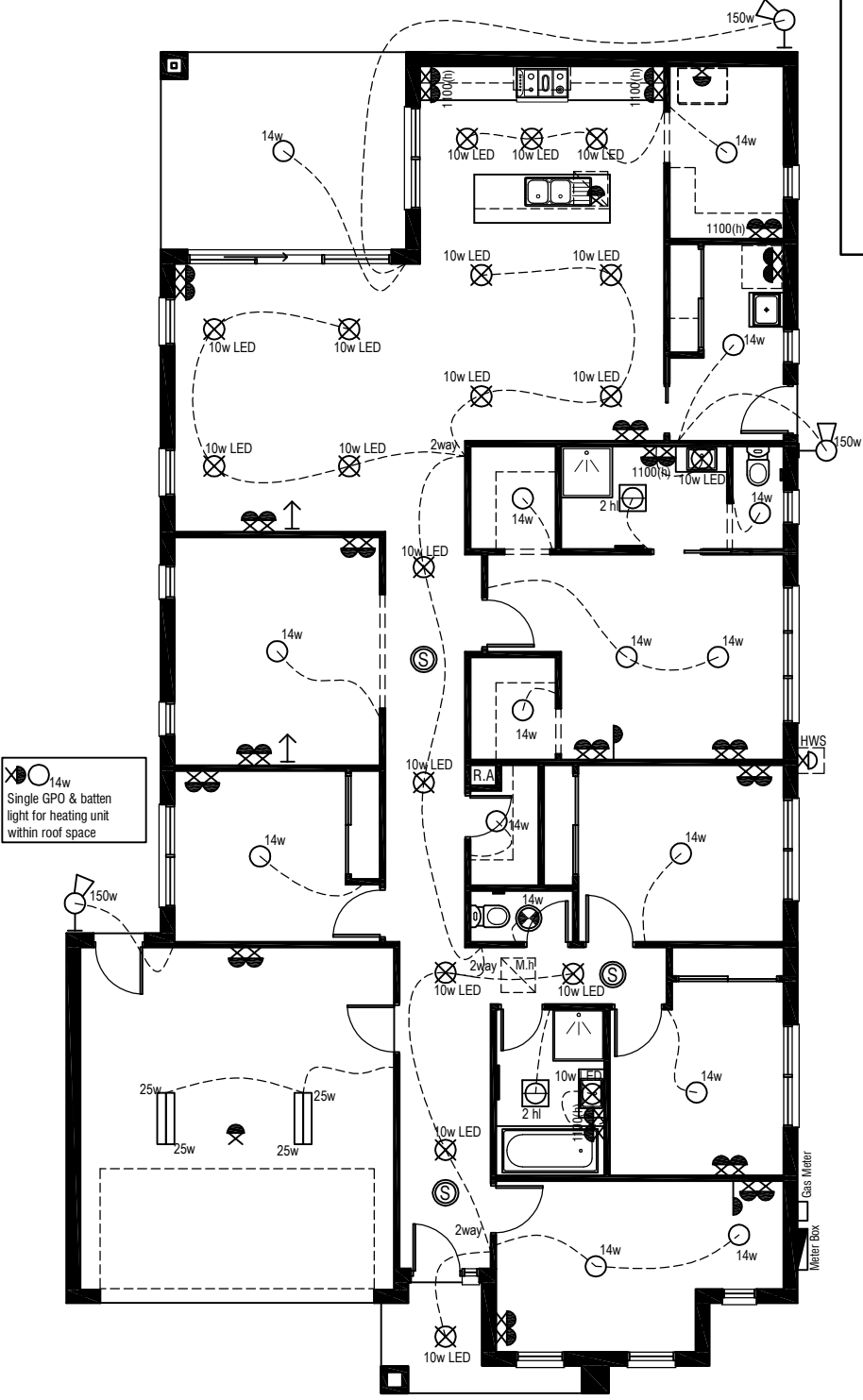


# YARRA 29 MK2

## Electrical Legend

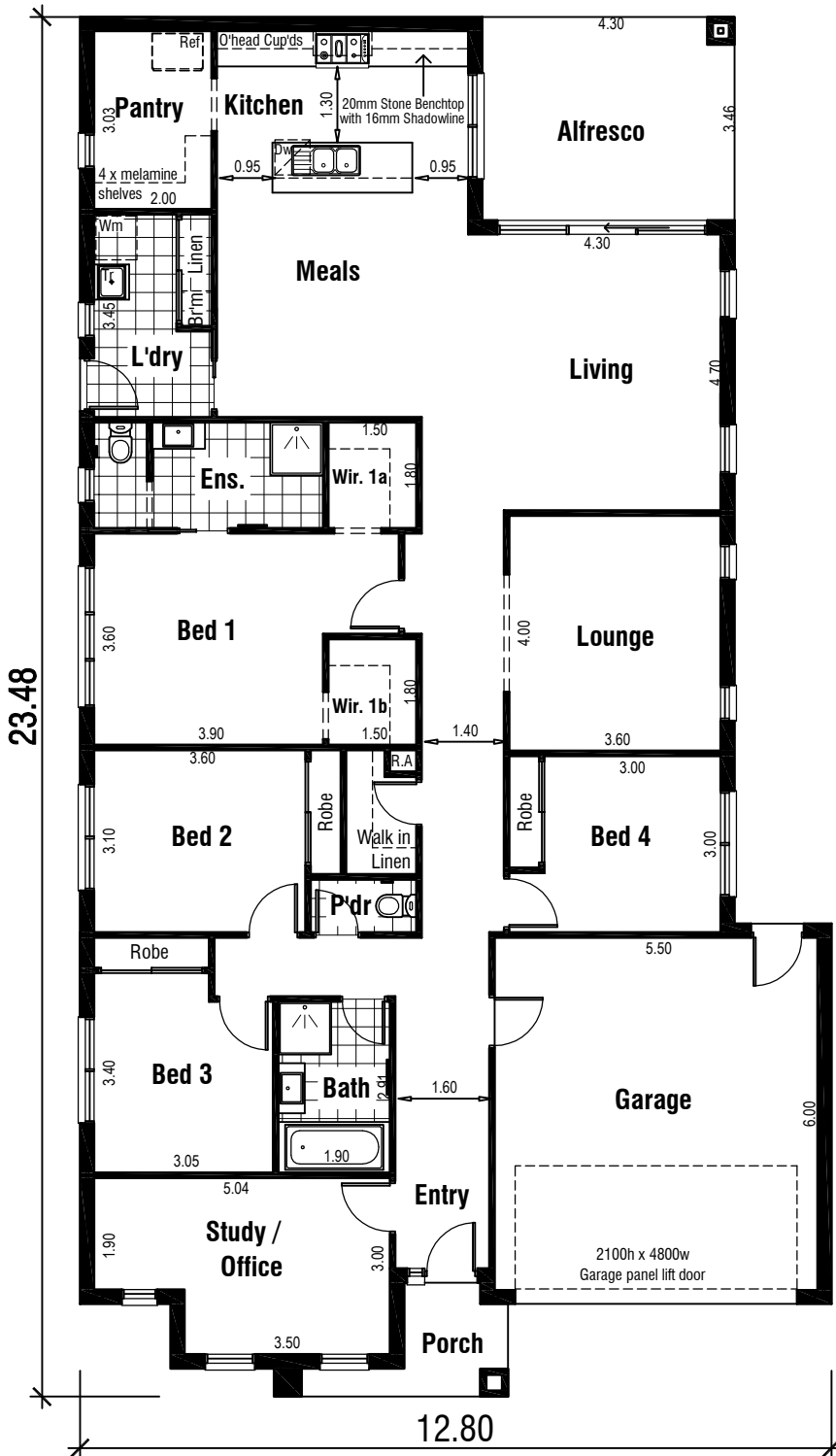
- Smoke Alarm
- Electrical meter box
- 14w Ceiling mounted Oyster fitting with 14 watt globe
- 10w LED Ceiling mounted downlight 10 watt L.E.D Globe
- 150w Wall mounted external flood light with 150 watt globe
- 3 in 1 - Exhaust Fan with 'draft stopper', Light & 2 x Heat globes
- 14w Exhaust Fan & Light - with 'draft stopper'
- Weatherproof External Double GPO
- Double GPO
- Single GPO
- TV point
- Phone point
- 25w Ceiling mounted double fluo light with 25 watt globe

Wattage Allowance	
Internal of dwelling - (Class 1)	
Proposed total wattage of light fittings:	404.00 w
Max allowable wattage:	1042.45 w
Internal of garage - (Class 10)	
Proposed total wattage of light fittings:	100.00 w
Max allowable wattage:	108.72 w
Porch, Alfresco, Balconies etc.. - (Class 1)	
Proposed total wattage of light fittings:	24.00 w
Max allowable wattage:	75.92 w



Proposed Electrical Plan

# YARRA 29 MK 2



## Areas Analysis :

Dwelling :	207.88 m <sup>2</sup>	22.38 sqs
Garage :	36.24 m <sup>2</sup>	
Porch :	4.10 m <sup>2</sup>	
Alfresco :	14.88 m <sup>2</sup>	
<b>Total :</b>	<b>263.10 m<sup>2</sup></b>	<b>28.32 sqs</b>

Suits 14(w) x 32(d) M  
Min. Block

Floor Plan



Front Elevation