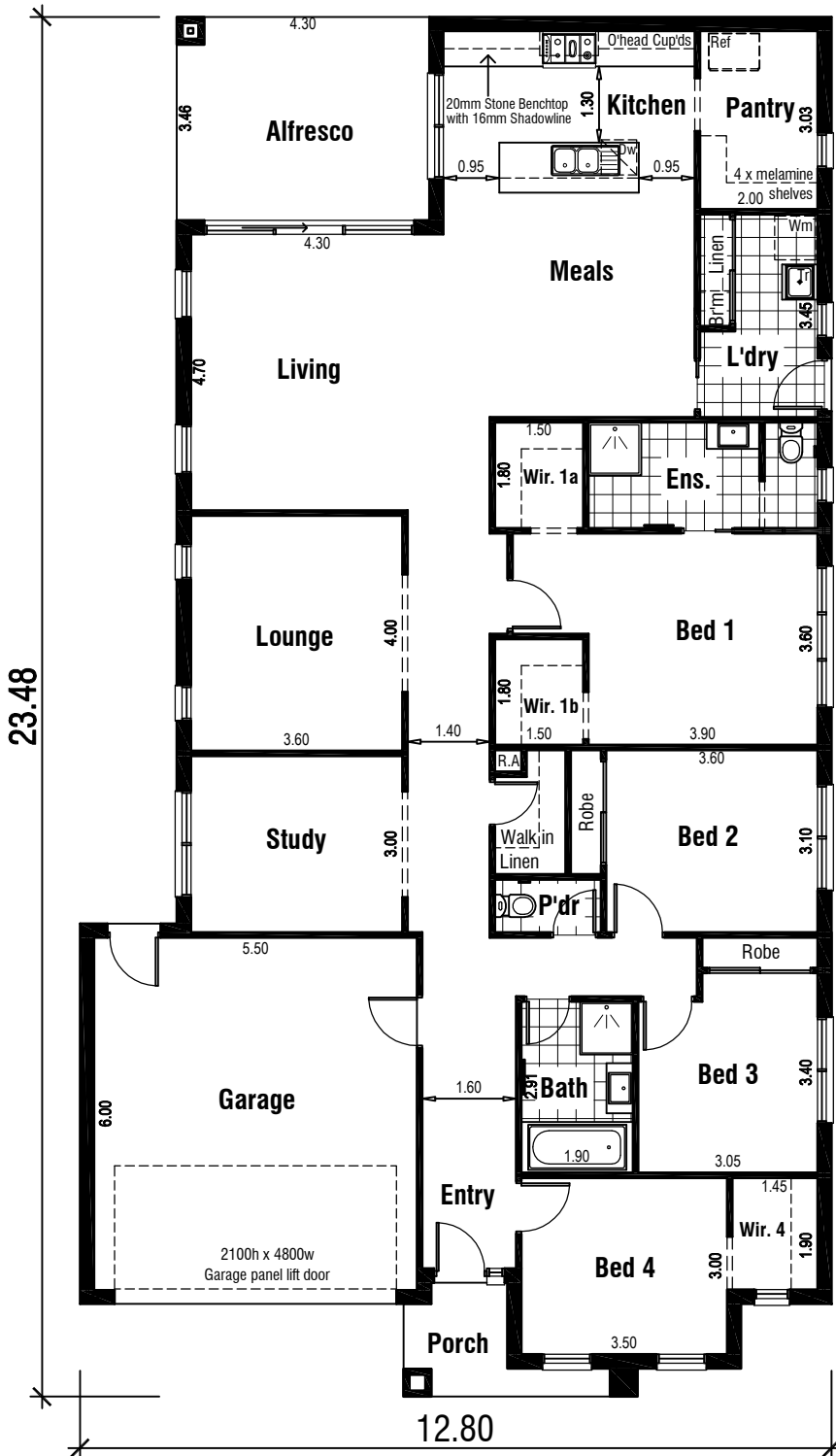


YARRA 29 MK 1



Areas Analysis :

Dwelling :	207.88 m ²	22.38 sqs
Garage :	36.24 m ²	
Porch :	4.10 m ²	
Alfresco :	14.88 m ²	
Total :	263.10 m²	28.32 sqs

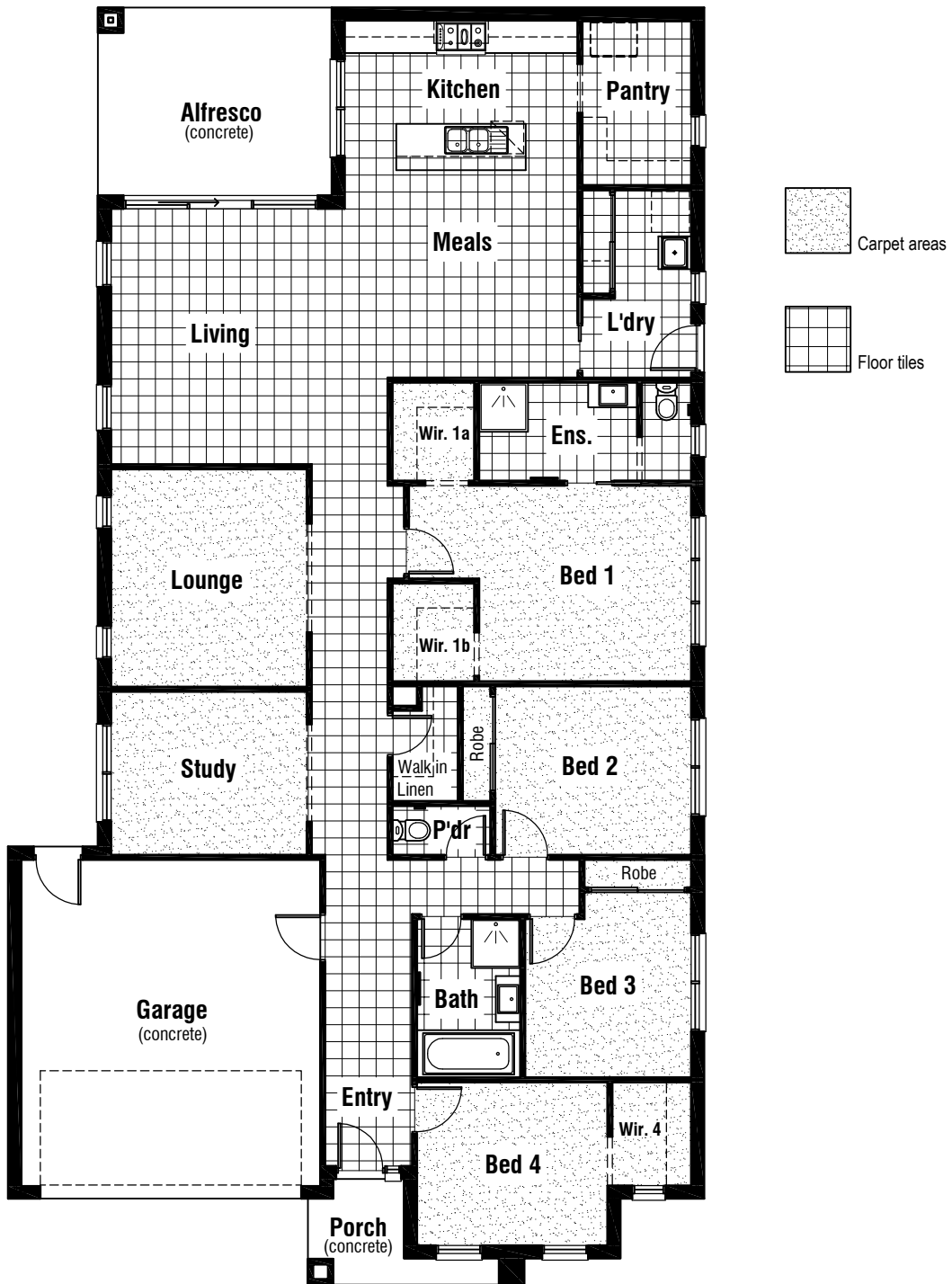
Suits 14(w) x 32(d) M
Min. Block

Floor Plan



Front Elevation

YARRA 29 MK 1



Floor Coverings Plan

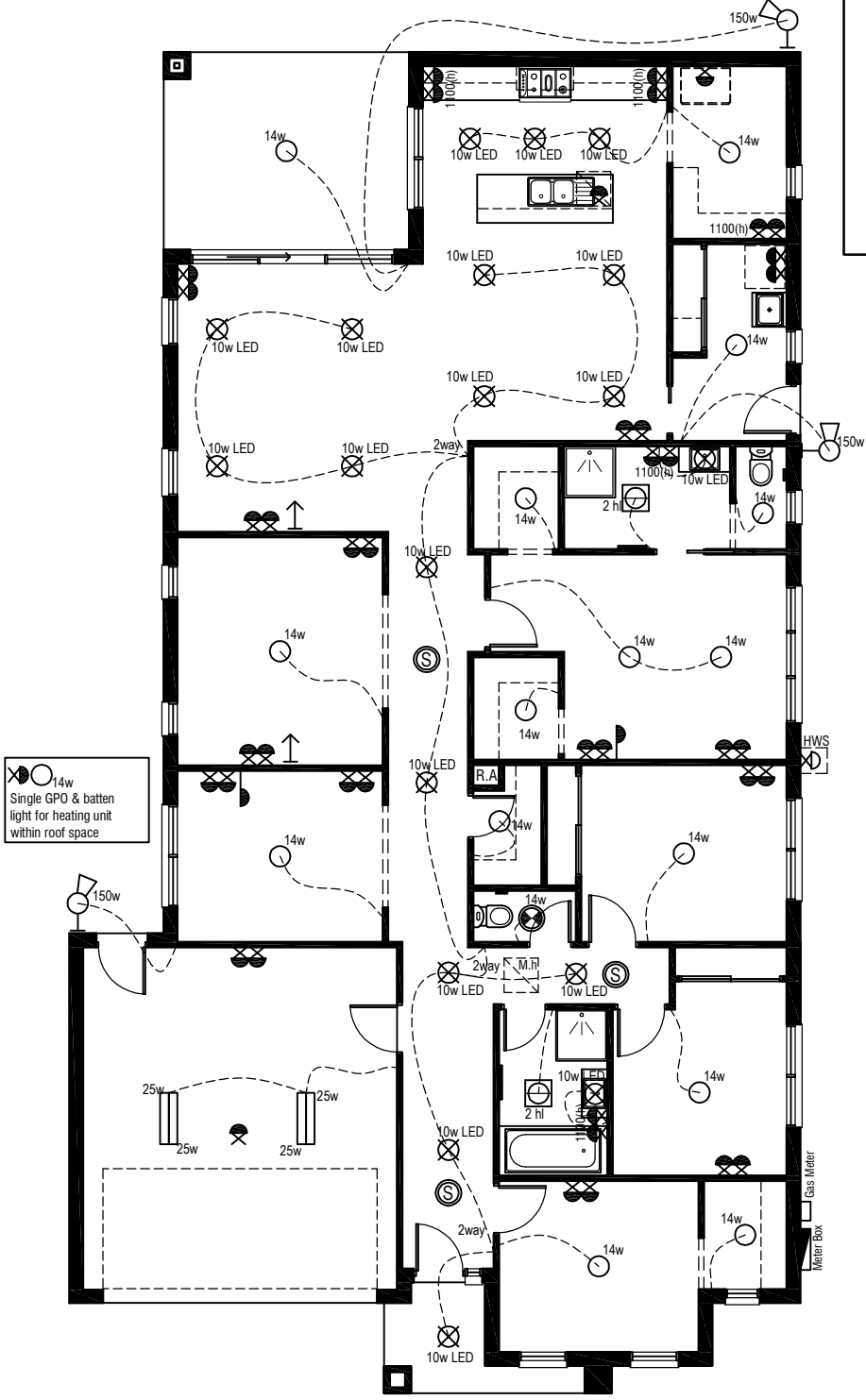


YARRA 29 MK1

Electrical Legend

- Smoke Alarm
- Electrical meter box
- 14w Ceiling mounted Oyster fitting with 14 watt globe
- 10w LED Ceiling mounted downlight 10 watt L.E.D Globe
- 150w Wall mounted external flood light with 150 watt globe
- 3 in 1 - Exhaust Fan with 'draft stopper', Light & 2 x Heat globes
- 14w Exhaust Fan & Light - with 'draft stopper'
- Weatherproof External Double GPO
- Double GPO
- Single GPO
- TV point
- Phone point
- 25w Ceiling mounted double fluoro light with 25 watt globe

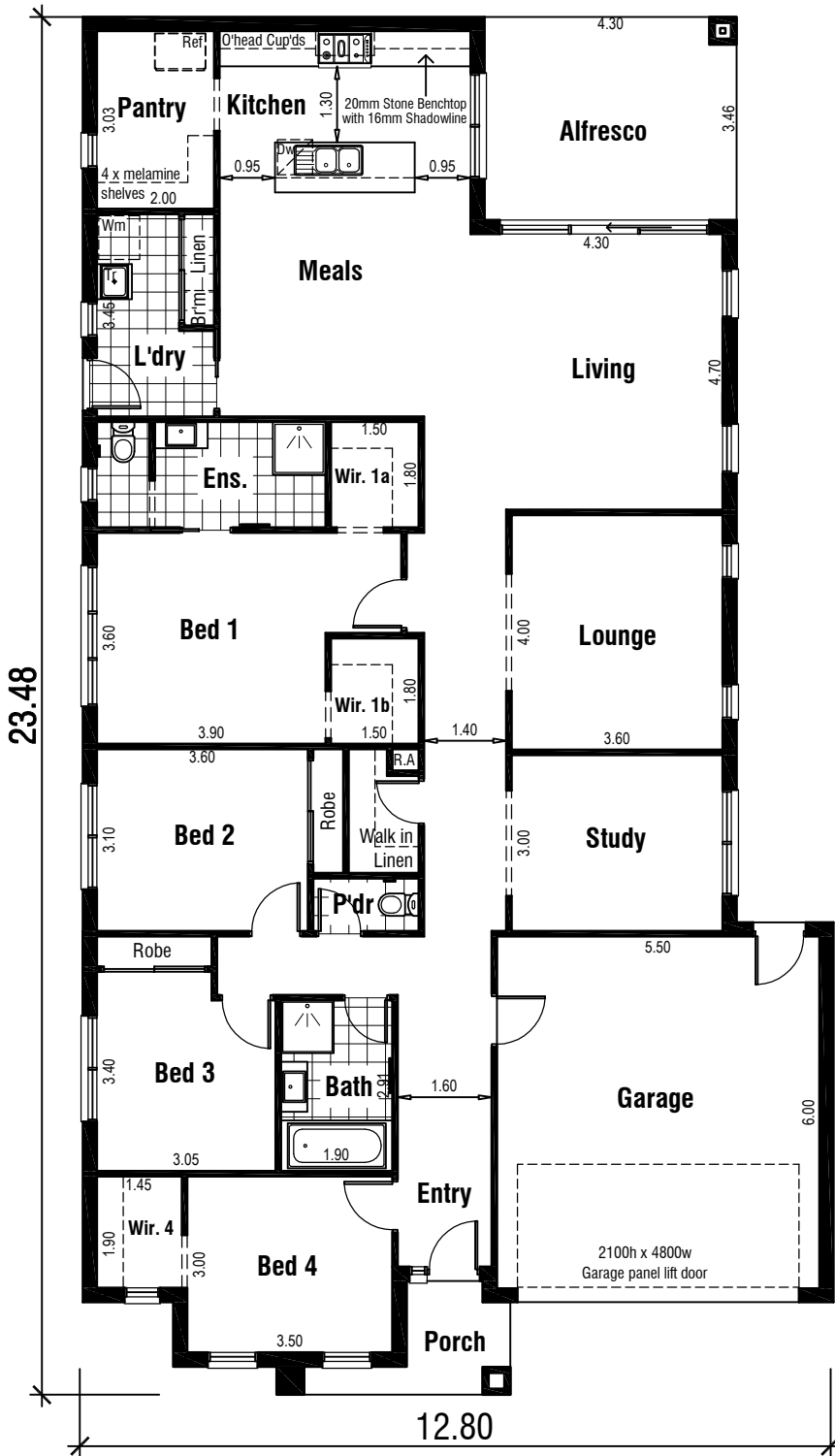
Wattage Allowance	
Internal of dwelling - (Class 1)	
Proposed total wattage of light fittings:	404.00 w
Max allowable wattage:	1042.45 w
Internal of garage - (Class 10)	
Proposed total wattage of light fittings:	100.00 w
Max allowable wattage:	108.72 w
Porch, Alfresco, Balconies etc.. - (Class 1)	
Proposed total wattage of light fittings:	24.00 w
Max allowable wattage:	75.92 w



14w Single GPO & batten light for heating unit within roof space

Proposed Electrical Plan

YARRA 29 MK1



Areas Analysis :

Dwelling :	207.88 m ²	22.38 sqs
Garage :	36.24 m ²	
Porch :	4.10 m ²	
Alfresco :	14.88 m ²	
Total :	263.10 m²	28.32 sqs

Suits 14(w) x 32(d) M
Min. Block

Floor Plan



Front Elevation