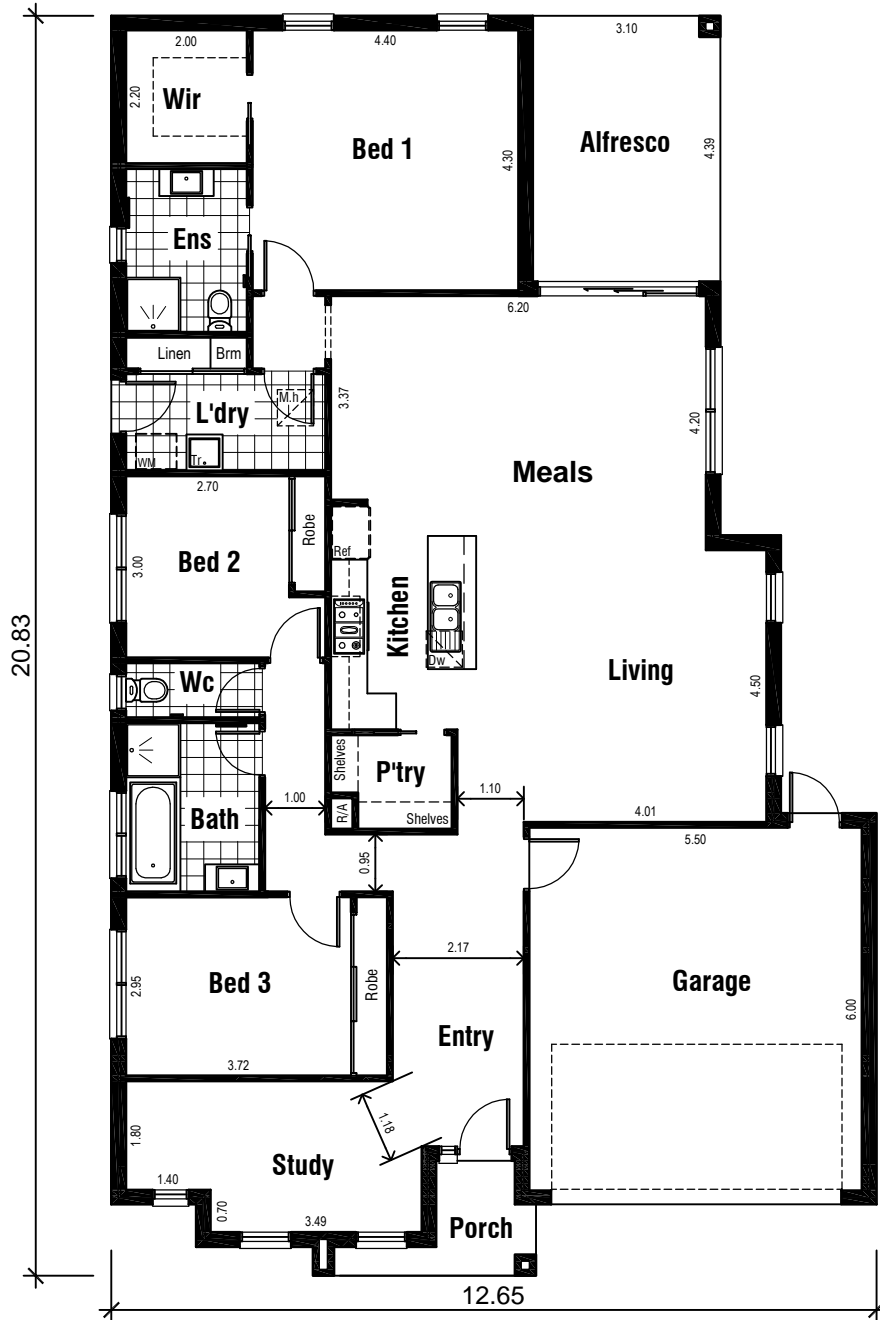


# YARRA 24



## Areas Analysis :

Dwelling :	171.25 m2
Garage :	36.31 m2
Porch :	3.69 m2
Alfresco :	13.61 m2
<b>Total :</b>	<b>224.86 m2 24.21 sqs</b>

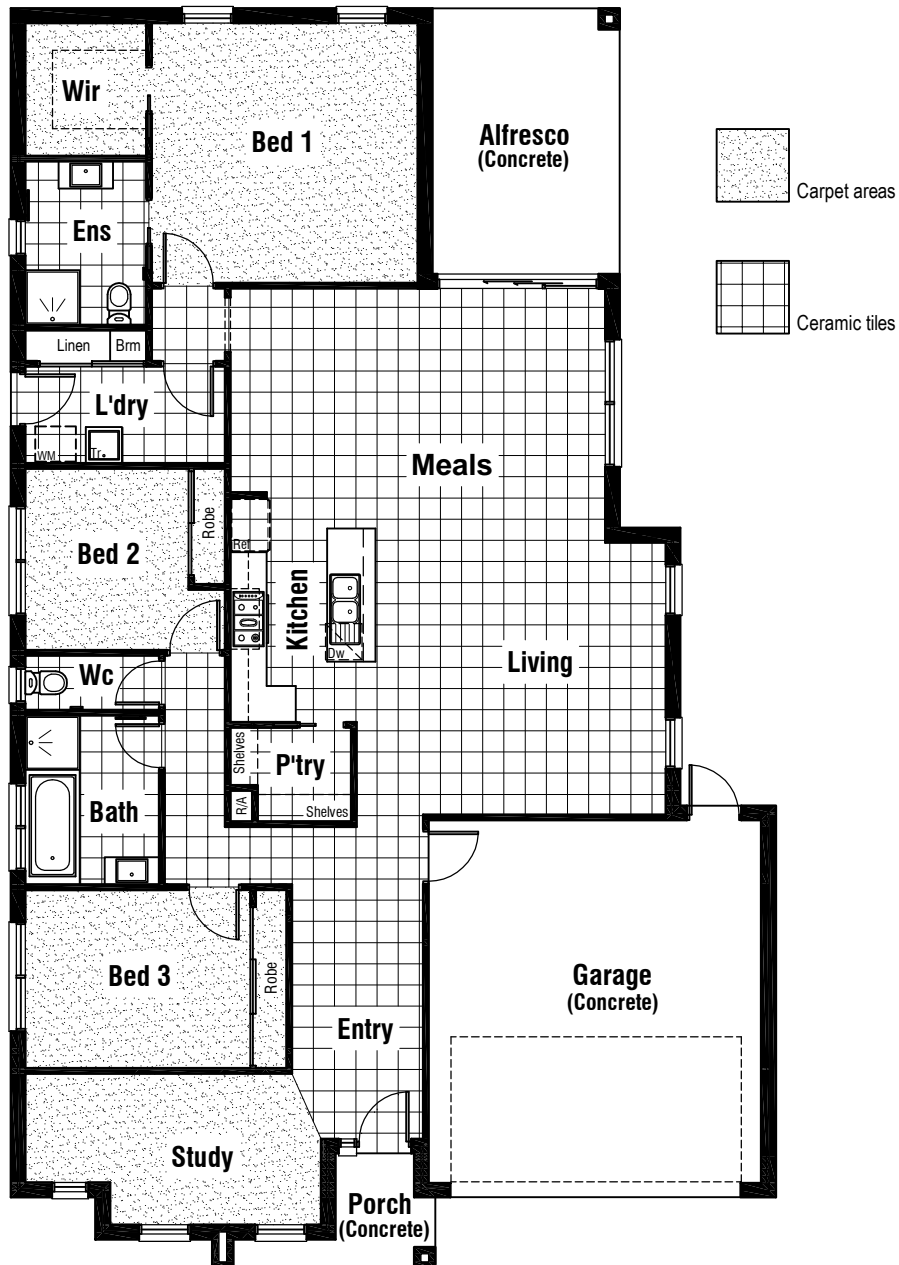
Suits 14.00 M  
Min. Block

Floor Plan



Front Elevation

# YARRA 24



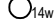

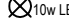
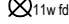
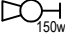
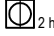





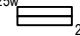


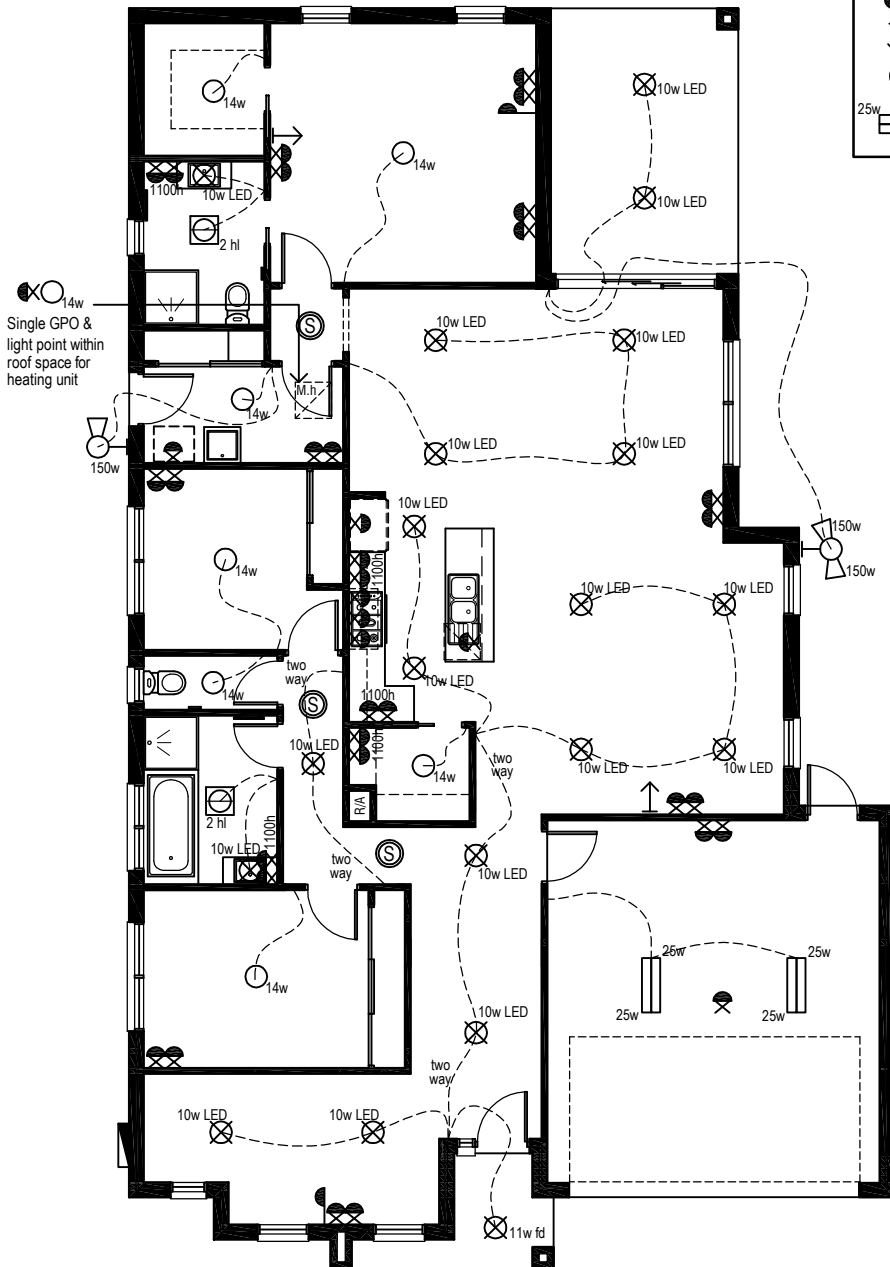
Floor Coverings Plan



# YARRA 24

## Electrical Legend

-  Smoke Alarm
-  Electrical meter box
-  14w Ceiling mounted Oyster fitting with 14 watt globe
-  35w hd Ceiling mounted 70mm downlight 35 watt Halogen light
-  10w LED Ceiling mounted downlight 10 watt L.E.D Globe
-  11w fd Ceiling mounted downlight 11 watt fluoro light
-  150w Wall mounted external flood light with 150 watt globe
-  2 hl 3 in 1 - Exhaust Fan with 'draft stopper', Light & 2 x Heat globes
-  Weatherproof External Double GPO
-  Double GPO
-  Single GPO
-  TV point
-  Phone point
-  25w Ceiling mounted double fluoro light with 25 watt globe

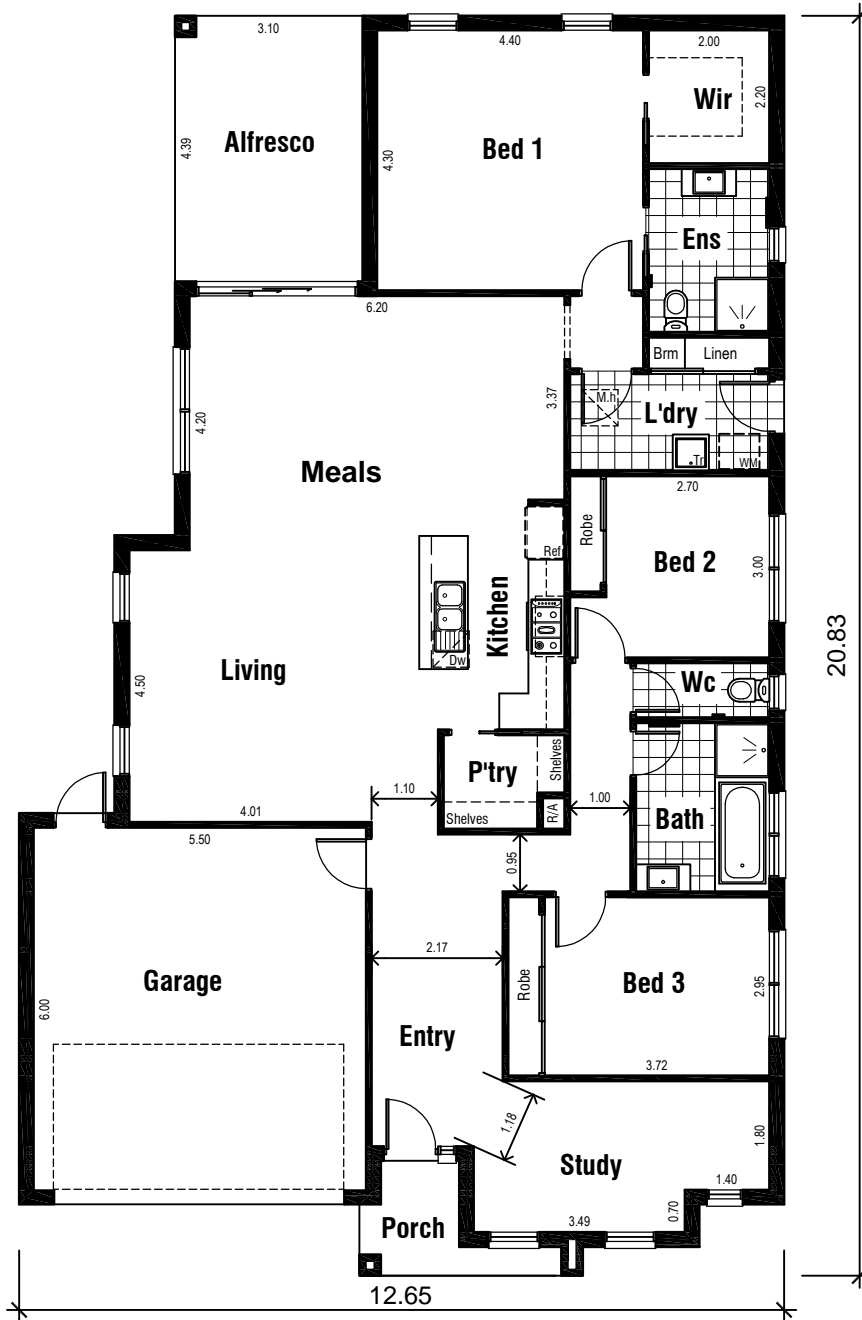


### Wattage Allowance

Internal of dwelling - (Class 1)	
Proposed total wattage of light fittings:	282.00 w
Max allowable wattage:	861.00 w
Internal of garage - (Class 10)	
Proposed total wattage of light fittings:	100.00 w
Max allowable wattage:	109.08 w
Porch, Alfresco, Balconies etc.. - (Class 1)	
Proposed total wattage of light fittings:	31.00 w
Max allowable wattage:	70.32 w

Proposed Electrical Plan

# YARRA 24



## Areas Analysis :

Dwelling : 171.25 m2  
 Garage : 36.31 m2  
 Porch : 3.69 m2  
 Alfresco : 13.61 m2

Total : 224.86 m2 24.21 sqs

Suits 14.00 M  
 Min. Block

Floor Plan



Front Elevation