

ILLAWARRA 33



Areas Analysis :

Dwelling :	238.57 m2	25.68 sq
Garage :	36.94 m2	
Alfresco :	22.91 m2	
Porch :	7.87 m2	
Total :	306.23 m2	32.97 sq

Suits 18.0 M
Min. Block

Floor Plan



Front Elevation

ILLAWARRA 33








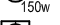





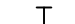


Floor Coverings Plan

ILLAWARRA 33

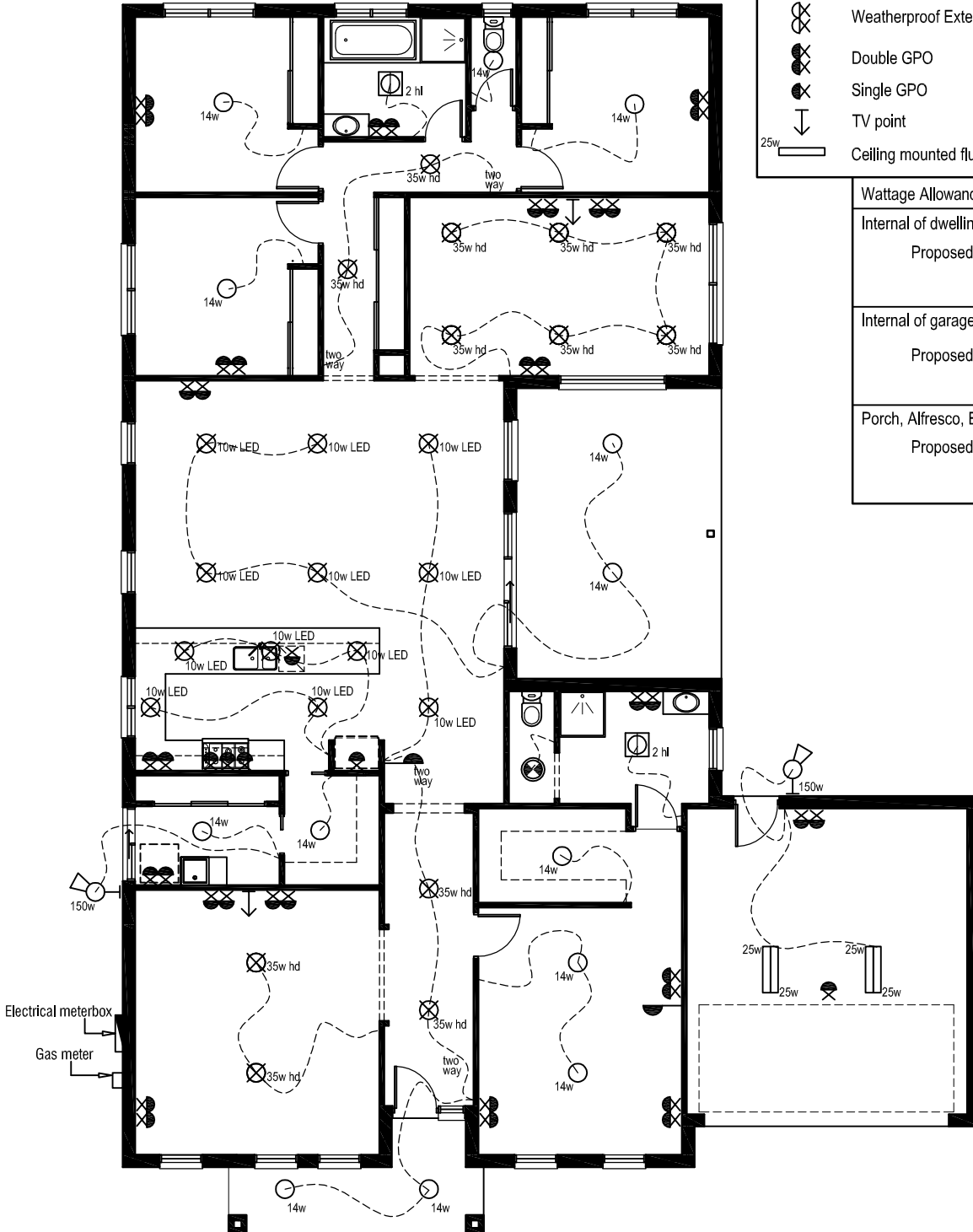


Electrical Legend

-  Smoke Alarm
-  Electrical meter box
-  14w Ceiling mounted Oyster fitting with 14 watt globe
-  35w hd Ceiling mounted downlight 35 watt halogen light
-  10w LED Ceiling mounted 70mm Ø 10 watt L.E.D downlight
-  Phone Point
-  150w Wall mounted external flood light with 150 watt globe
-  2 hl 3 in 1 - Exhaust Fan with 'draft stopper', Light & 2 x Heat globes
-  Exhaust Fan & Light - with 'draft stopper'
-  Weatherproof External Double GPO
-  Double GPO
-  Single GPO
-  TV point
-  25w Ceiling mounted fluro light with 25 watt globe

Wattage Allowance

Internal of dwelling - (Class 1)	
Proposed total wattage of light fittings:	652.00 w
Max allowable wattage:	1192.85 w
Internal of garage - (Class 10)	
Proposed total wattage of light fittings:	100.00 w
Max allowable wattage:	110.82 w
Porch, Alfresco, Balconies etc.. - (Class 1)	
Proposed total wattage of light fittings:	56.00 w
Max allowable wattage:	123.12 w



Electrical Plan

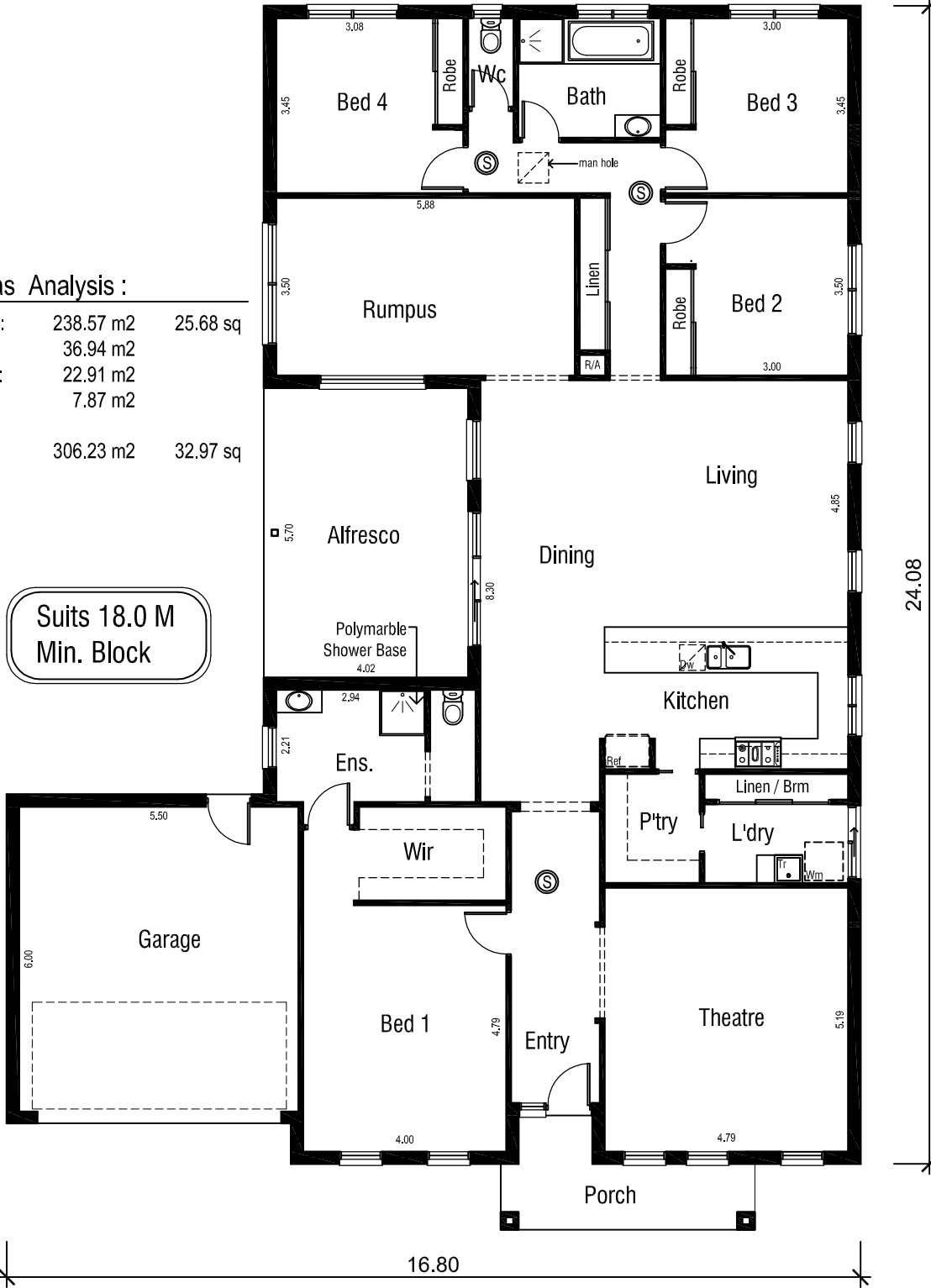
ILLAWARRA 33



Areas Analysis :

Dwelling :	238.57 m2	25.68 sq
Garage :	36.94 m2	
Alfresco :	22.91 m2	
Porch :	7.87 m2	
Total :	306.23 m2	32.97 sq

Suits 18.0 M
Min. Block



Floor Plan



Front Elevation