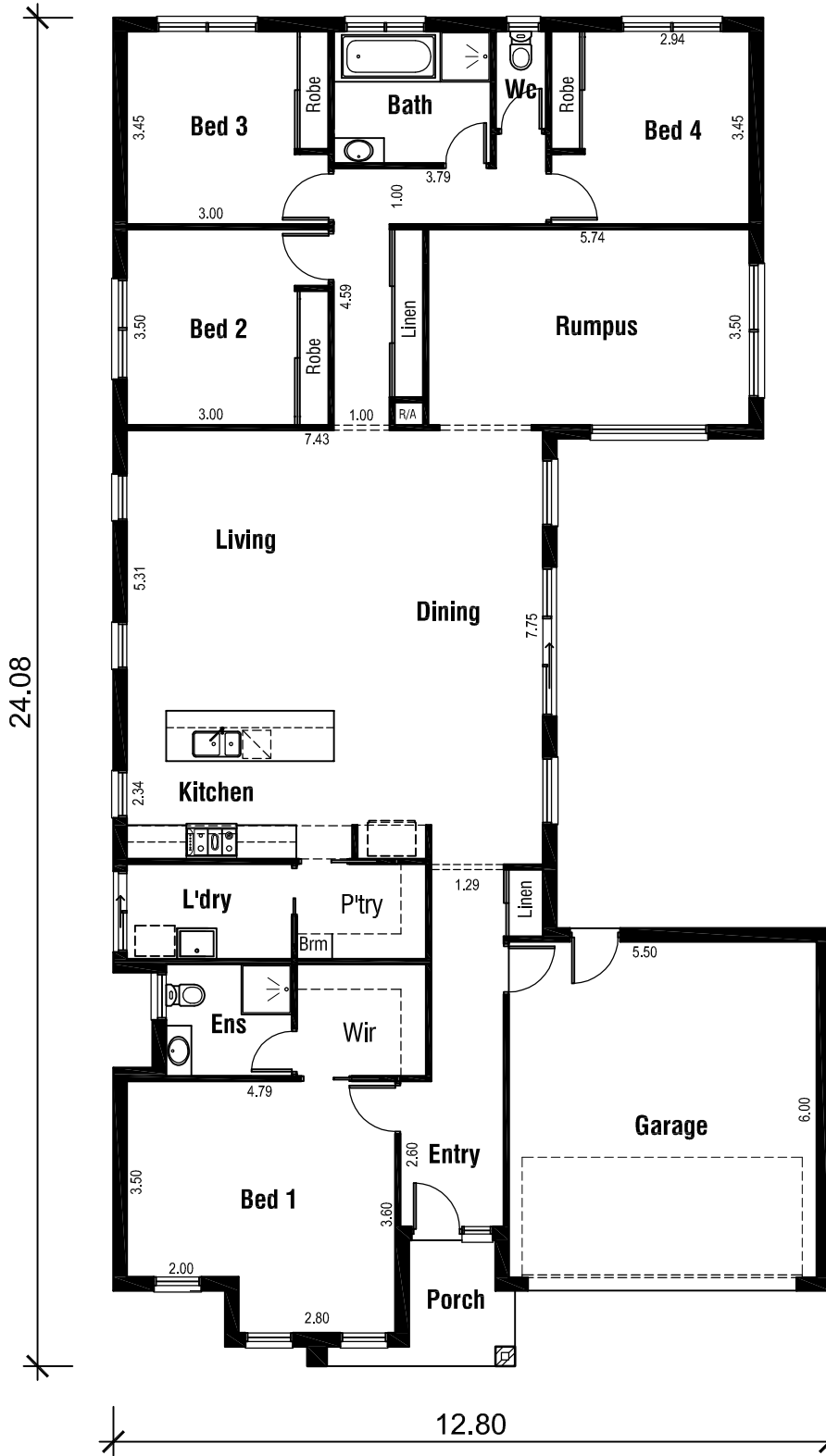


# ILLAWARRA 27



### Areas Analysis :

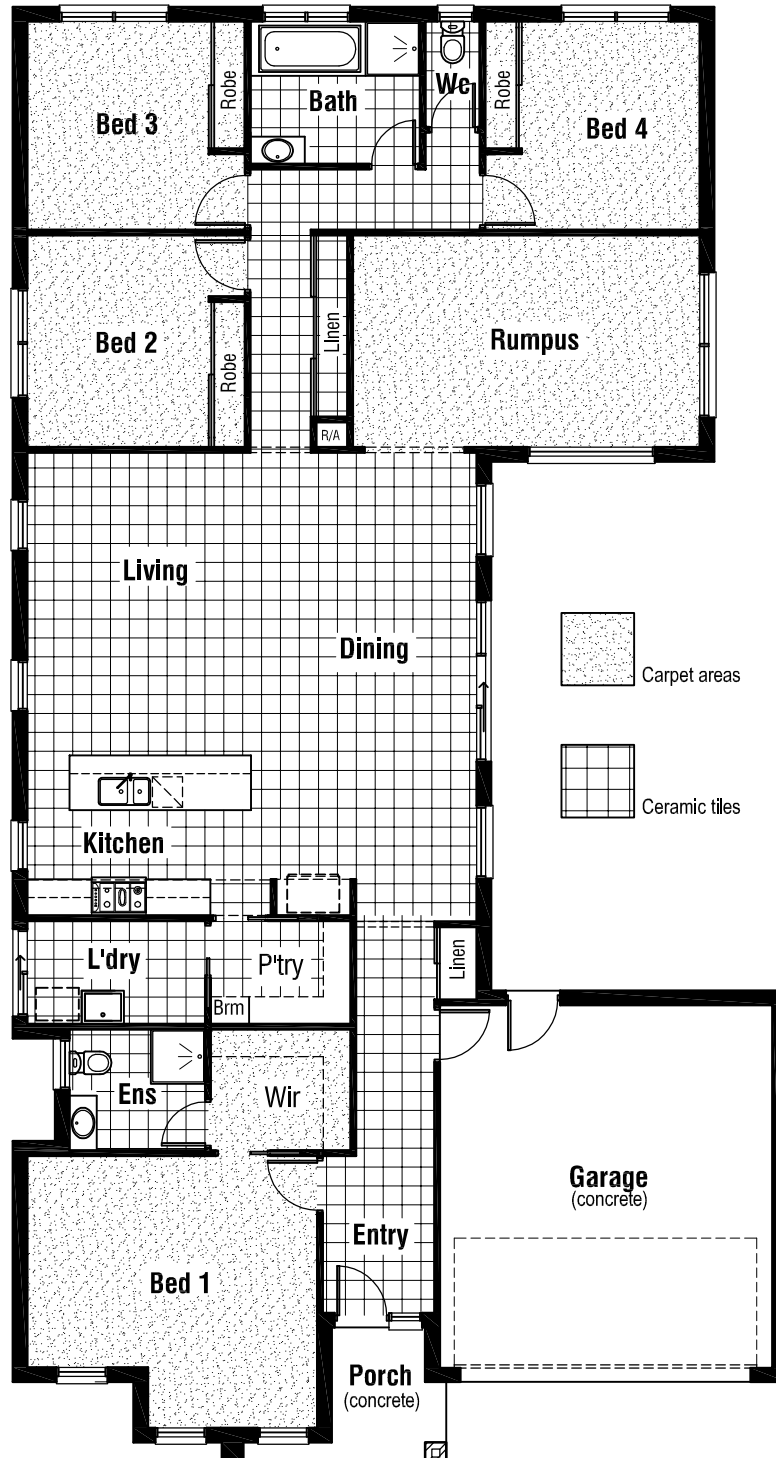
Dwelling :	202.84 m2	21.83 sqs
Garage :	37.71 m2	
Porch :	4.58 m2	
<b>Total :</b>	<b>245.13 m2</b>	<b>26.39 sqs</b>

Suits 14.0 M  
Min. Block

Floor Plan



Front Elevation



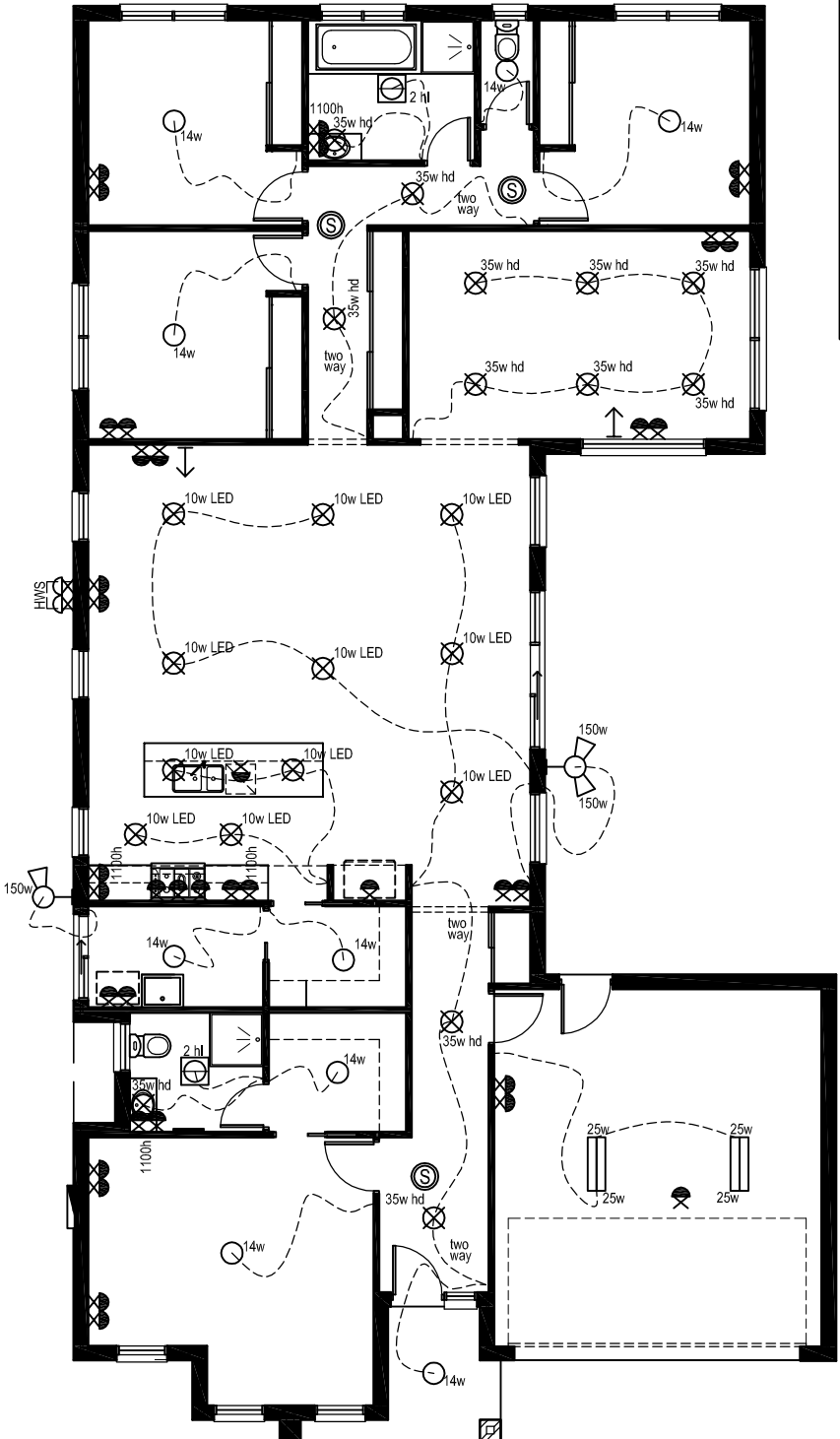
Floor Coverings Plan



# ILLAWARRA 27

### Electrical Legend

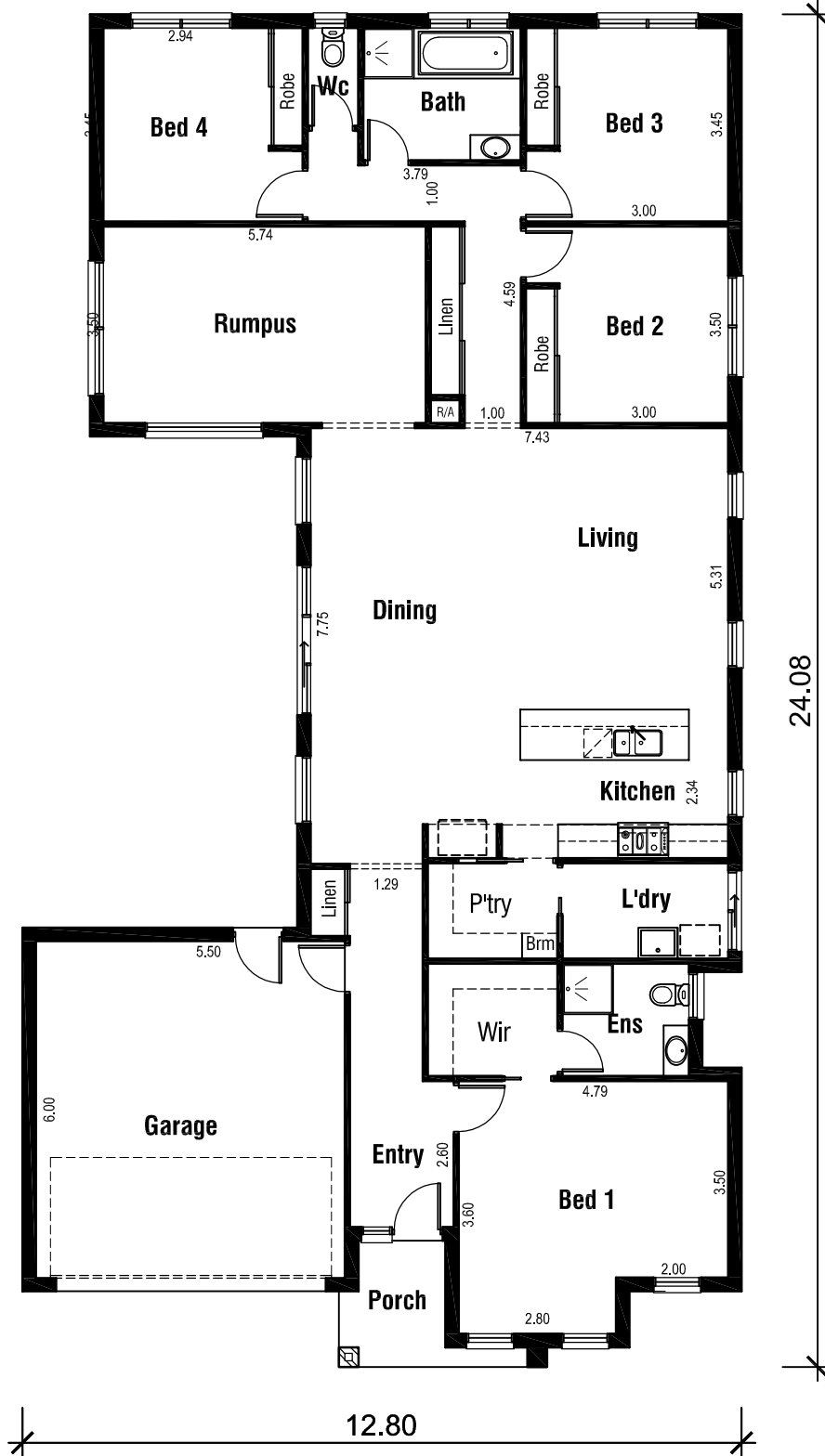
- Smoke Alarm
- Electrical meter box
- Ceiling mounted Oyster fitting with 14 watt globe
- Ceiling mounted 70mm downlight 35 watt Halogen light
- Ceiling mounted downlight 10 watt L.E.D Globe
- Wall mounted external flood light with 150 watt globe
- 3 in 1 - Exhaust Fan with 'draft stopper', Light & 2 x Heat globes
- Weatherproof External Double GPO
- Double GPO
- Single GPO
- TV point
- Phone point
- Ceiling mounted double fluo light with 25 watt globe



Wattage Allowance	
Internal of dwelling - (Class 1)	
Proposed total wattage of light fittings:	656.00 w
Max allowable wattage:	1014.20 w
Internal of garage - (Class 10)	
Proposed total wattage of light fittings:	100.00 w
Max allowable wattage:	113.13 w
Porch, Alfresco, Balconies etc.. - (Class 1)	
Proposed total wattage of light fittings:	18.00 w
Max allowable wattage:	18.32 w

Electrical Plan

# ILLAWARRA 27



Suits 14.0 M  
Min. Block

Floor Plan



Front Elevation