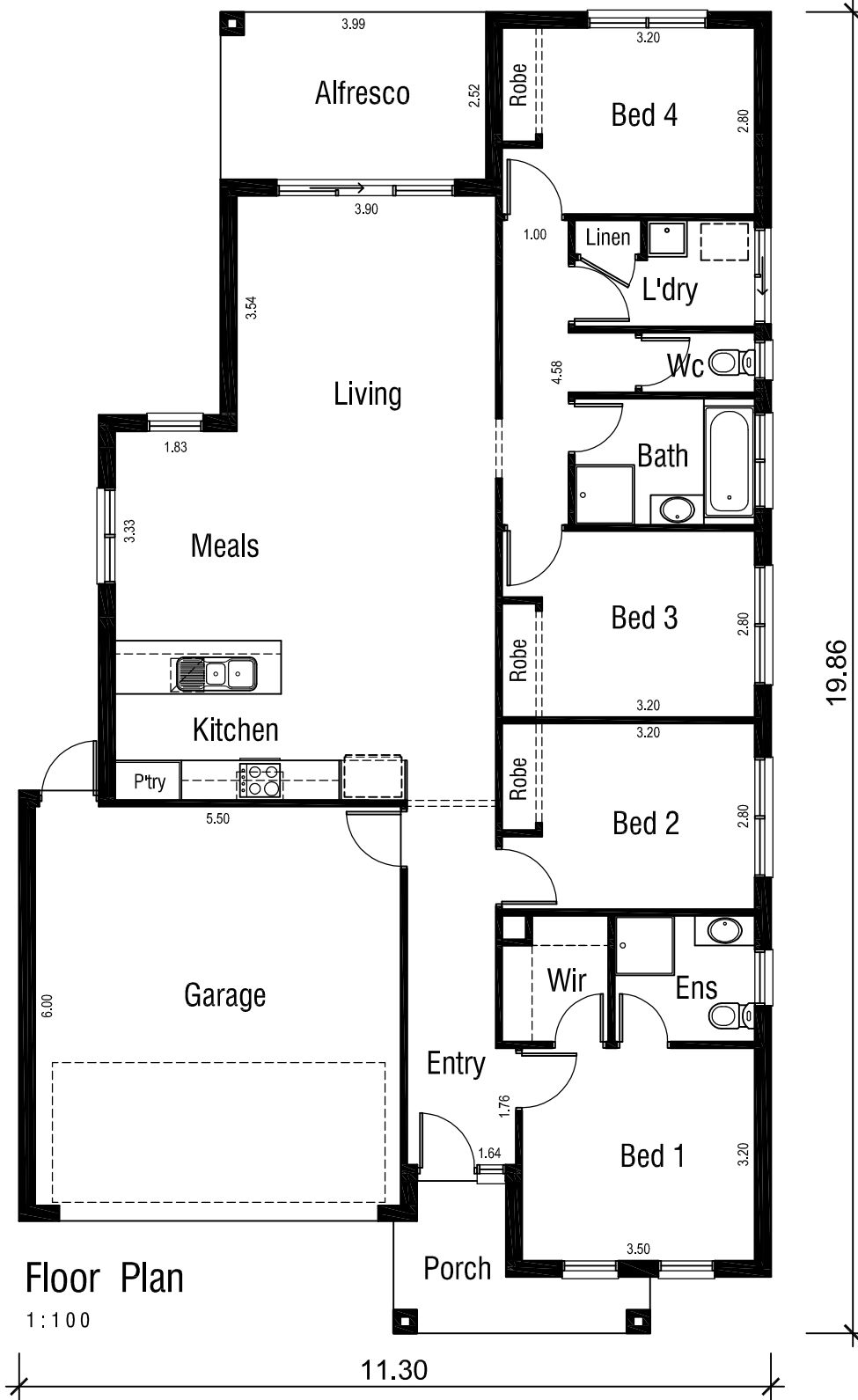


ELECTRA 12.50



Areas Analysis :

Dwelling :	136.63 m2	14.71 sqs
Garage :	36.05 m2	
Porch :	5.50 m2	
Alfresco :	10.05 m2	
Total :	188.23 m2	20.26 sqs

Suits 12.50 M
Min. Block



Front Elevation

ELECTRA 12.50



Floor Coverings Plan

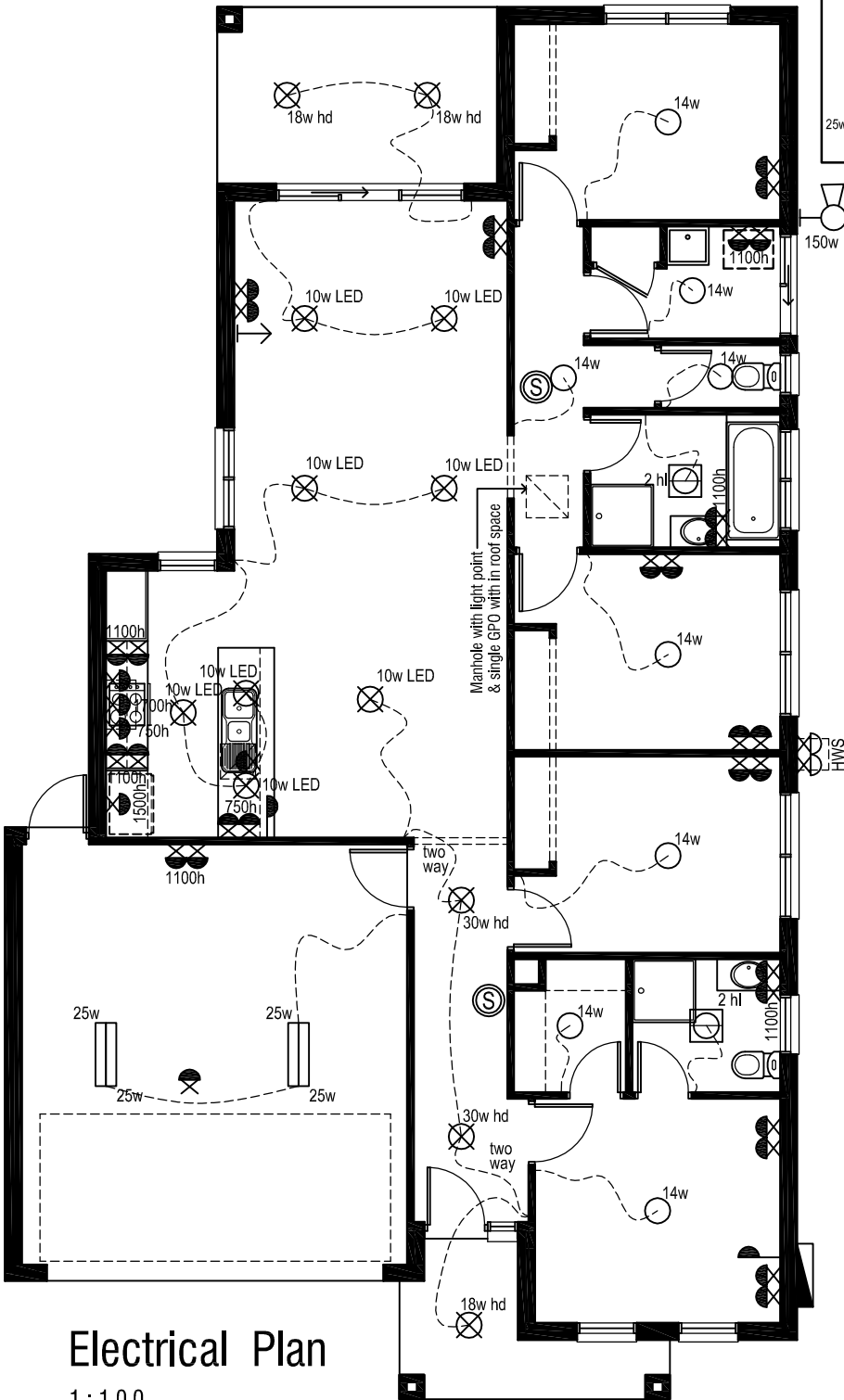
1:100

ELECTRA 12.50



Electrical Legend

- Smoke Alarm
- Electrical meter box
- Ceiling mounted Oyster fitting with 14 watt globe
- Ceiling mounted 70mm downlight 18 watt fluro light
- Ceiling mounted 70mm downlight 30 watt halogen light
- Ceiling mounted 70mm Ø 10 watt L.E.D downlight
- Phone Point
- Wall mounted external flood light with 150 watt globe
- 3 in 1 - Exhaust Fan with 'draft stopper', Light & 2 x Heat globes
- Exhaust Fan & Light - with 'draft stopper'
- Weatherproof External Double GPO
- Double GPO
- Single GPO
- TV point
- Ceiling mounted fluro light with double 25 watt globe

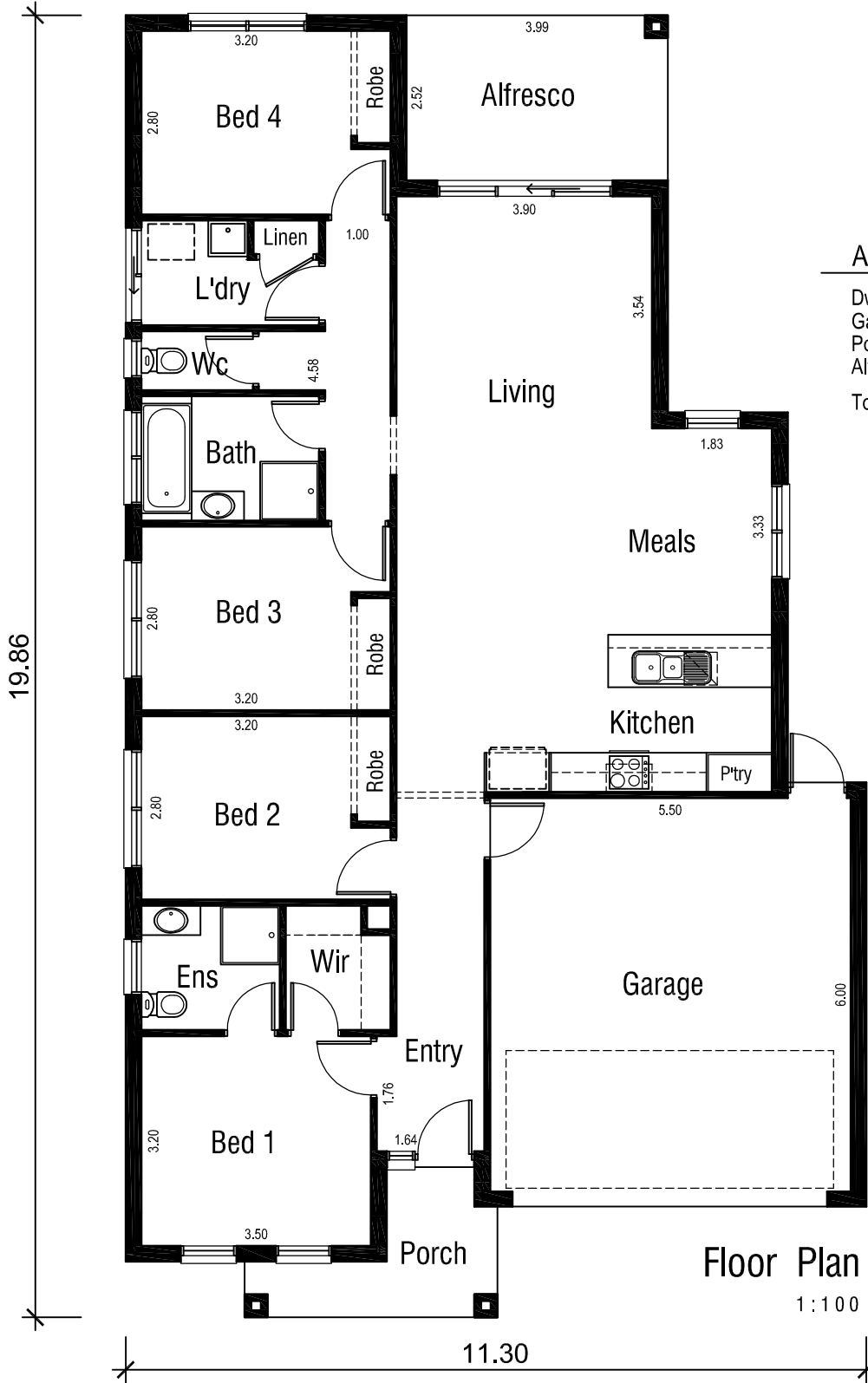


Wattage Allowance	
Internal of dwelling - (Class 1)	
Proposed total wattage of light fittings:	252.00 w
Max allowable wattage:	666.45 w
Internal of garage - (Class 10)	
Proposed total wattage of light fittings:	100.00 w
Max allowable wattage:	108.57 w
Porch, Alfresco, Balconies etc.. - (Class 1)	
Proposed total wattage of light fittings:	48.00 w
Max allowable wattage:	62.20 w

Electrical Plan

1 : 100

ELECTRA 12.50



Areas Analysis :

Dwelling :	136.63 m2	14.71 sqs
Garage :	36.05 m2	
Porch :	5.50 m2	
Alfresco :	10.05 m2	
Total :	188.23 m2	20.26 sqs

Suits 12.50 M
Min. Block

Floor Plan
1:100



Front Elevation