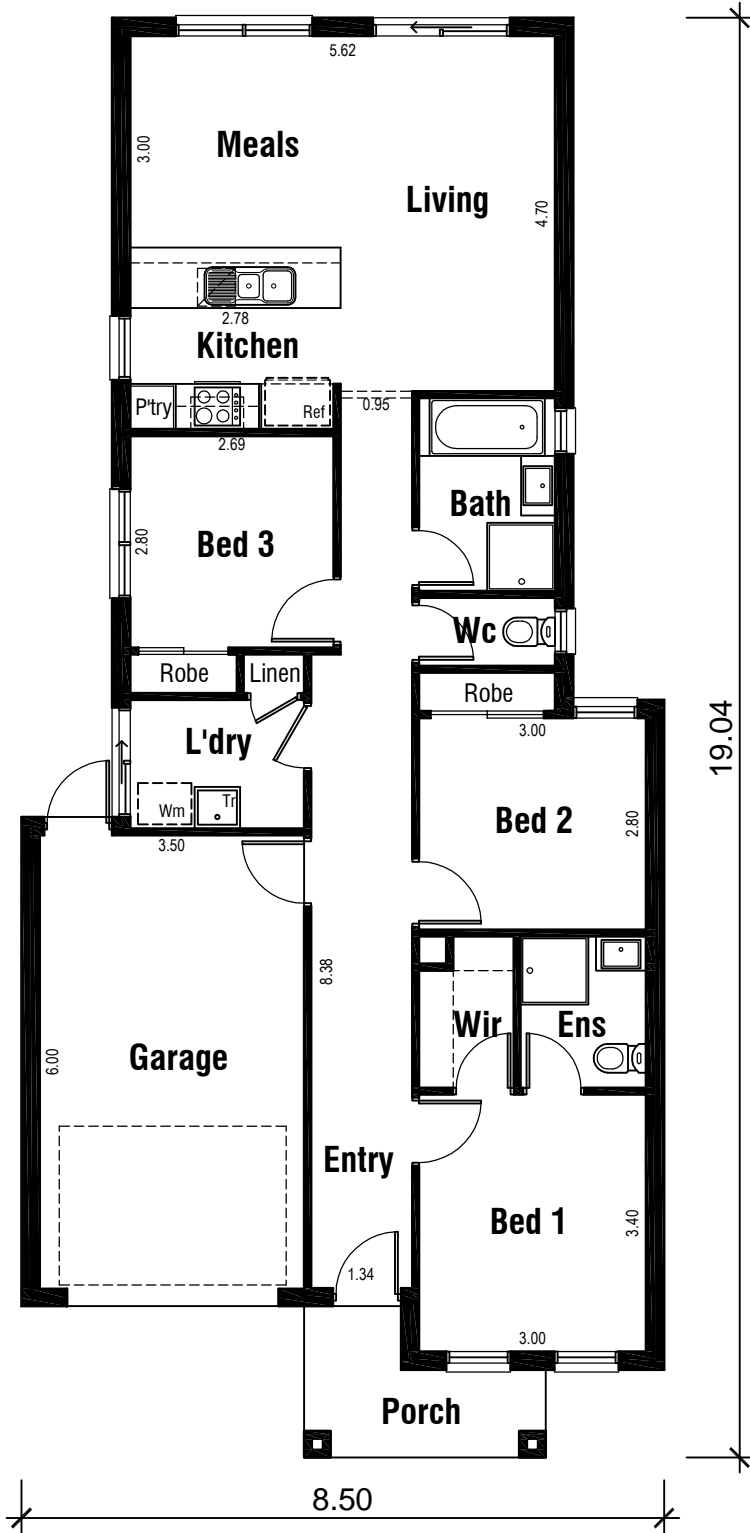


ELECTRA 8.50



Areas Analysis :

Dwelling :	100.66 m2	10.83 sqs
Garage :	23.58 m2	
Porch :	4.78 m2	
Total :	129.02 m2	13.88 sqs

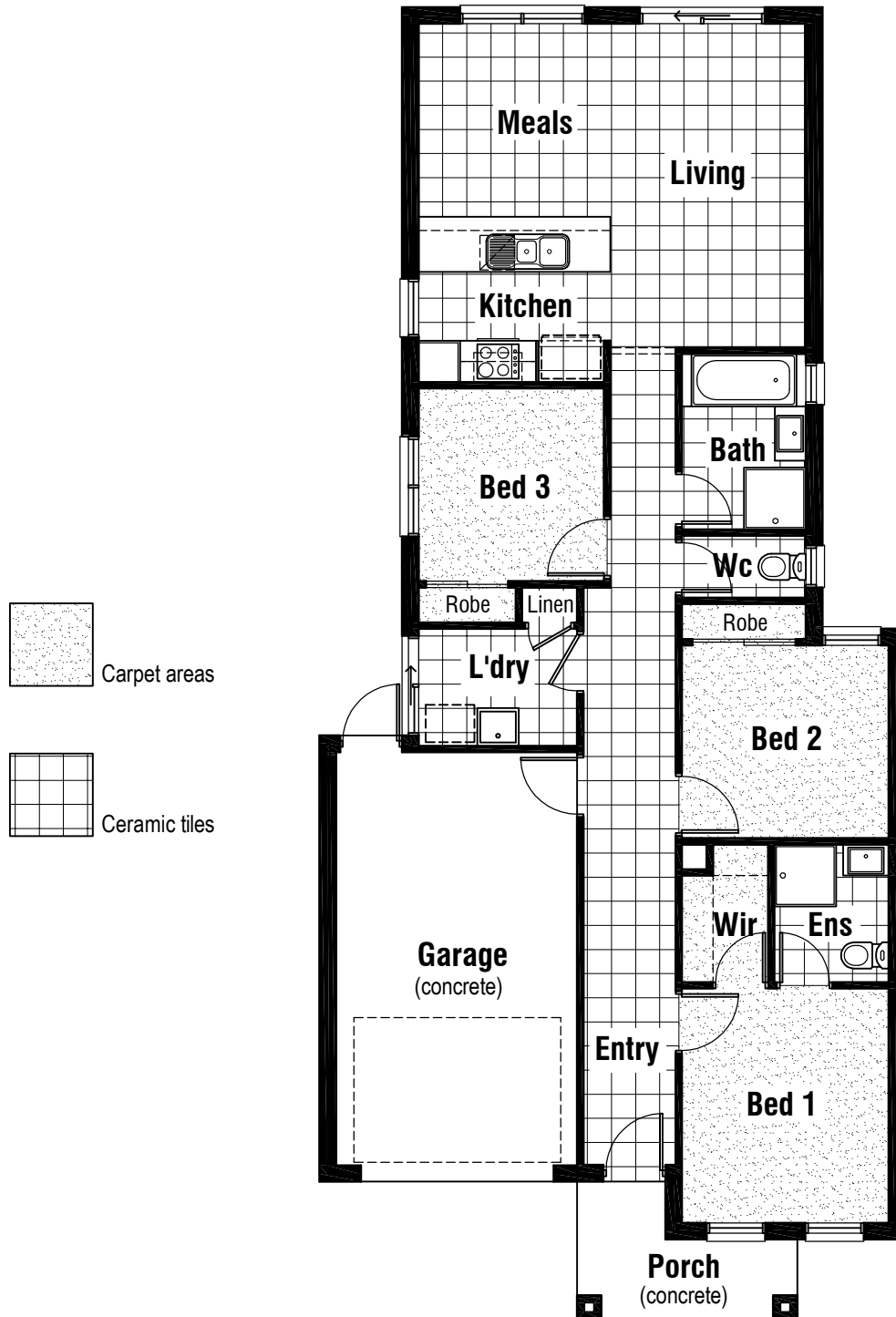
Suits 8.50 M
Min. Block

Floor Plan
1:100



Front Elevation
1:100

ELECTRA 8.50








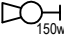
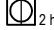





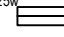
Floor Coverings Plan

1:100

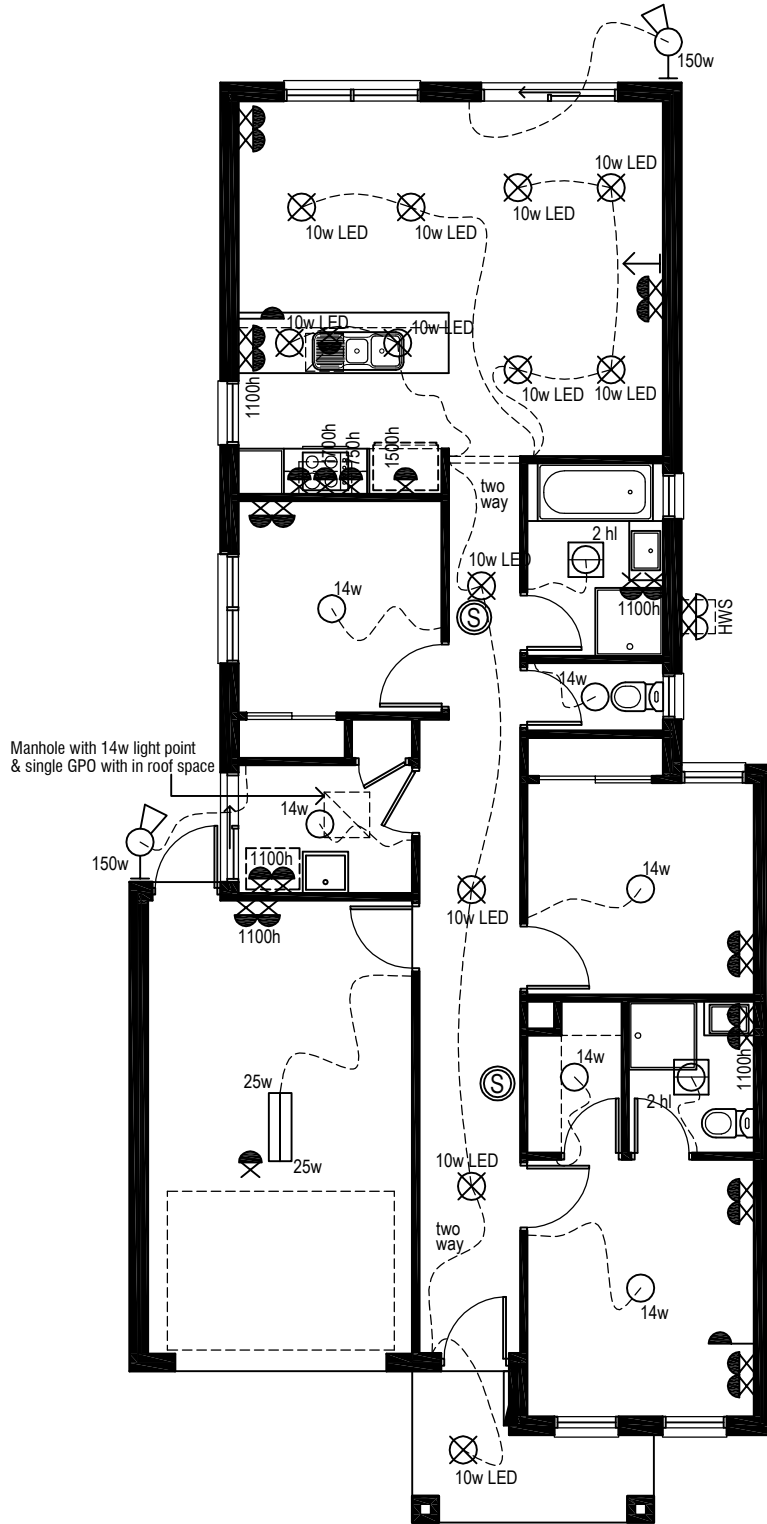
ELECTRA 8.50



Electrical Legend

-  Smoke Alarm
-  Electrical meter box
-  14w Ceiling mounted Oyster fitting with 14 watt globe
-  10w LED Ceiling mounted 10 watt L.E.D downlight
-  Phone Point
-  150w Wall mounted external flood light with 150 watt globe
-  2 hl 3 in 1 - Exhaust Fan with 'draft stopper', Light & 2 x Heat globes
-  Exhaust Fan & Light - with 'draft stopper'
-  Weatherproof External Double GPO
-  Double GPO
-  Single GPO
-  TV point
-  25w Ceiling mounted fluro light with double 25 watt globe

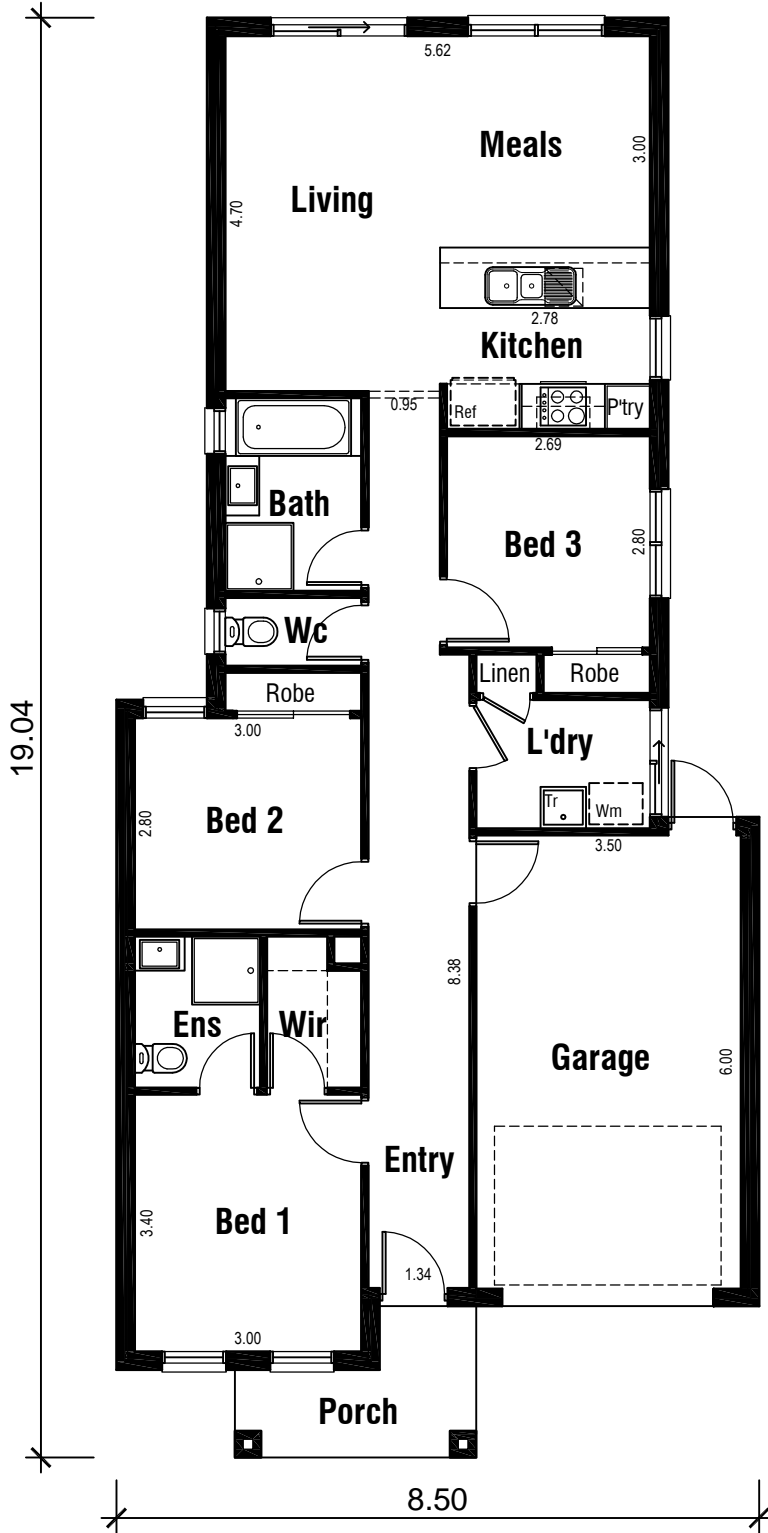
Wattage Allowance		
Internal of dwelling - (Class 1)		
Proposed total wattage of light fittings:		208.00 w
Max allowable wattage:		503.30 w
Internal of garage - (Class 10)		
Proposed total wattage of light fittings:		50.00 w
Max allowable wattage:		70.74 w
Porch, Alfresco, Balconies etc.. - (Class 1)		
Proposed total wattage of light fittings:		10.00 w
Max allowable wattage:		19.12 w



Electrical Plan

1 : 100

ELECTRA 8.50



Areas Analysis :

Dwelling :	100.66 m2	10.83 sqs
Garage :	23.58 m2	
Porch :	4.78 m2	
Total :	129.02 m2	13.88 sqs

Suits 8.50 M
Min. Block

Floor Plan
1:100



Front Elevation
1:100