



MULTIPLE HIA AWARD  
WINNING BUILDER

ORIONHOMES.COM.AU

**ORION**  
HOMES



**\$707,720**

**YARRA 29 at HARPLEY!**

3224 Ormiston Crescent, Werribee 3030

**Harpley**

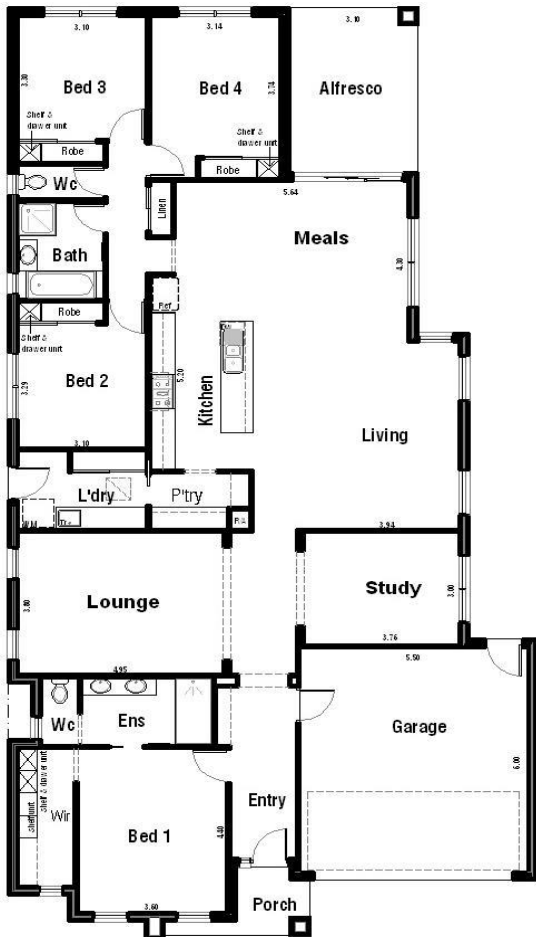
476m<sup>2</sup>



4	2	2

**House & Land Package Includes:**

- All Design Guidelines
- Choice of Facade's
- 2550 High Ceilings
- Double glazed windows
- Fly screens and window locks
- Blanco 900mm Appliances
- 20mm Stone Bench tops to kitchen
- Floor coverings bonus
- Coloured Concrete Driveways & Path
- **PLUS MUCH MORE!**



Images for illustration purposes only and may include examples of upgrade options along with landscaping, blinds and Décor light fittings. Site costs need to be confirmed with Orion Homes sales representative if they are fixed or an allowance has been made. Design guidelines are included however subject to developer's final approval. Pricing may vary subject to land availability.

**Bing Li**

0404 537 624

Bing.li@orionhomes.com.au

**DELUXE INCLUSIONS ARE JUST THE START**