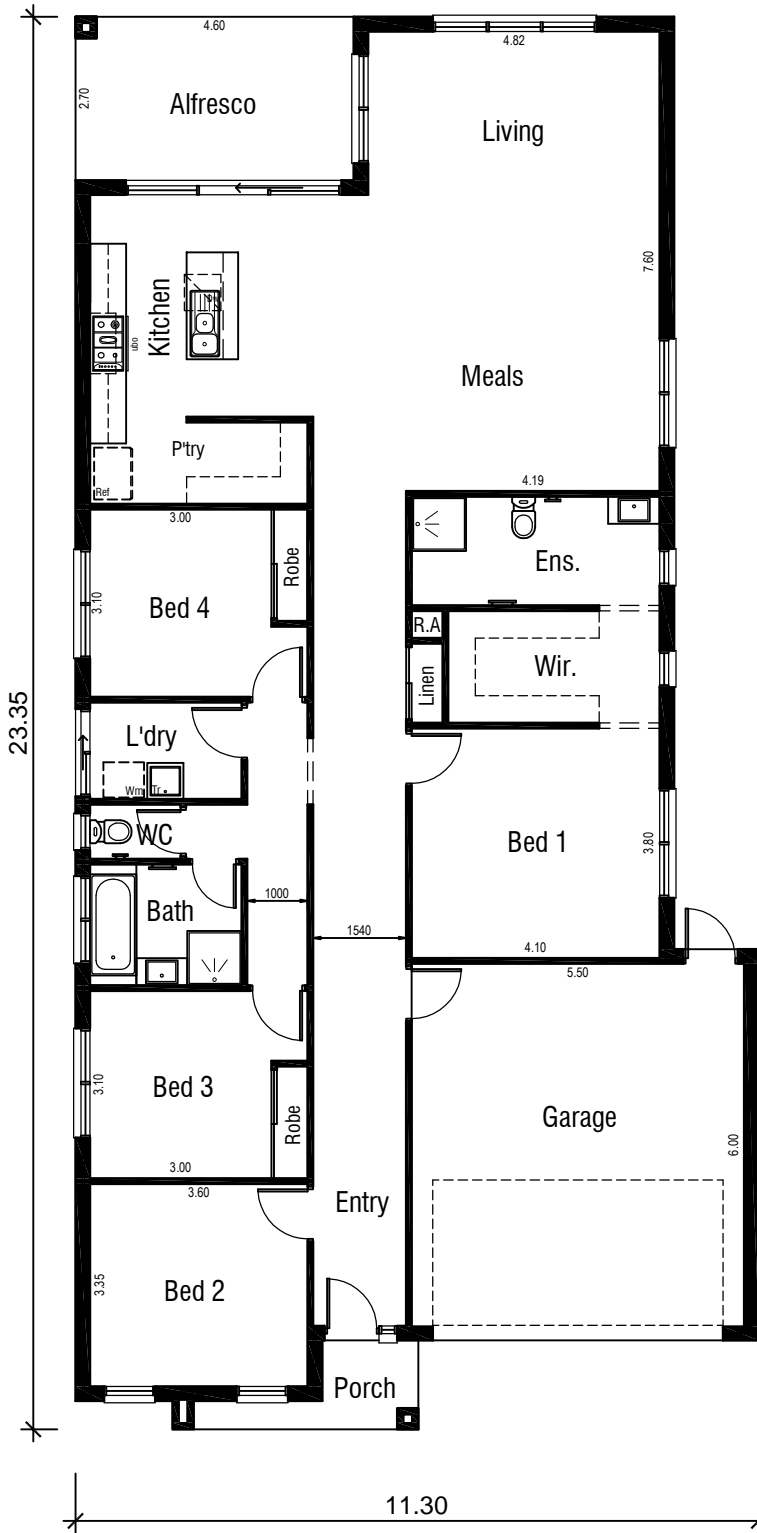


OSBORNE 25

SERIES 1

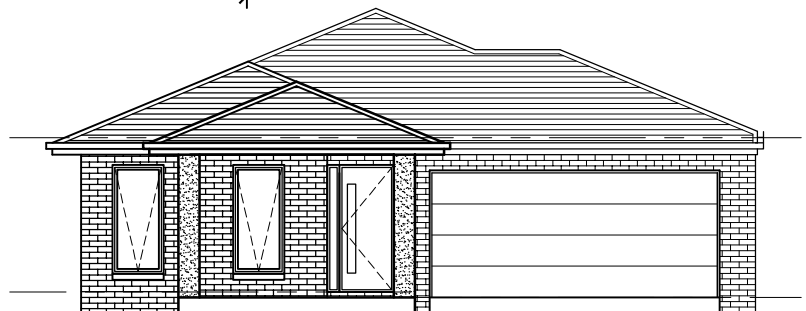


Areas Analysis :

Dwelling :	181.40 m2	19.53 sqs
Garage :	36.10 m2	
Porch :	3.34 m2	
Alfresco :	12.42 m2	
Total :	233.26 m2	25.11 sqs

Suits 14.00 M
Min. Block

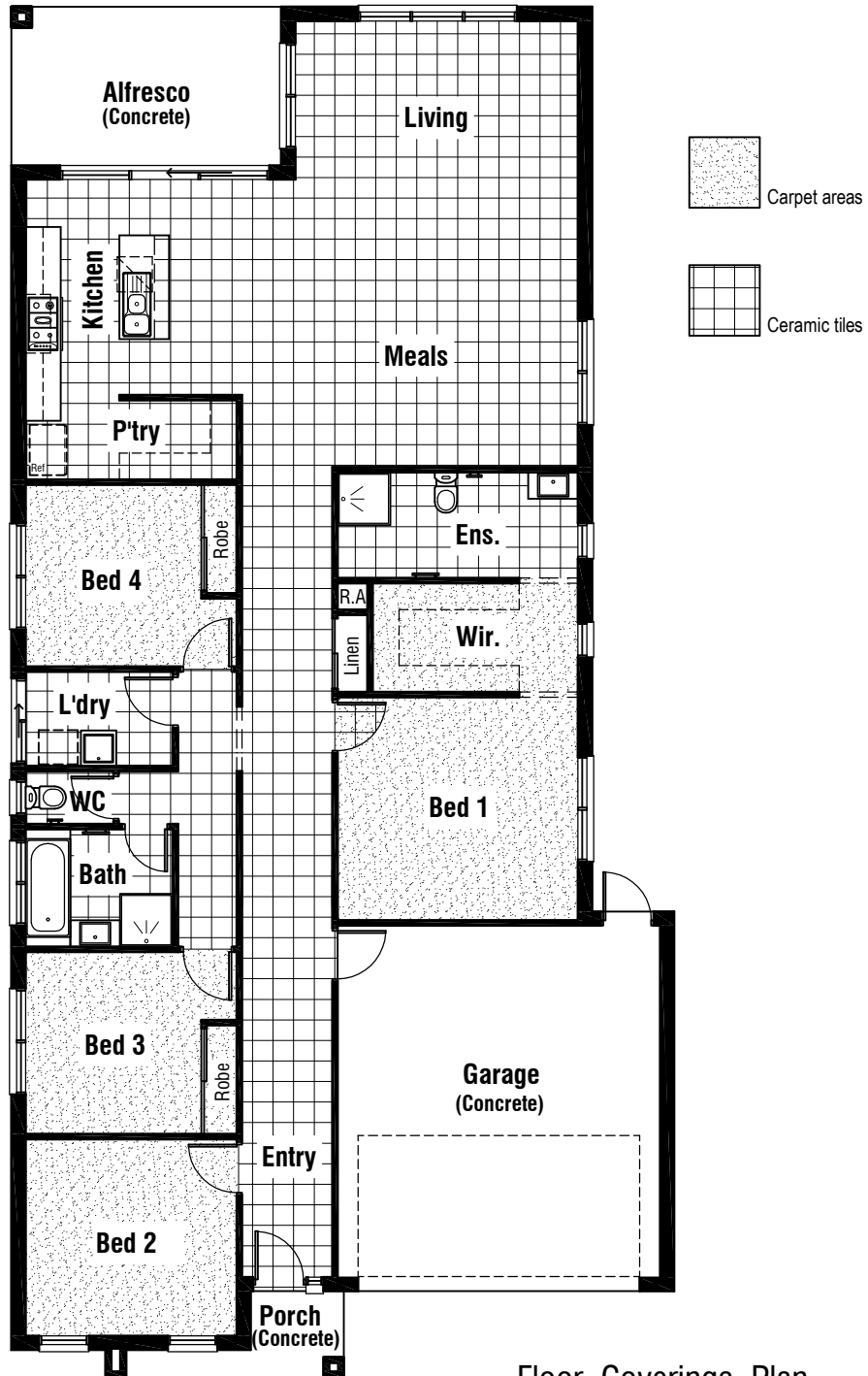
Floor Plan



Front Elevation

OSBORNE 25

SERIES 1





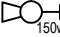







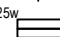


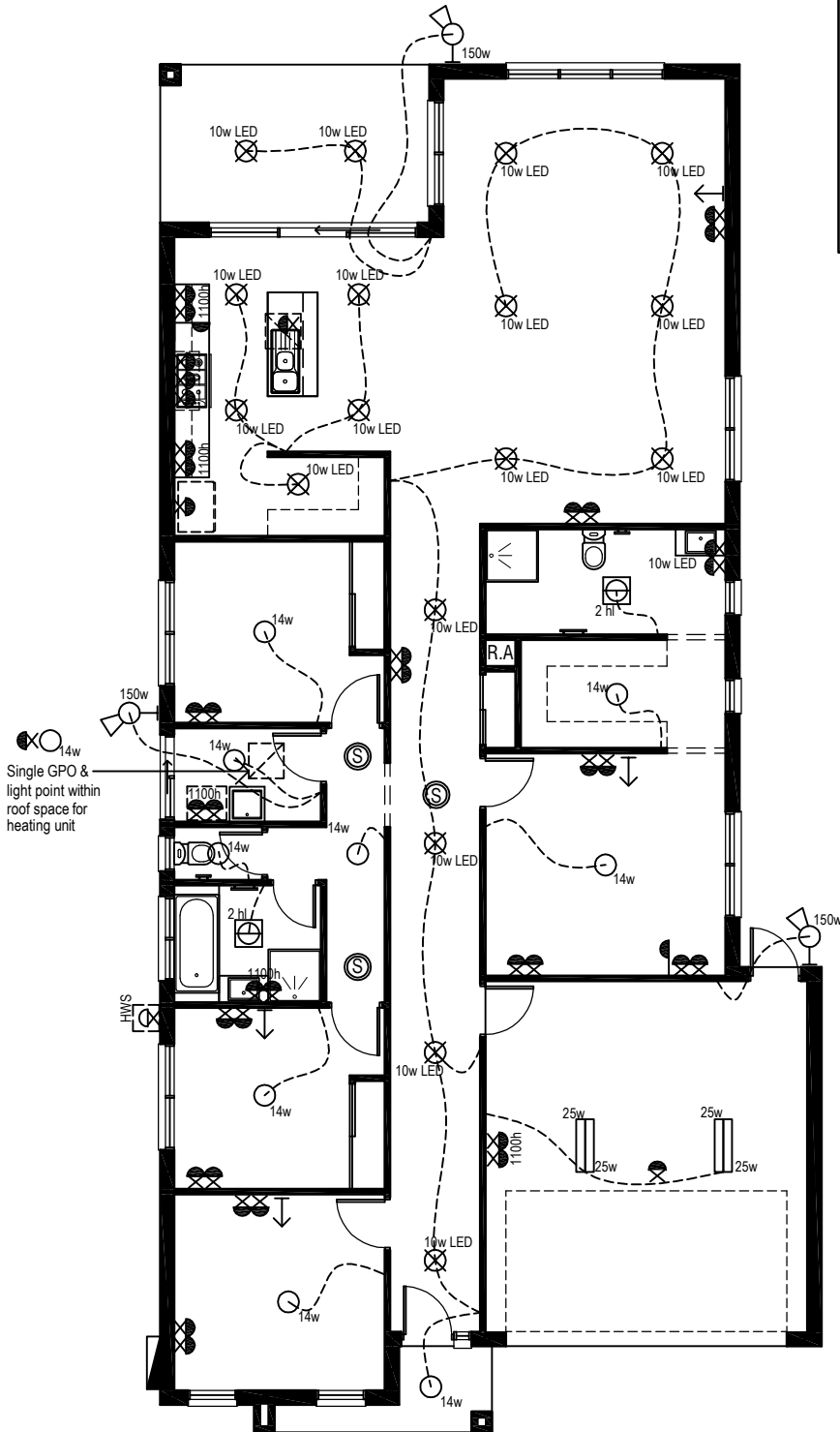
Floor Coverings Plan



OSBORNE 25 SERIES 1

Electrical Legend

-  Smoke Alarm
-  Electrical meter box
-  14w Ceiling mounted Oyster fitting with 14 watt globe
-  10w LED Ceiling mounted downlight 10 watt L.E.D Globe
-  150w Wall mounted external flood light with 150 watt globe
-  2 hl 3 in 1 - Exhaust Fan with 'draft stopper', Light & 2 x Heat globes
-  14w Exhaust Fan & Light - with 'draft stopper'
-  Weatherproof External Double GPO
-  Double GPO
-  Single GPO
-  TV point
-  Phone point
-  25w Ceiling mounted double fluo light with 25 watt globe



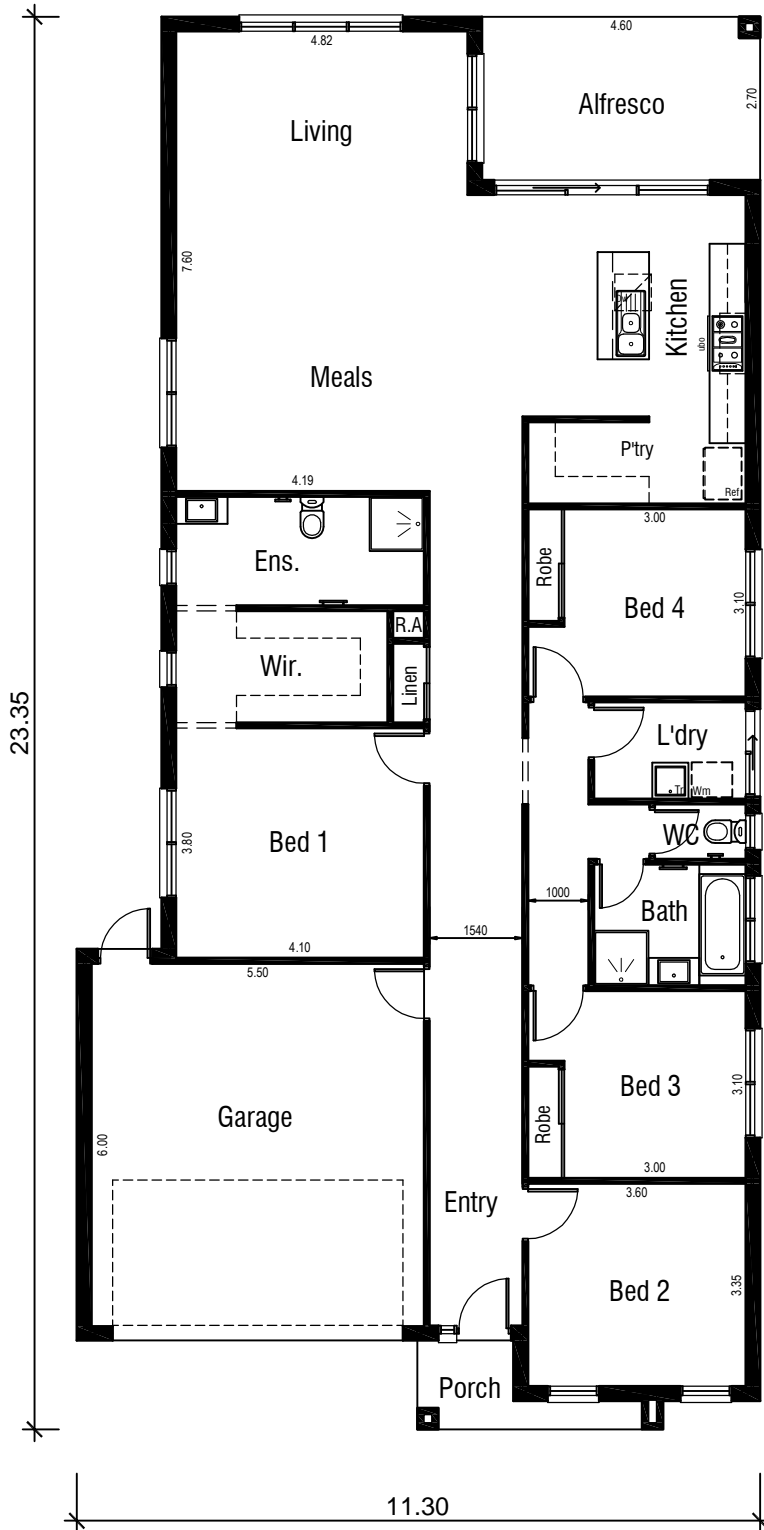
Wattage Allowance

Internal of dwelling - (Class 1)	
Proposed total wattage of light fittings:	292.00 w
Max allowable wattage:	906.95 w
Internal of garage - (Class 10)	
Proposed total wattage of light fittings:	100.00 w
Max allowable wattage:	108.30 w
Porch, Alfresco, Balconies etc.. - (Class 1)	
Proposed total wattage of light fittings:	30.00 w
Max allowable wattage:	63.08 w

Electrical Plan

OSBORNE 25

SERIES 1

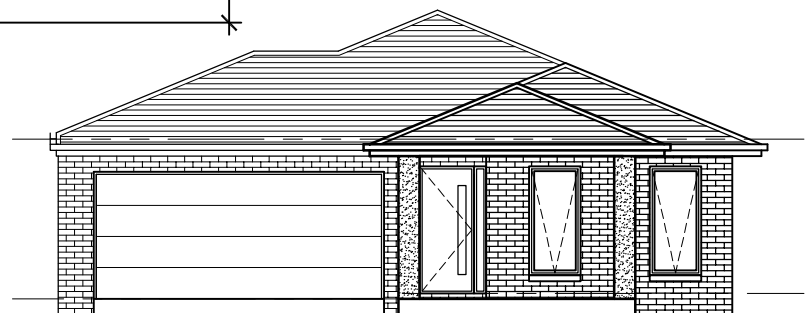


Areas Analysis :

Dwelling :	181.40 m ²	19.53 sqs
Garage :	36.10 m ²	
Porch :	3.34 m ²	
Alfresco :	12.42 m ²	
Total :	233.26 m²	25.11 sqs

Suits 14.00 M
Min. Block

Floor Plan



Front Elevation