

YARRA 29



AS DISPLAYED AT
SALTWATER COAST

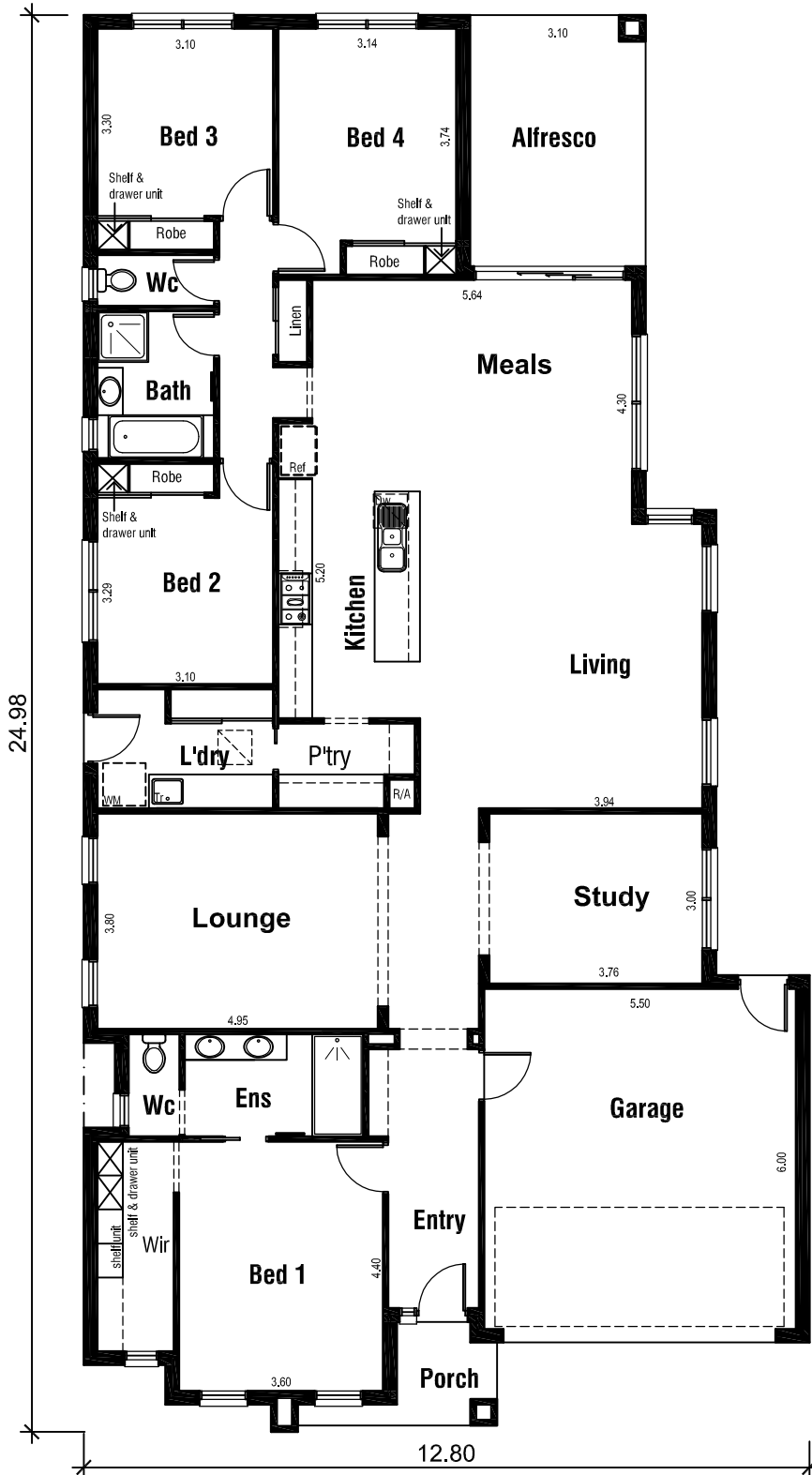
NEWPORT FACADE
ON DISPLAY

Areas Analysis :

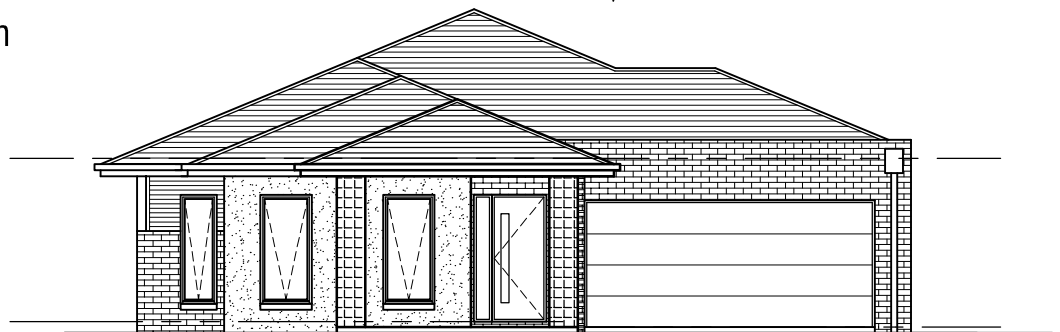
Dwelling :	214.72 m2	23.11 sqs
Garage :	36.24 m2	
Porch :	3.75 m2	
Alfresco :	13.73 m2	

Total : 268.44 m2 28.89 sqs

Suits 14.0 M
Min. Block



Floor Plan

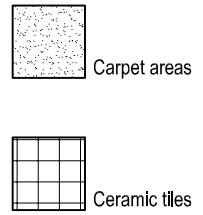
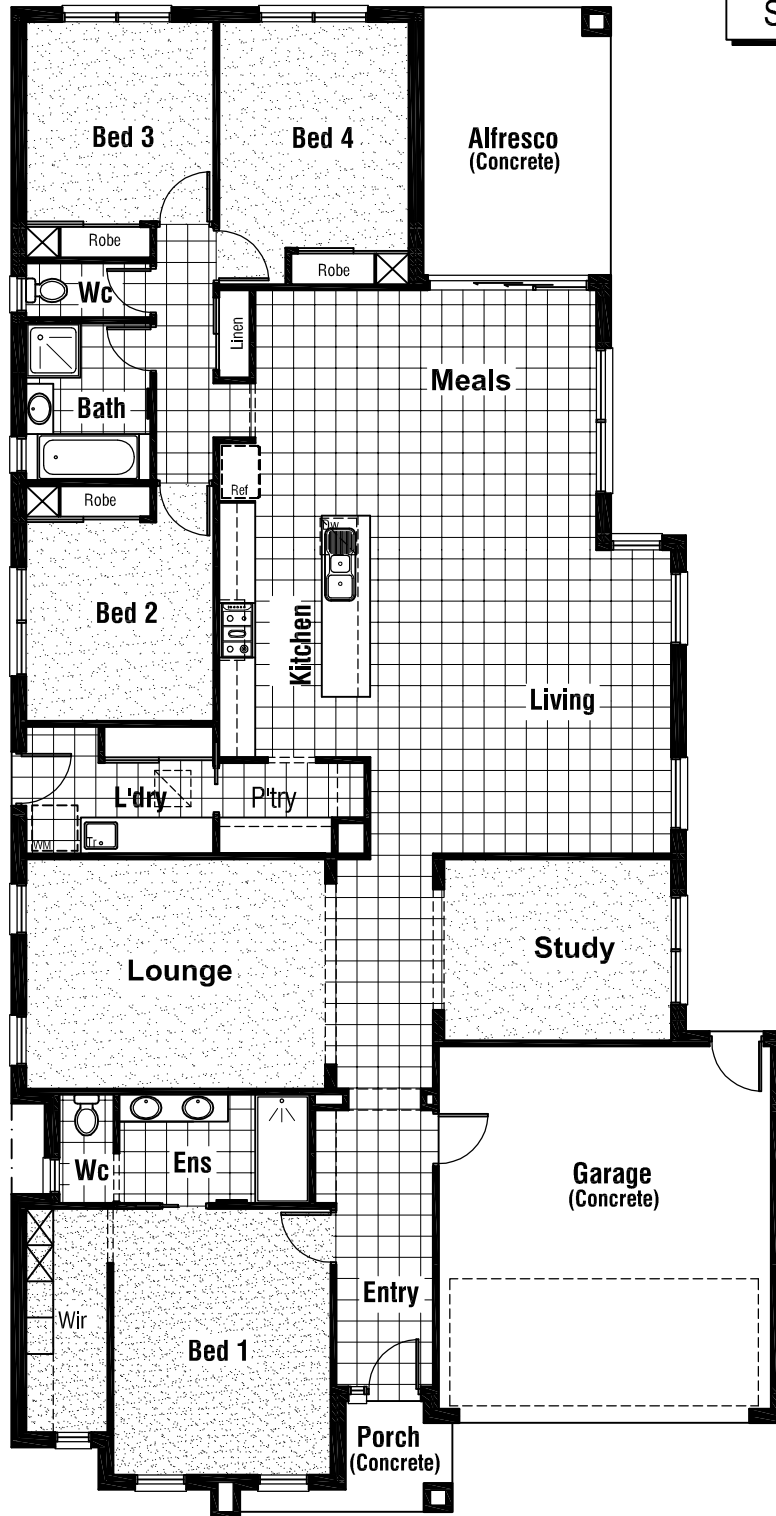


Front Elevation

YARRA 29



AS DISPLAYED AT
SALTWATER COAST




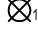
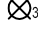
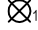
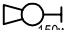






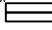


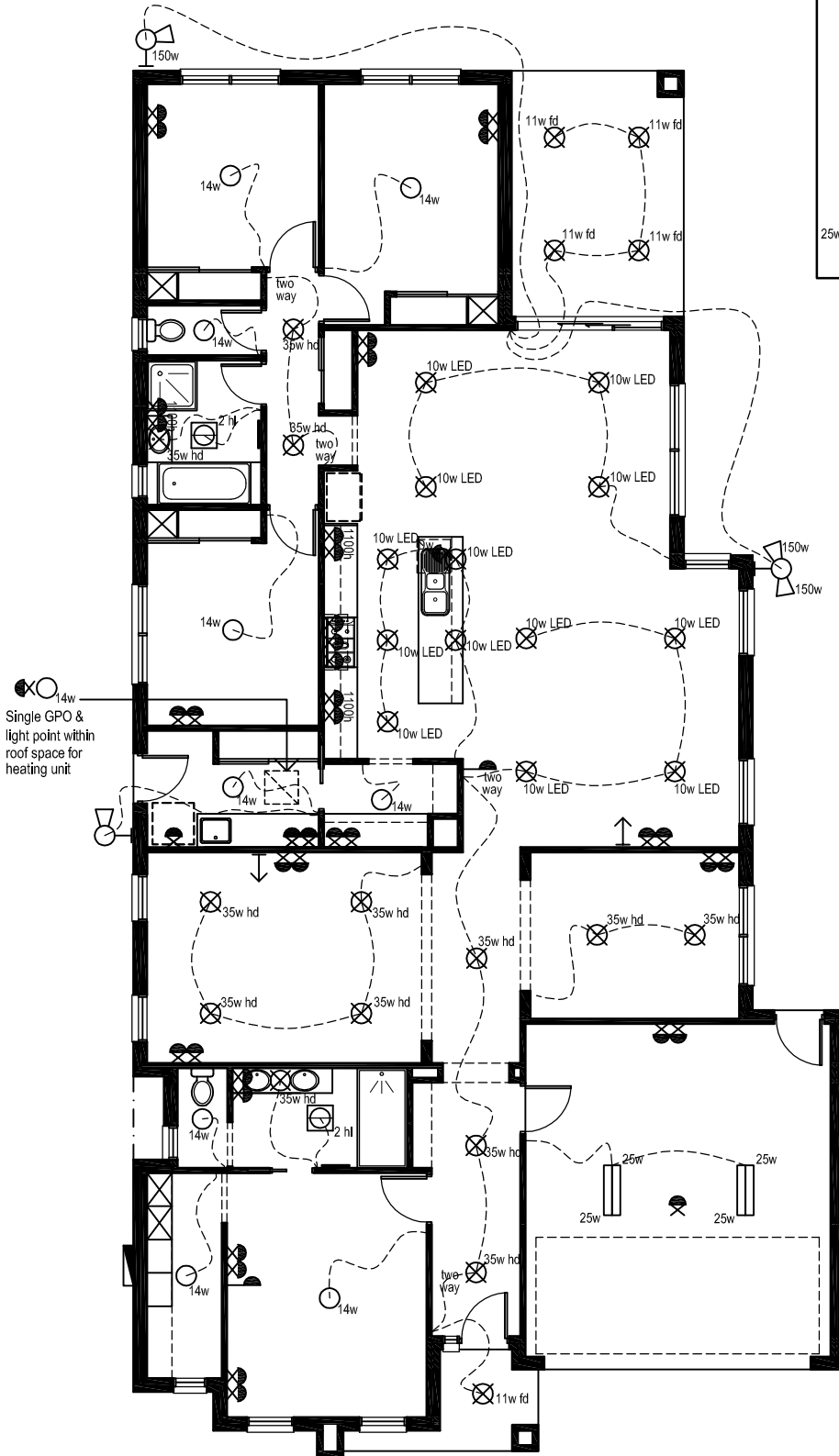
Floor Coverings Plan



YARRA 29

Electrical Legend

-  Smoke Alarm
-  Electrical meter box
-  14w Ceiling mounted Oyster fitting with 14 watt globe
-  11w fd Ceiling mounted 11 watt fluo light
-  35w hd Ceiling mounted 70mm downlight 35 watt Halogen light
-  10w LED Ceiling mounted downlight 10 watt L.E.D Globe
-  150w Wall mounted external flood light with 150 watt globe
-  2 hl 3 in 1 - Exhaust Fan with 'draft stopper', Light & 2 x Heat globes
-  Weatherproof External Double GPO
-  Double GPO
-  Single GPO
-  TV point
-  Phone point
-  25w Ceiling mounted double fluo light with 25 watt globe



Wattage Allowance

Internal of dwelling - (Class 1)	
Proposed total wattage of light fittings:	725.00 w
Max allowable wattage:	1073.60 w
Internal of garage - (Class 10)	
Proposed total wattage of light fittings:	100.00 w
Max allowable wattage:	108.72 w
Porch, Alfresco, Balconies etc.. - (Class 1)	
Proposed total wattage of light fittings:	55.00 w
Max allowable wattage:	69.92 w

YARRA 29



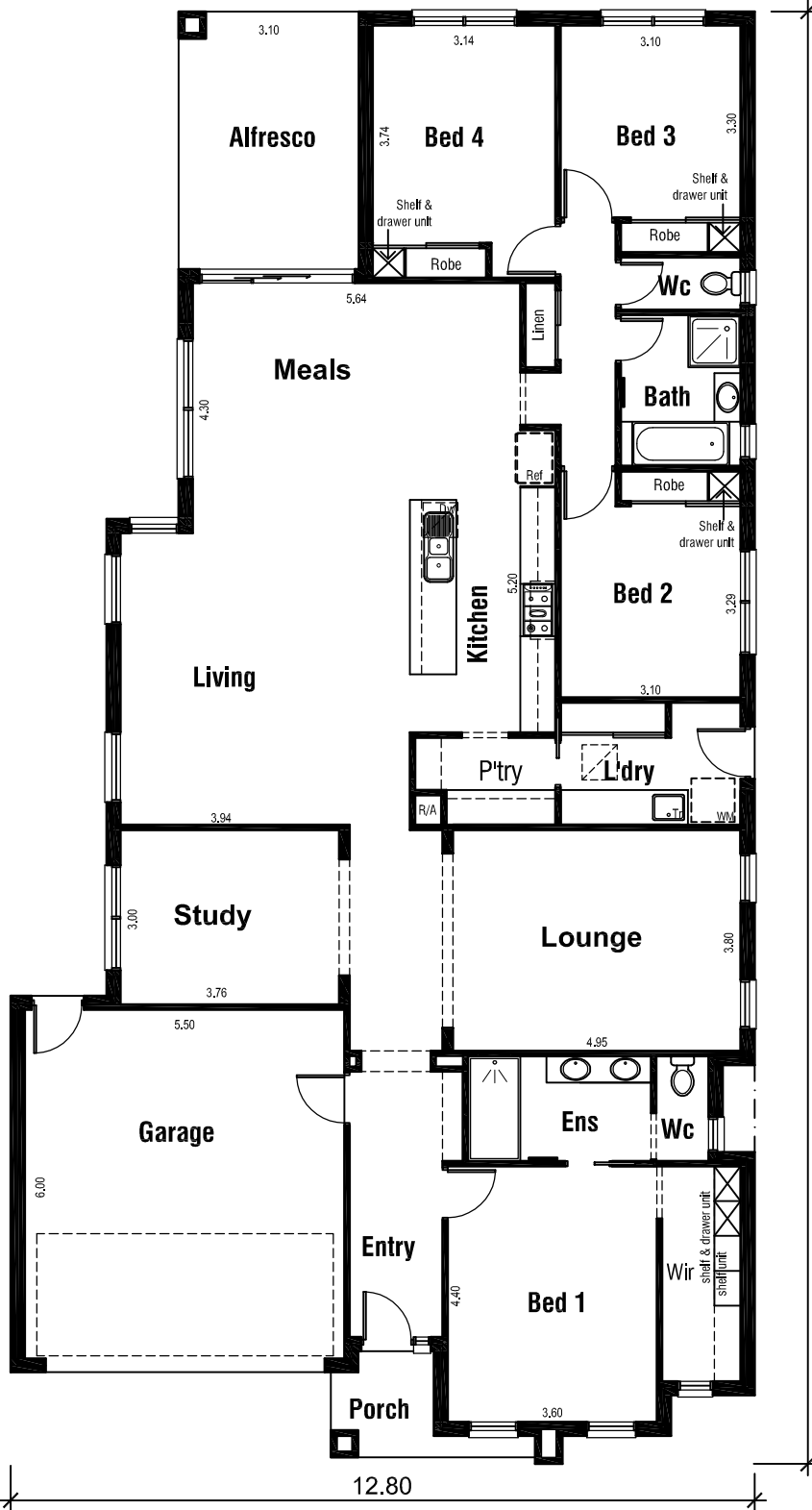
AS DISPLAYED AT
SALTWATER COAST

NEWPORT FACADE
ON DISPLAY

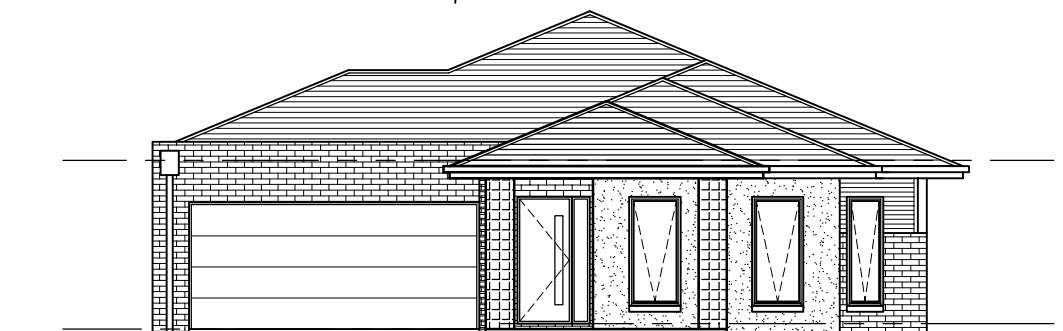
Areas Analysis :

Dwelling :	214.72 m2	23.11 sqs
Garage :	36.24 m2	
Porch :	3.75 m2	
Alfresco :	13.73 m2	
Total :	268.44 m2	28.89 sqs

Suits 14.0 M
Min. Block



Floor Plan



Front Elevation