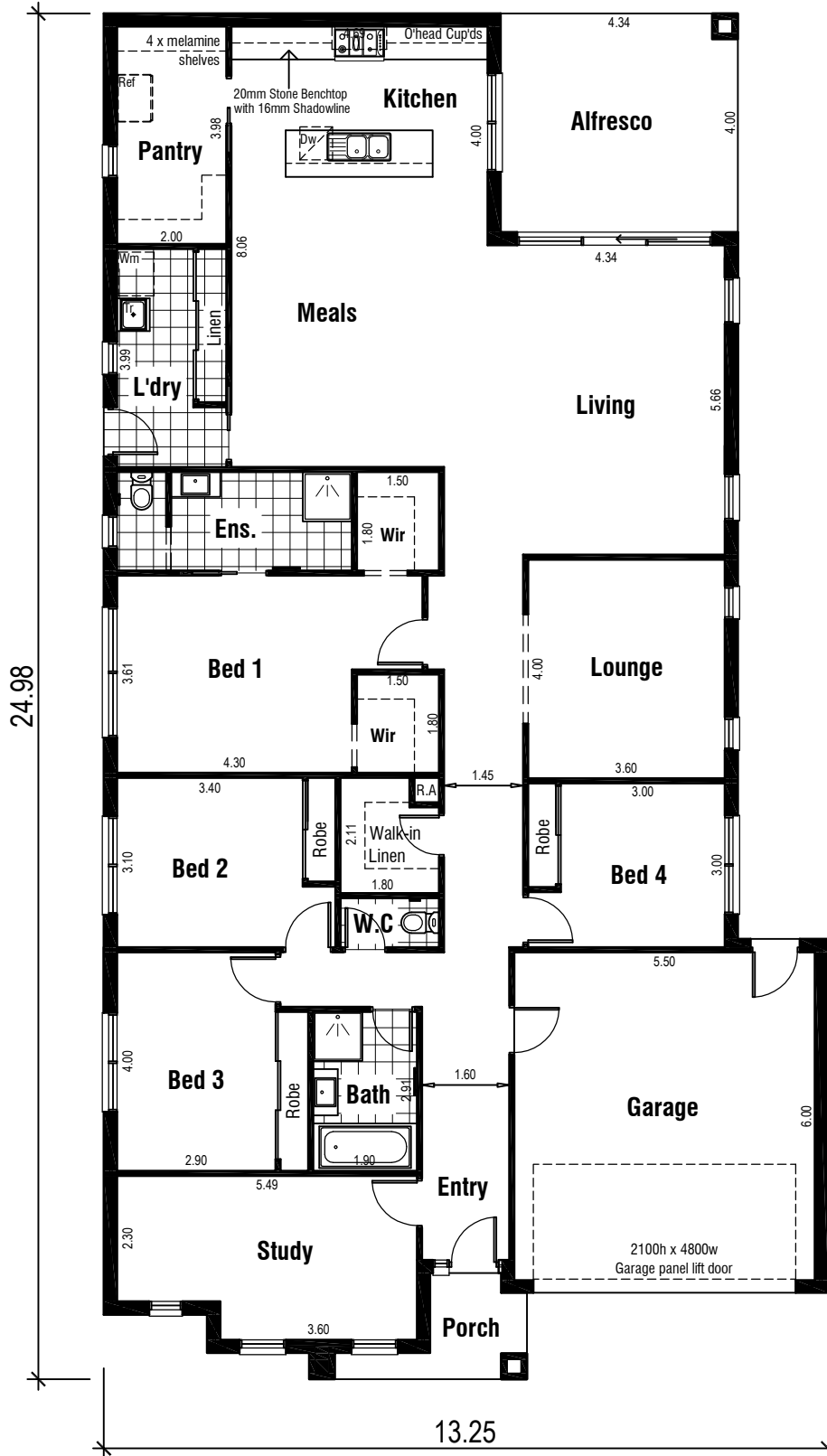


YARRA 31 MK 2



Areas Analysis :

Dwelling :	233.52 m2	25.14 sqs
Garage :	36.24 m2	
Porch :	4.10 m2	
Alfresco :	17.36 m2	
Total :	291.22 m2	31.35 sqs

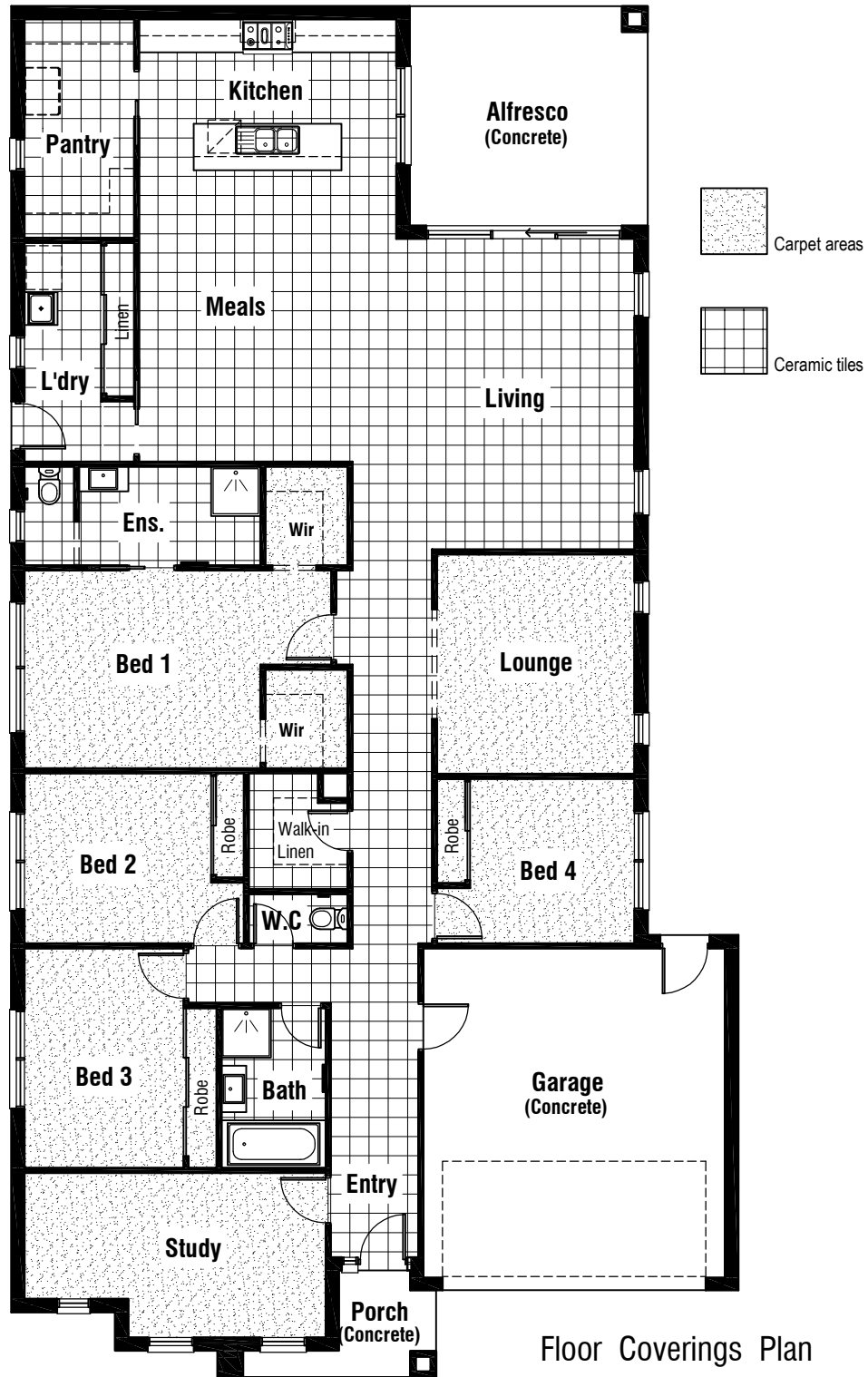
Suits 14.60 M
Min. Block

Floor Plan



Front Elevation

YARRA 31 MK2



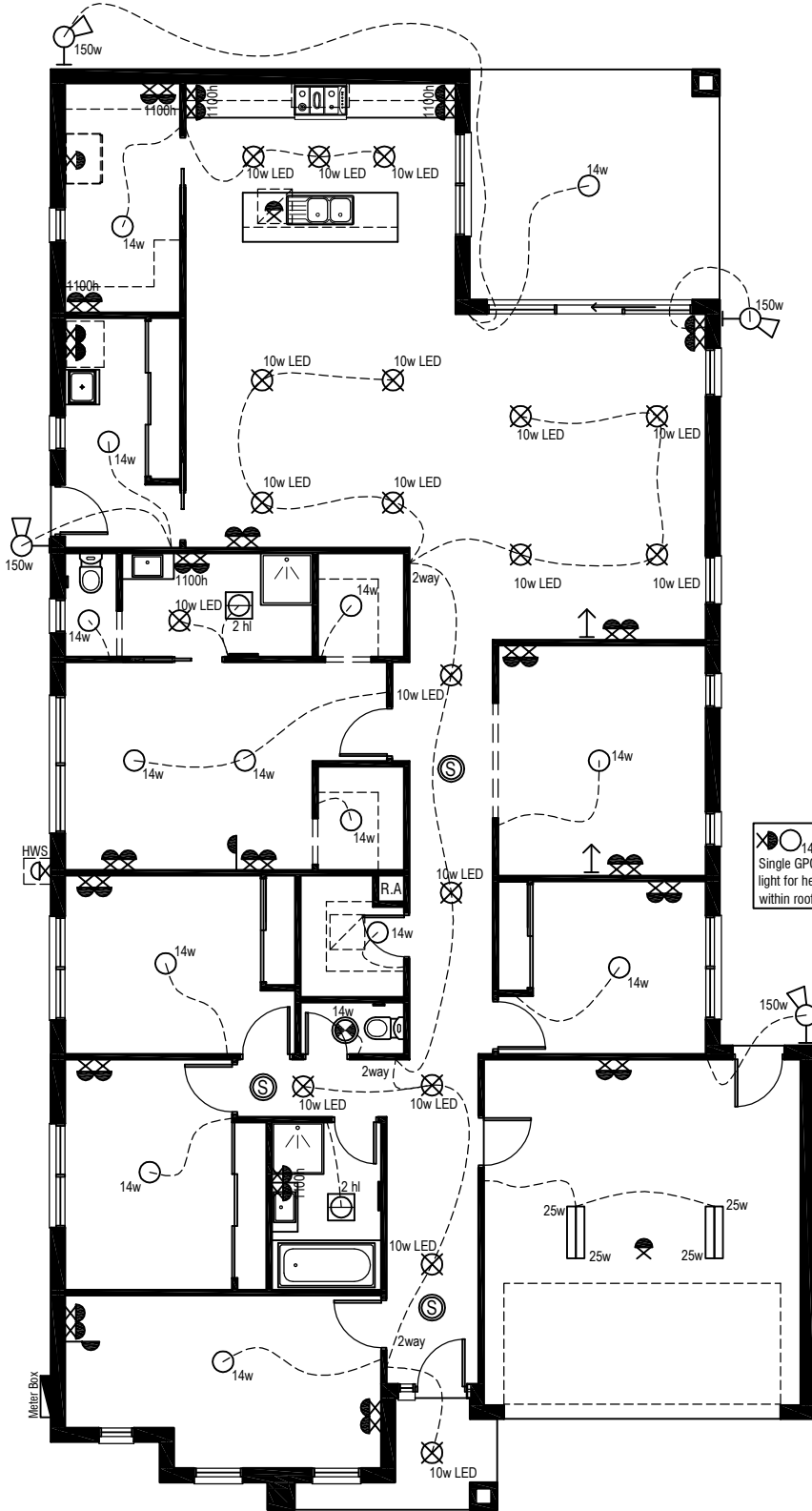
Floor Coverings Plan



YARRA 31 MK2

Electrical Legend

- Smoke Alarm
- Electrical meter box
- 14w Ceiling mounted Oyster fitting with 14 watt globe
- 10w LED Ceiling mounted downlight 10 watt L.E.D Globe
- 150w Wall mounted external flood light with 150 watt globe
- 3 in 1 - Exhaust Fan with 'draft stopper', Light & 2 x Heat globes
- 14w Exhaust Fan & Light - with 'draft stopper'
- Weatherproof External Double GPO
- Double GPO
- Single GPO
- TV point
- Phone point
- 25w Ceiling mounted double fluro light with 25 watt globe

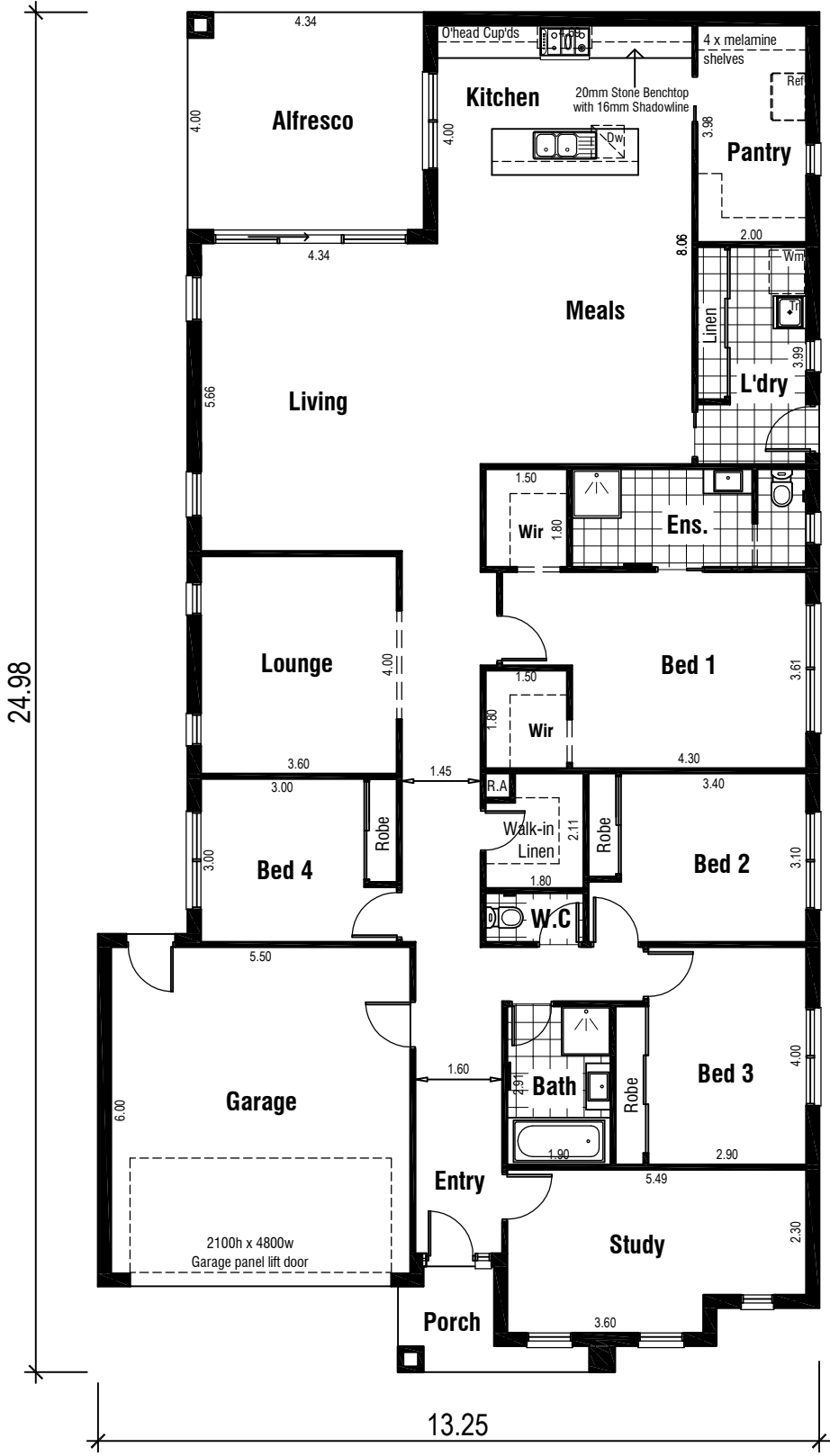


14w Single GPO & batten light for heating unit within roof space

Wattage Allowance	
Internal of dwelling - (Class 1)	
Proposed total wattage of light fittings:	380.00 w
Max allowable wattage:	1167.60 w
Internal of garage - (Class 10)	
Proposed total wattage of light fittings:	100.00 w
Max allowable wattage:	108.72 w
Porch, Alfresco, Balconies etc.. - (Class 1)	
Proposed total wattage of light fittings:	24.00 w
Max allowable wattage:	85.84 w

Proposed Electrical Plan

YARRA 31 MK 2



Areas Analysis :

Dwelling :	233.52 m2	25.14 sqs
Garage :	36.24 m2	
Porch :	4.10 m2	
Alfresco :	17.36 m2	
Total :	291.22 m2	31.35 sqs

Suits 14.60 M
Min. Block

Floor Plan



Front Elevation