

# YARRA 30



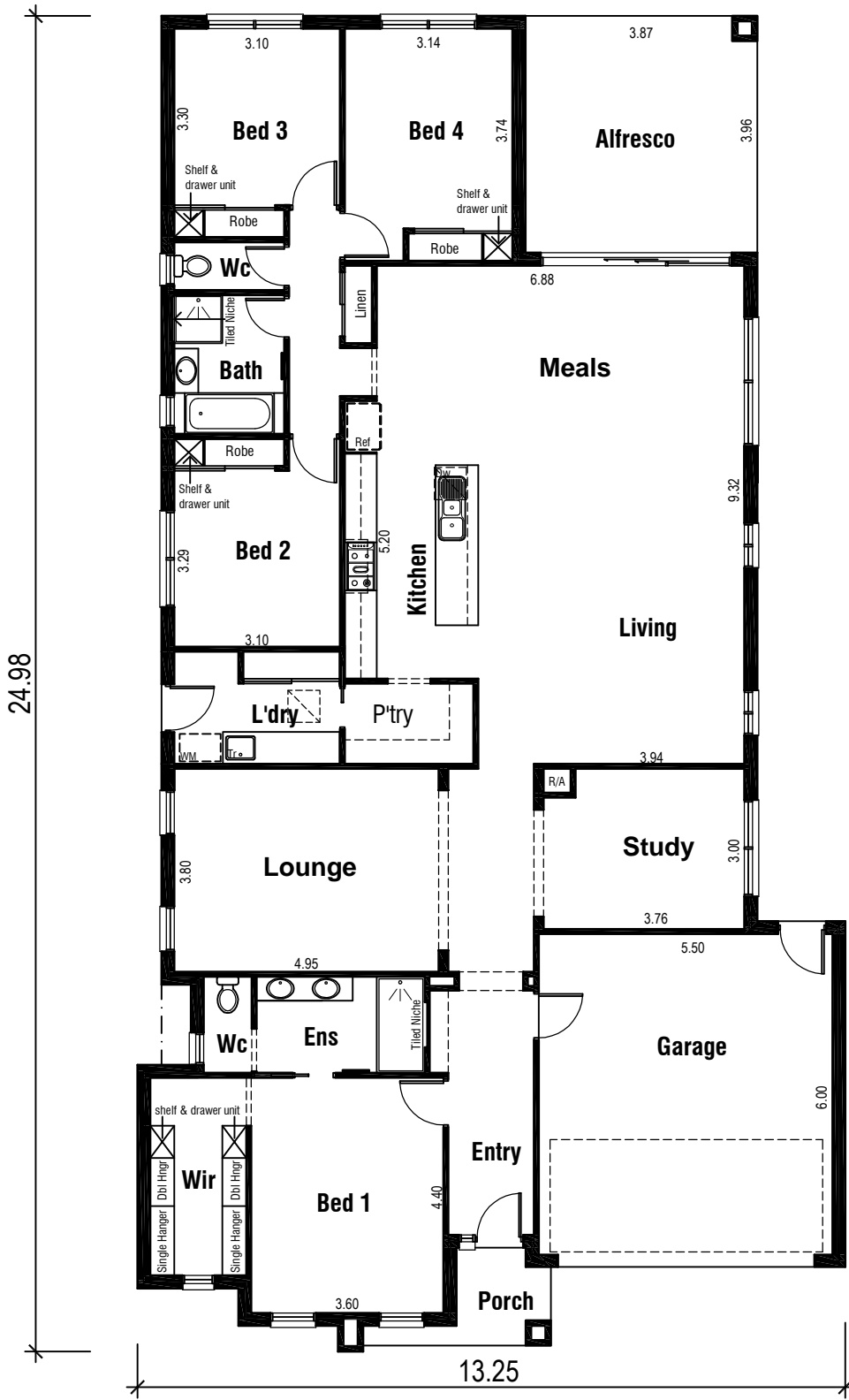
AS DISPLAYED AT  
ROSENTHAL, SUNBURY

MEADOWS FACADE  
ON DISPLAY

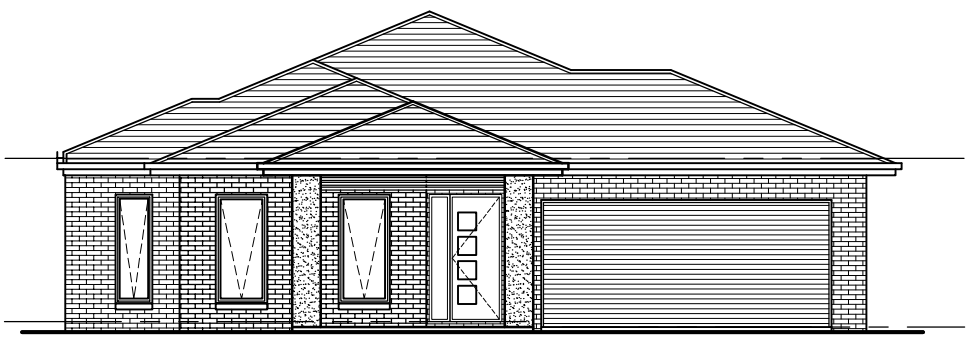
Areas Analysis :

Dwelling :	221.99 m2	23.90 sqs
Garage :	36.24 m2	
Porch :	3.72 m2	
Alfresco :	19.23 m2	
<b>Total :</b>	<b>281.18 m2</b>	<b>30.27 sqs</b>

Suits 16.0 M  
Min. Block



Floor Plan

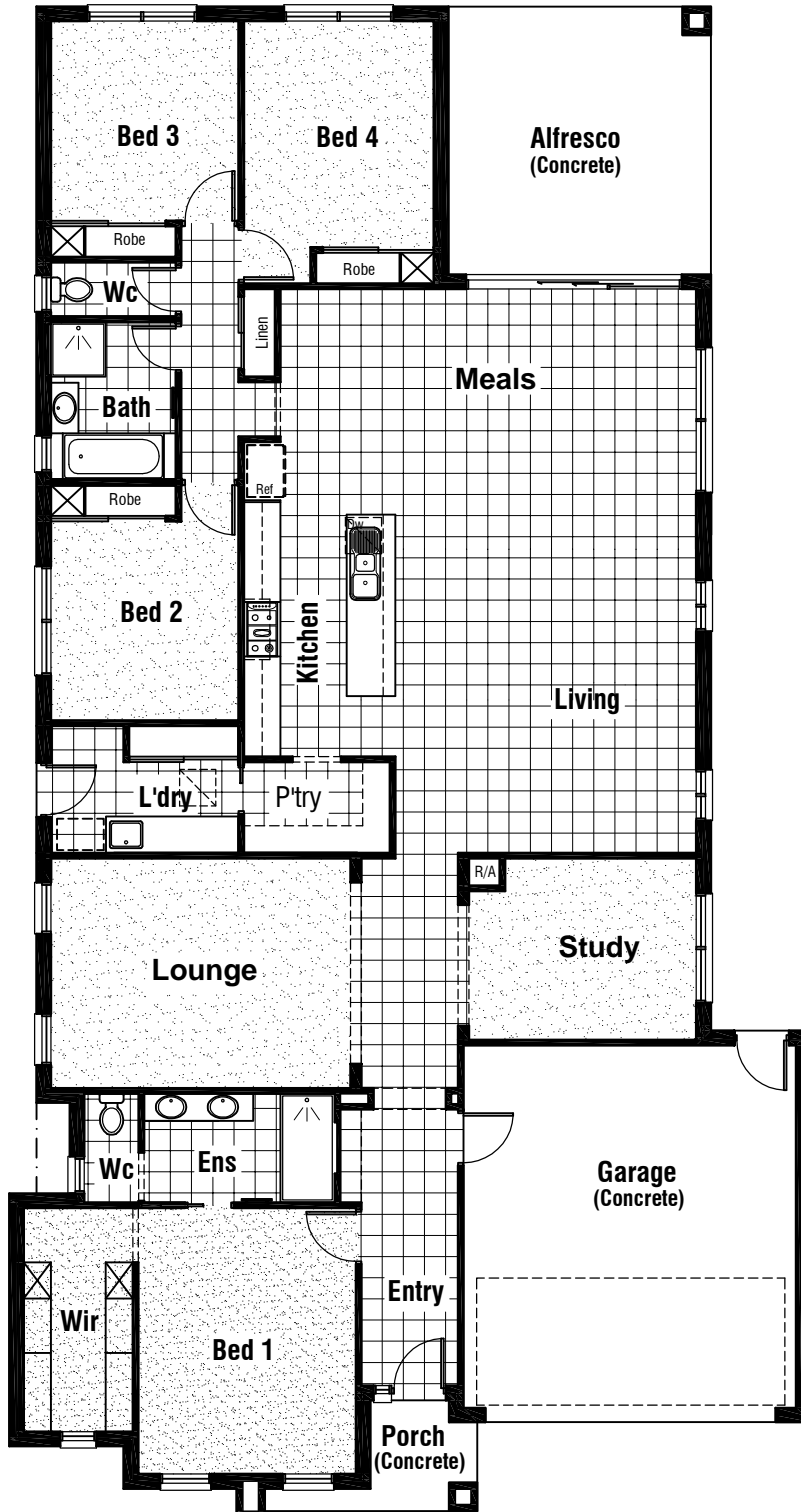


Front Elevation

# YARRA 30



AS DISPLAYED AT  
ROSENTHAL, SUNBURY





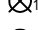
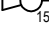









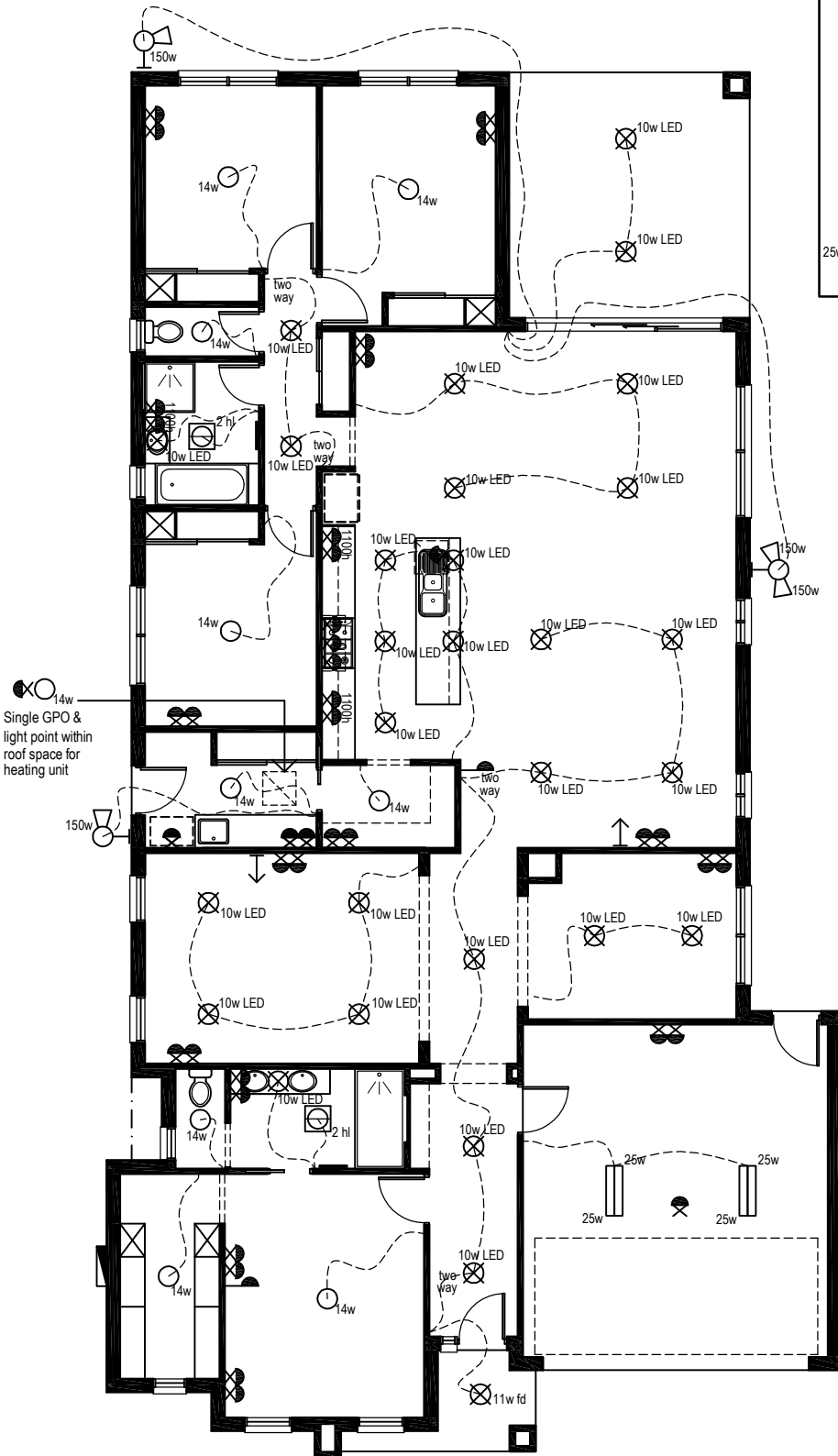
Floor Coverings Plan



# YARRA 30

## Electrical Legend

-  Smoke Alarm
-  Electrical meter box
-  14w Ceiling mounted Oyster fitting with 14 watt globe
-  11w fd Ceiling mounted 11 watt fluro light
-  10w LED Ceiling mounted downlight 10 watt L.E.D Globe
-  150w Wall mounted external flood light with 150 watt globe
-  2 hl 3 in 1 - Exhaust Fan with 'draft stopper', Light & 2 x Heat globes
-  Weatherproof External Double GPO
-  Double GPO
-  Single GPO
-  TV point
-  Phone point
-  25w Ceiling mounted double fluro light with 25 watt globe



### Wattage Allowance

Internal of dwelling - (Class 1)	
Proposed total wattage of light fittings:	400.00 w
Max allowable wattage:	1109.95 w
Internal of garage - (Class 10)	
Proposed total wattage of light fittings:	100.00 w
Max allowable wattage:	108.72 w
Porch, Alfresco, Balconies etc.. - (Class 1)	
Proposed total wattage of light fittings:	31.00 w
Max allowable wattage:	91.80 w

Single GPO & light point within roof space for heating unit

Proposed Electrical Plan

# YARRA 30

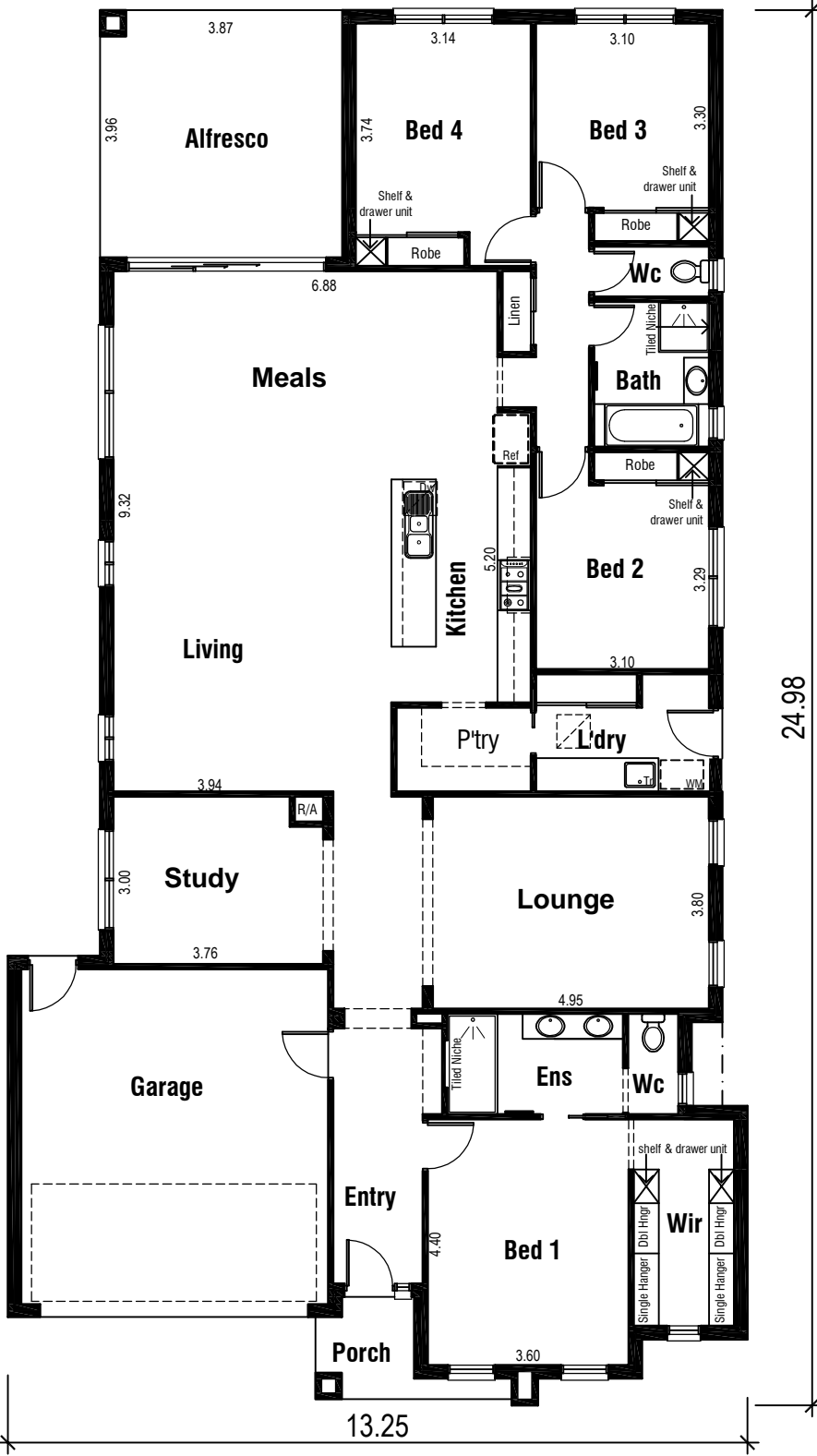


AS DISPLAYED AT  
ROSENTHAL, SUNBURY

MEADOWS FACADE  
ON DISPLAY

**Areas Analysis :**

Dwelling :	221.99 m2	23.90 sqs
Garage :	36.24 m2	
Porch :	3.72 m2	
Alfresco :	19.23 m2	
<b>Total :</b>	<b>281.18 m2</b>	<b>30.27 sqs</b>



Suits 16.0 M  
Min. Block

Floor Plan



Front Elevation