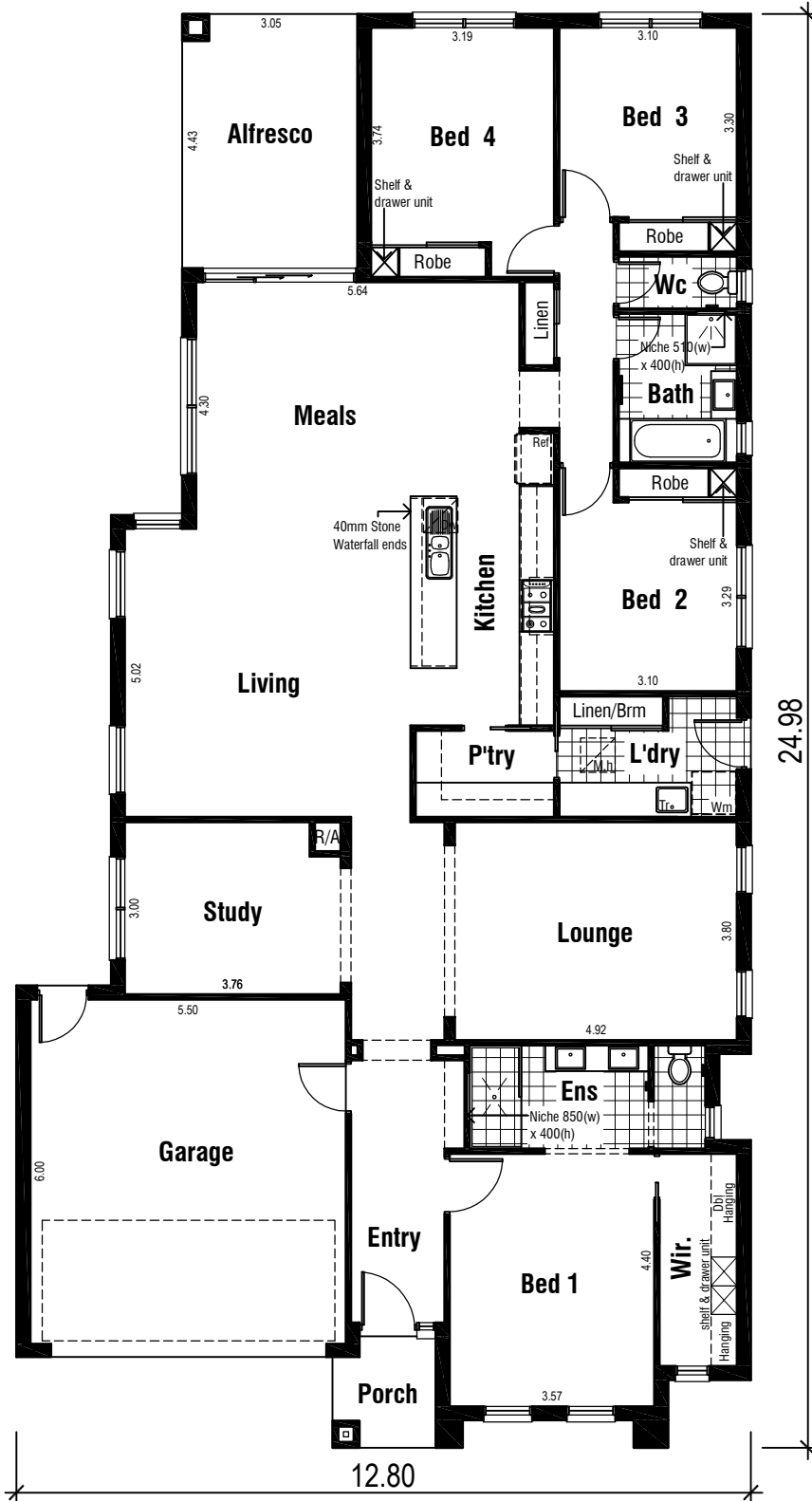


# HARPLEY YARRA 29



AS DISPLAYED AT  
BILLEROY WAY

KINGSVILLE FACADE  
ON DISPLAY



Areas Analysis :

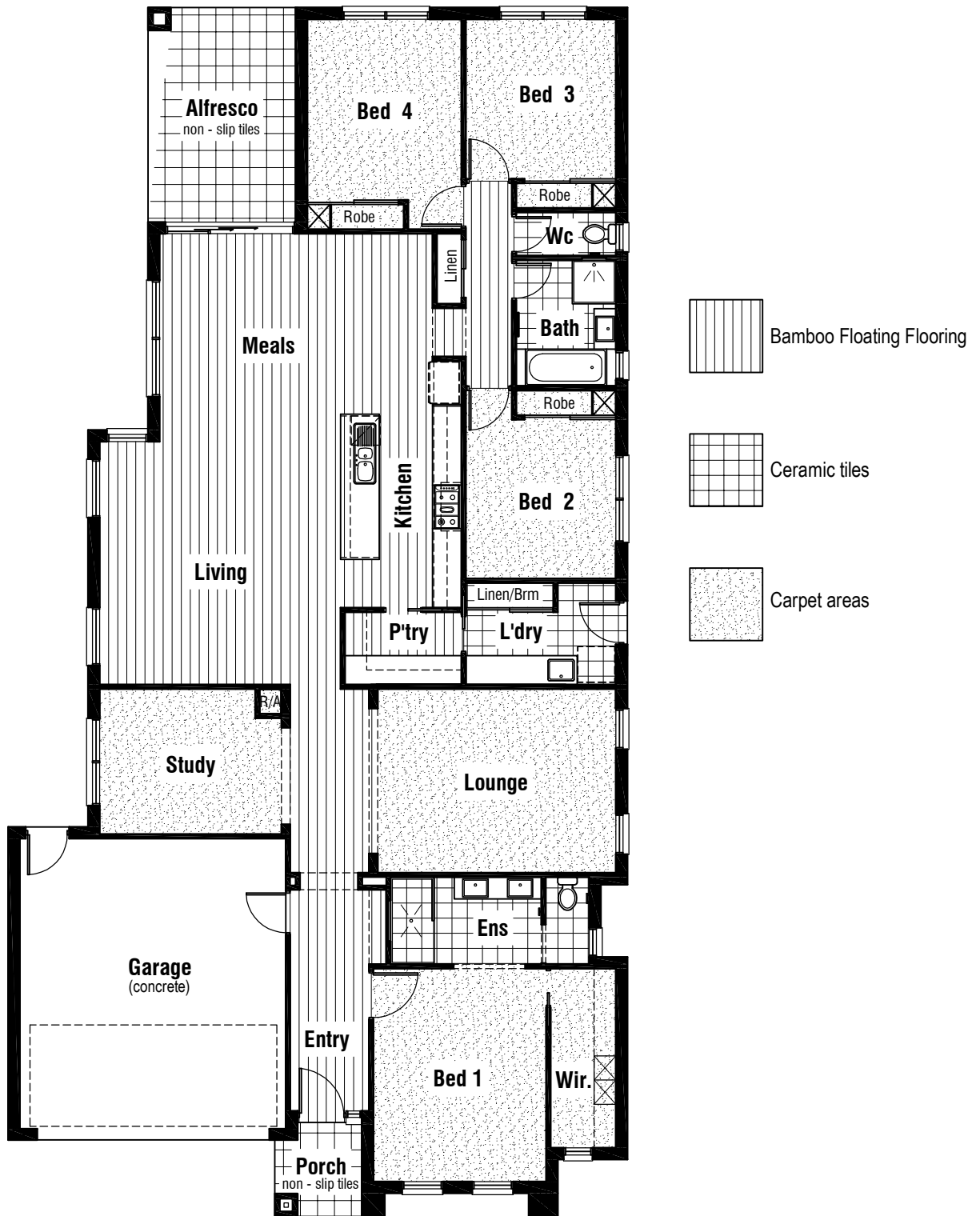
Dwelling :	215.25 m2	23.17 sqs
Garage :	36.24 m2	
Porch :	3.32 m2	
Alfresco :	13.51 m2	
<b>Total :</b>	<b>268.32 m2</b>	<b>28.88 sqs</b>

Suits 14.00 M  
Min. Block



Front Elevation

# HARPLEY YARRA 29






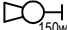







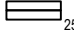


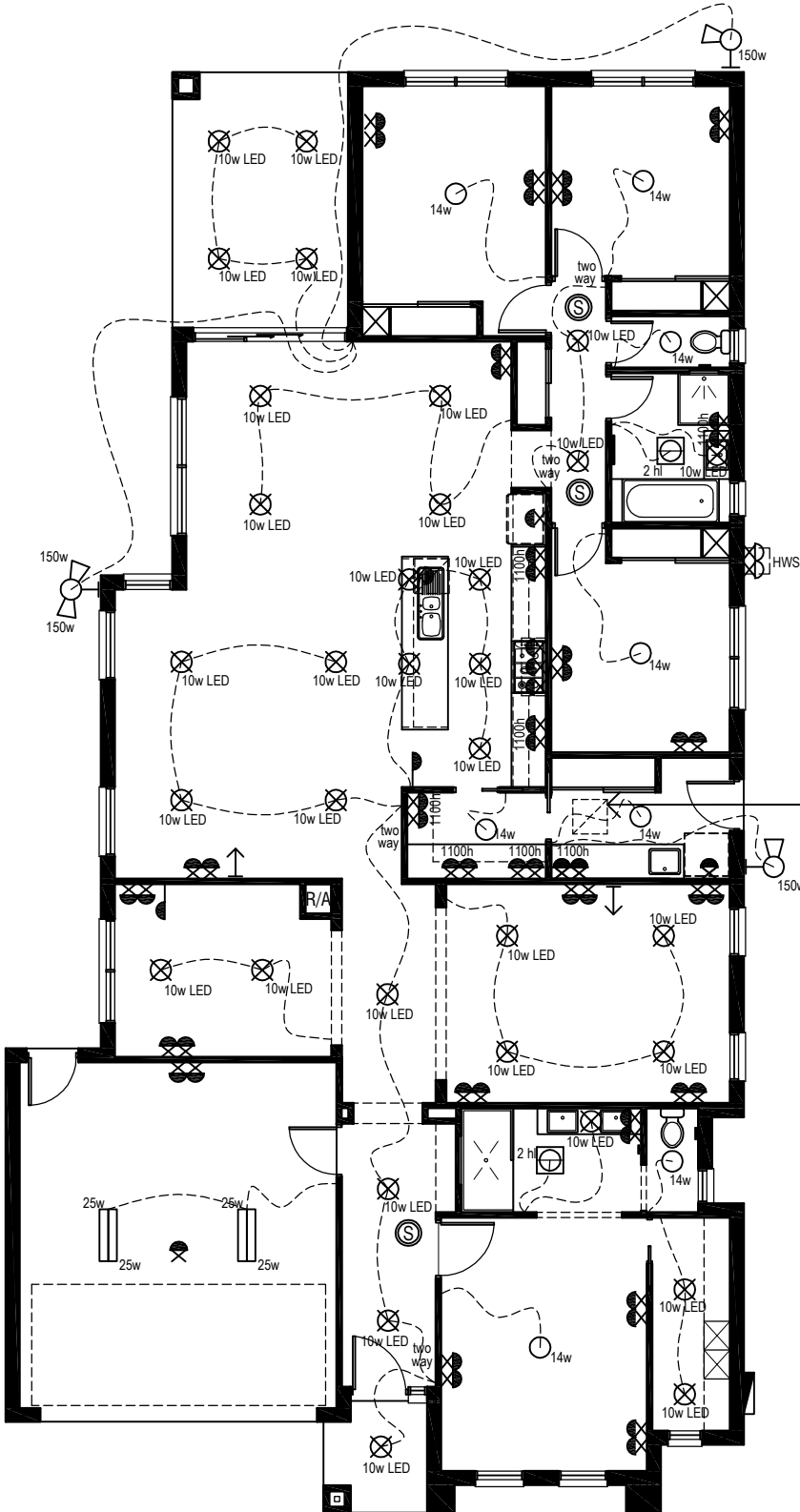
Floor Coverings Plan



# HARPLEY YARRA 29


## Electrical Legend

-  Smoke Alarm
-  Electrical meter box
-  14w Ceiling mounted Oyster fitting with 14 watt globe
-  10w led Ceiling mounted 10 watt led pendant light
-  10w led Ceiling mounted downlight 10 watt L.E.D Globe
-  150w Wall mounted external flood light with 150 watt globe
-  Wall mounted light outlet
-  2 hl 3 in 1 - Exhaust Fan with 'draft stopper', Light & 2 x Heat globes
-  Weatherproof External Double GPO
-  Double GPO
-  Single GPO
-  TV point
-  Phone point
-  25w 25w Ceiling mounted double fluoro light with 25 watt globe



### Wattage Allowance

Internal of dwelling - (Class 1)	
Proposed total wattage of light fittings:	506.00 w
Max allowable wattage:	1076.25 w
Internal of garage - (Class 10)	
Proposed total wattage of light fittings:	100.00 w
Max allowable wattage:	108.72 w
Porch, Alfresco, Balconies etc.. - (Class 1)	
Proposed total wattage of light fittings:	50.00 w
Max allowable wattage:	67.32 w

 14w Single GPO & batten light for heating/cooling unit within roof space

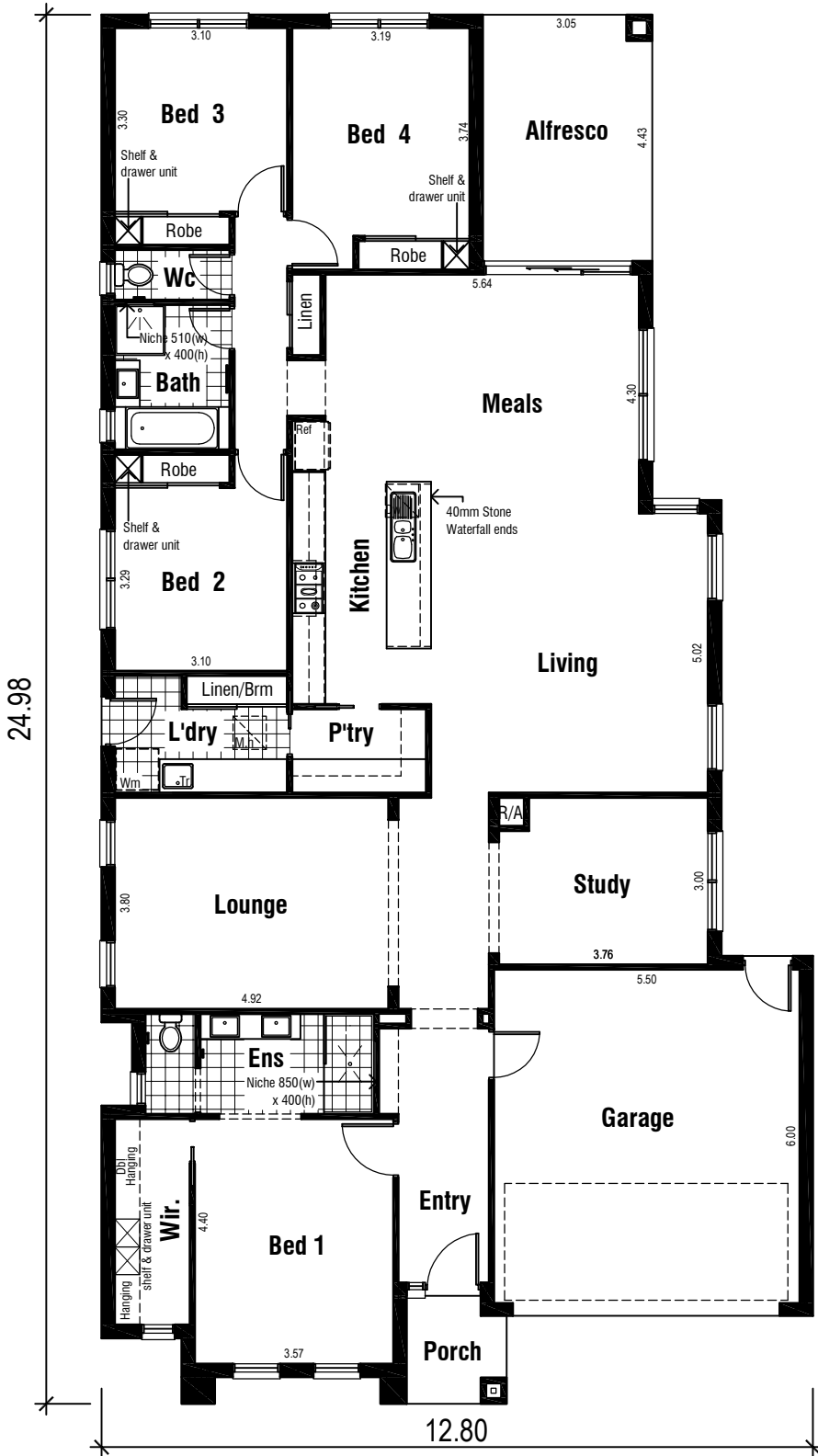
Proposed Electrical Plan

# HARPLEY YARRA 29



AS DISPLAYED AT  
BILLEROY WAY

KINGSVILLE FACADE  
ON DISPLAY



Areas Analysis :

Dwelling :	215.25 m2	23.17 sqs
Garage :	36.24 m2	
Porch :	3.32 m2	
Alfresco :	13.51 m2	
<b>Total :</b>	<b>268.32 m2</b>	<b>28.88 sqs</b>

Suits 14.00 M  
Min. Block



Front Elevation