

MELBOURNE RANGE 33



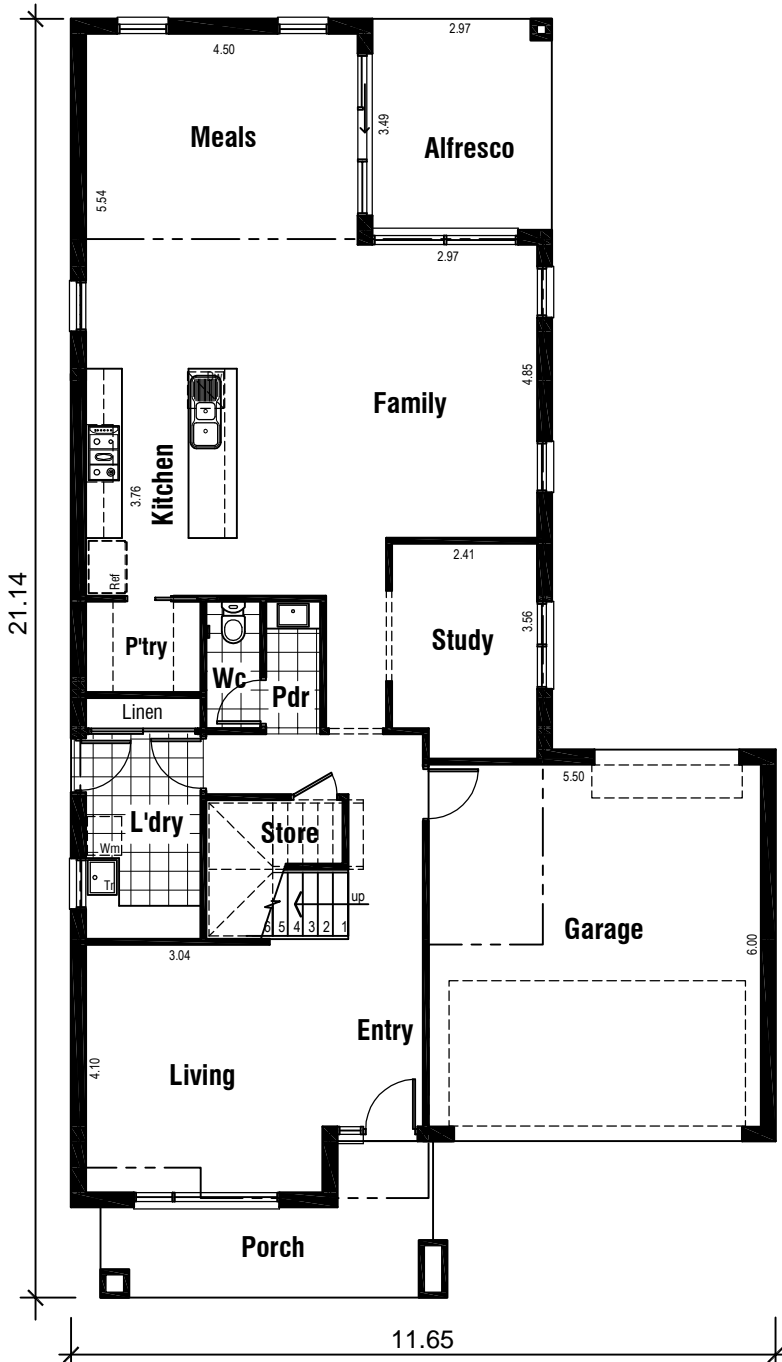
Areas Analysis :

Ground Floor :	129.11 m2	13.90 sq
First Floor :	112.33 m2	12.09 sq
Garage :	36.65 m2	
Alfresco :	10.37 m2	
Porch :	9.98 m2	
Balcony :	9.46 m2	
Total :	307.90 m2	33.14 sq

Suits 14.0 M
Min. Block

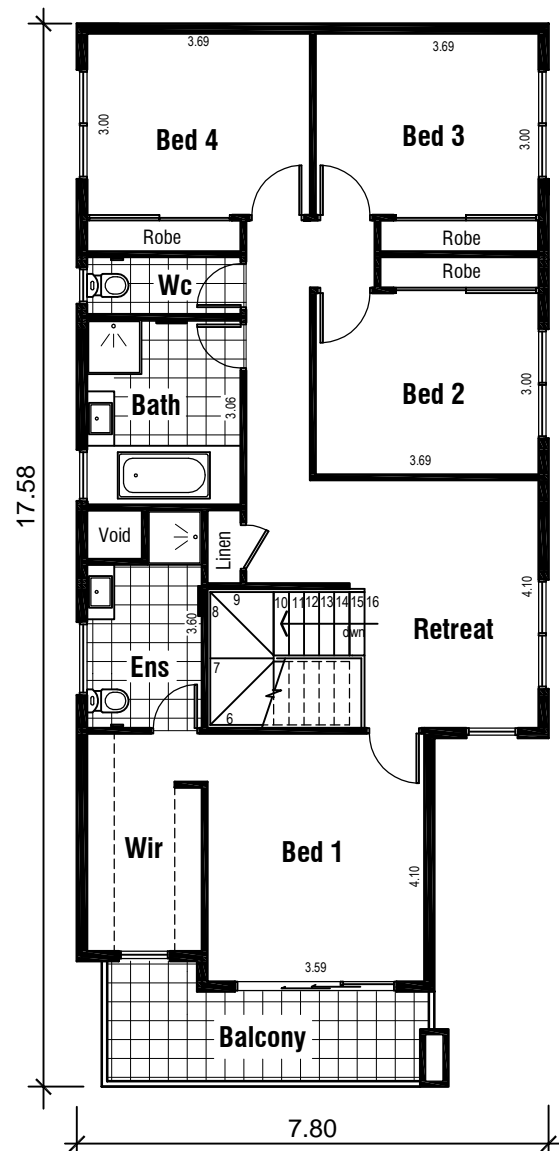


Front Elevation



Ground Floor Plan

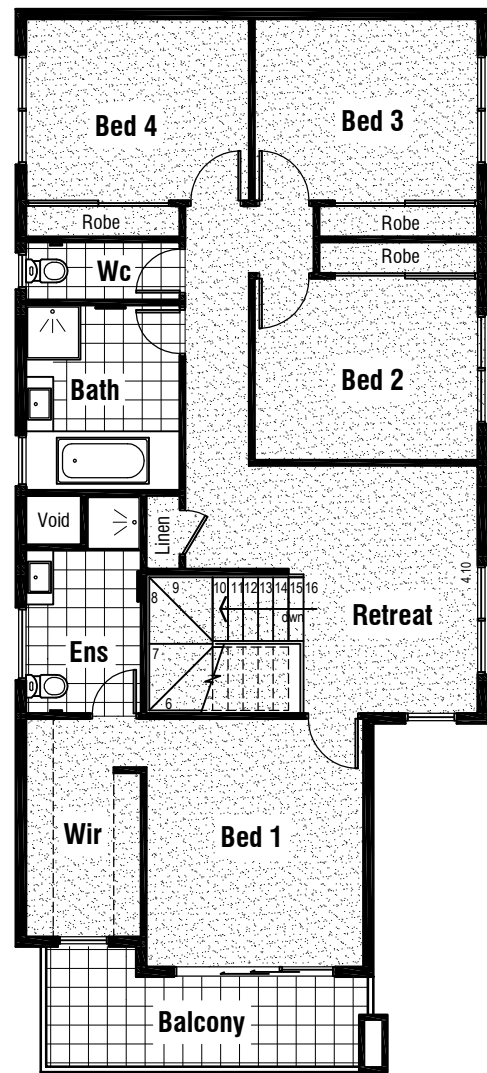
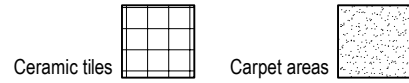
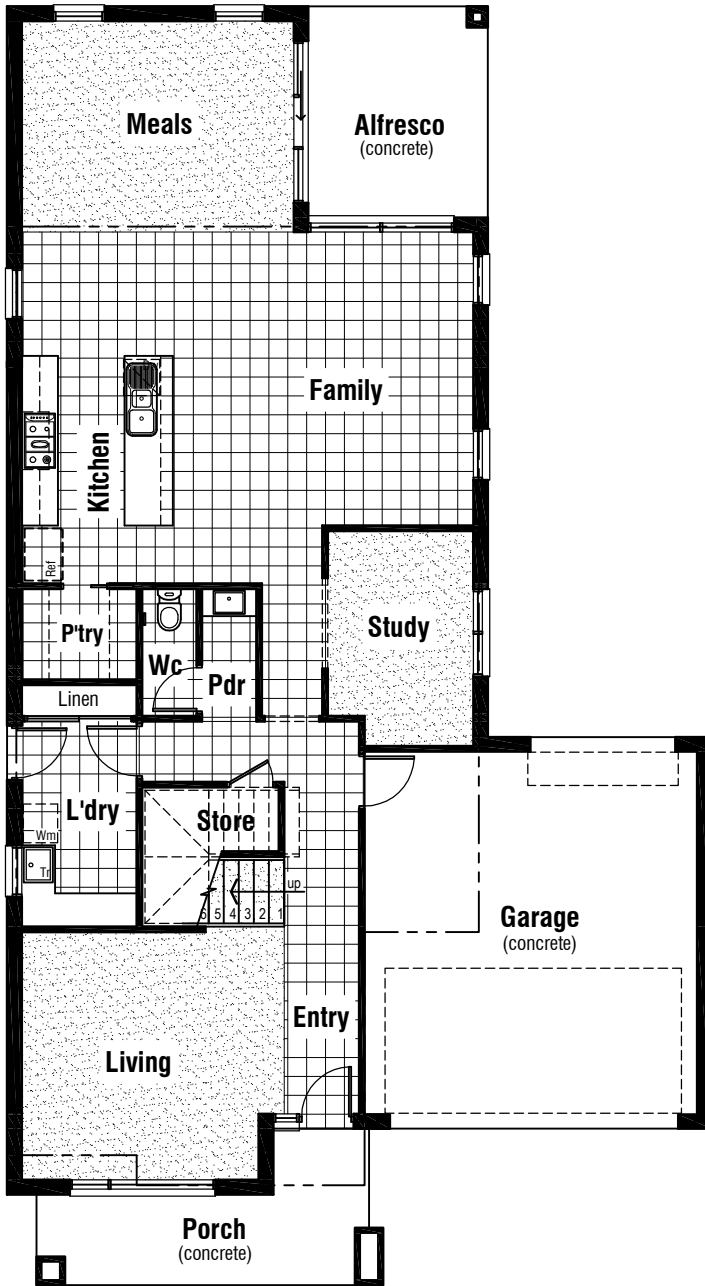
COPYRIGHT ORION HOMES



First Floor Plan

FEB 2015

MELBOURNE RANGE 33



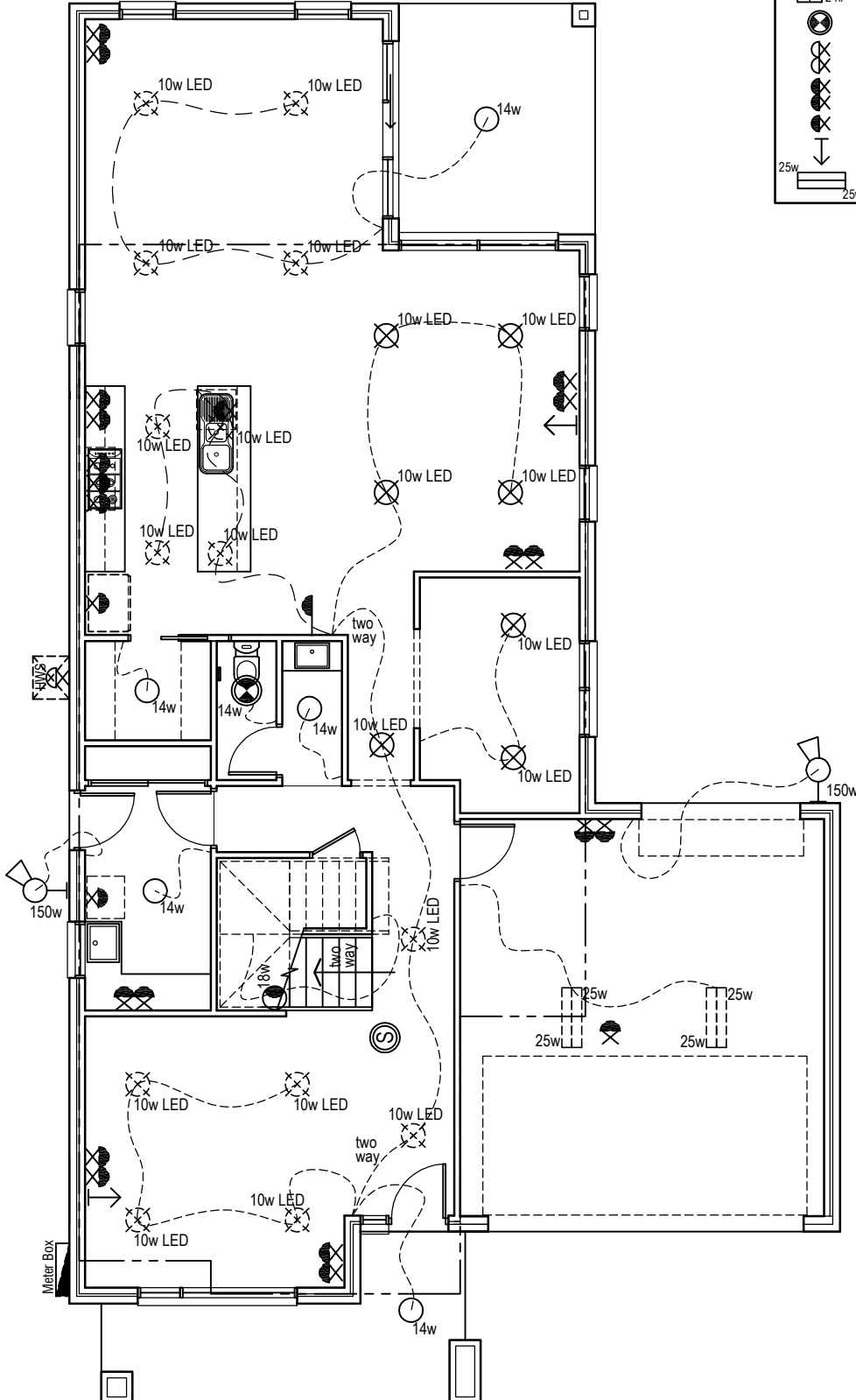
Floor Coverings Plan

MELBOURNE RANGE

32



Electrical Legend	
	Smoke Alarm
	Electrical meter box
	Ceiling mounted 14 watt globe outlet
	Ceiling mounted 35 watt halogen light
	Ceiling mounted 10 watt LED downlight
	10 watt wall mounted flush light. 300mm above stair tread
	Phone Point
	Wall mounted external flood light with 150 watt globe
	3 in 1 - Exhaust Fan with 'draft stopper', Light & 2 x Heat globes
	Exhaust Fan & Light - with 'draft stopper'
	Weatherproof External Double GPO
	Double GPO
	Single GPO
	TV point
	Ceiling mounted fluro light with 2 x 25 watt globe



Wattage Allowance	
Internal of dwelling - (Class 1)	
Proposed total wattage of light fittings:	452.00 w
Max allowable wattage:	1207.20 w
Internal of garage - (Class 10)	
Proposed total wattage of light fittings:	100.00 w
Max allowable wattage:	109.95 w
Porch, Alfresco, Balconies etc.. - (Class 1)	
Proposed total wattage of light fittings:	28.00 w
Max allowable wattage:	119.24 w

Proposed Ground Floor Electrical Plan

1 : 100

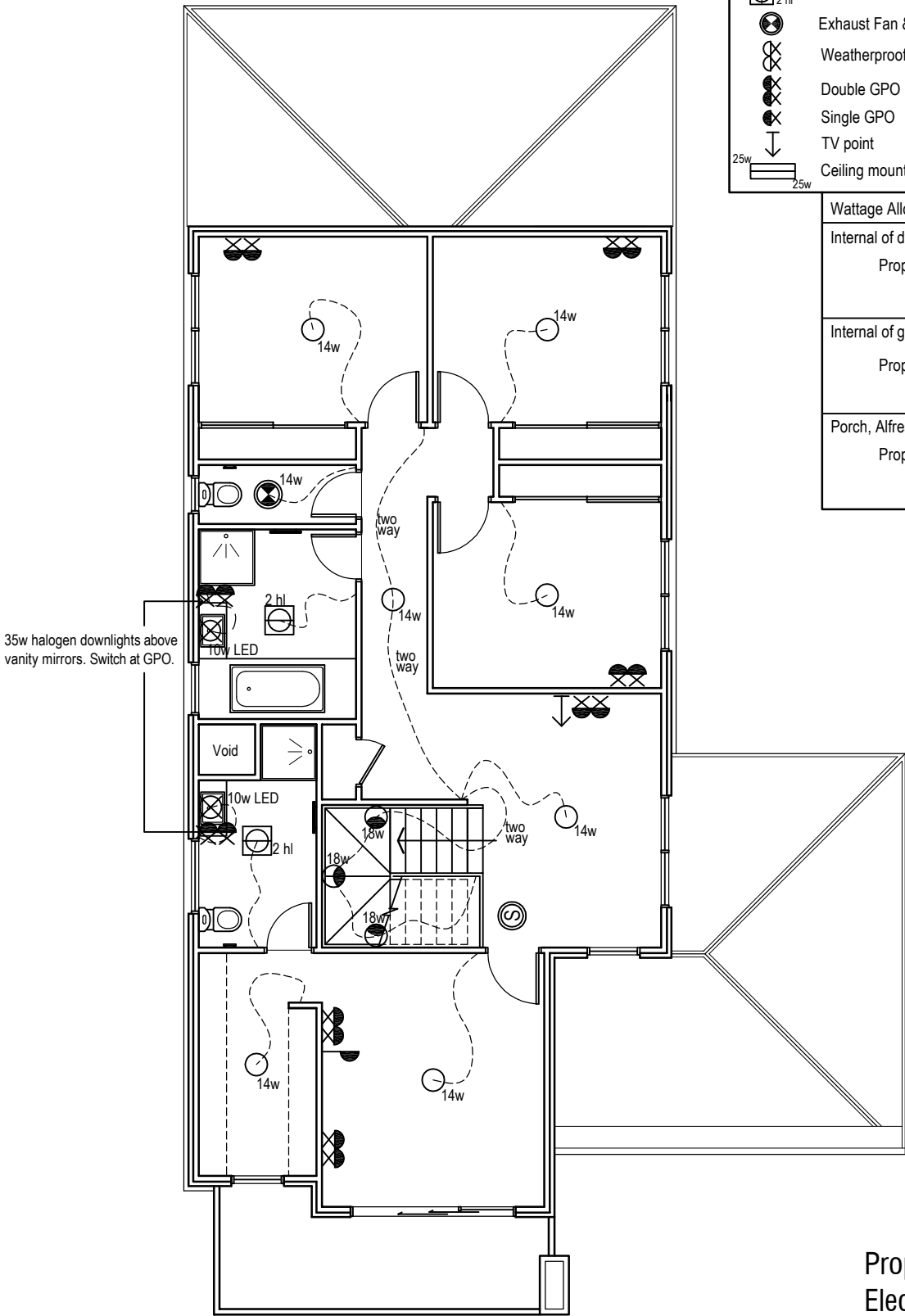
MELBOURNE RANGE

32



Electrical Legend	
	Smoke Alarm
	Electrical meter box
	Ceiling mounted 14 watt globe outlet
	Ceiling mounted 10 watt LED downlight
	18 watt wall mounted flush light. 300mm above stair tread
	Phone Point
	Wall mounted external flood light with 150 watt globe
	3 in 1 - Exhaust Fan with 'draft stopper', Light & 2 x Heat globes
	Exhaust Fan & Light - with 'draft stopper'
	Weatherproof External Double GPO
	Double GPO
	Single GPO
	TV point
	Ceiling mounted fluro light with 2 x 25 watt globe

Wattage Allowance		
Internal of dwelling - (Class 1)		
Proposed total wattage of light fittings:	452.00	w
Max allowable wattage:	1207.20	w
Internal of garage - (Class 10)		
Proposed total wattage of light fittings:	100.00	w
Max allowable wattage:	109.95	w
Porch, Alfresco, Balconies etc.. - (Class 1)		
Proposed total wattage of light fittings:	28.00	w
Max allowable wattage:	119.24	w



Proposed First Floor
Electrical Plan

1 : 100

MELBOURNE RANGE 33



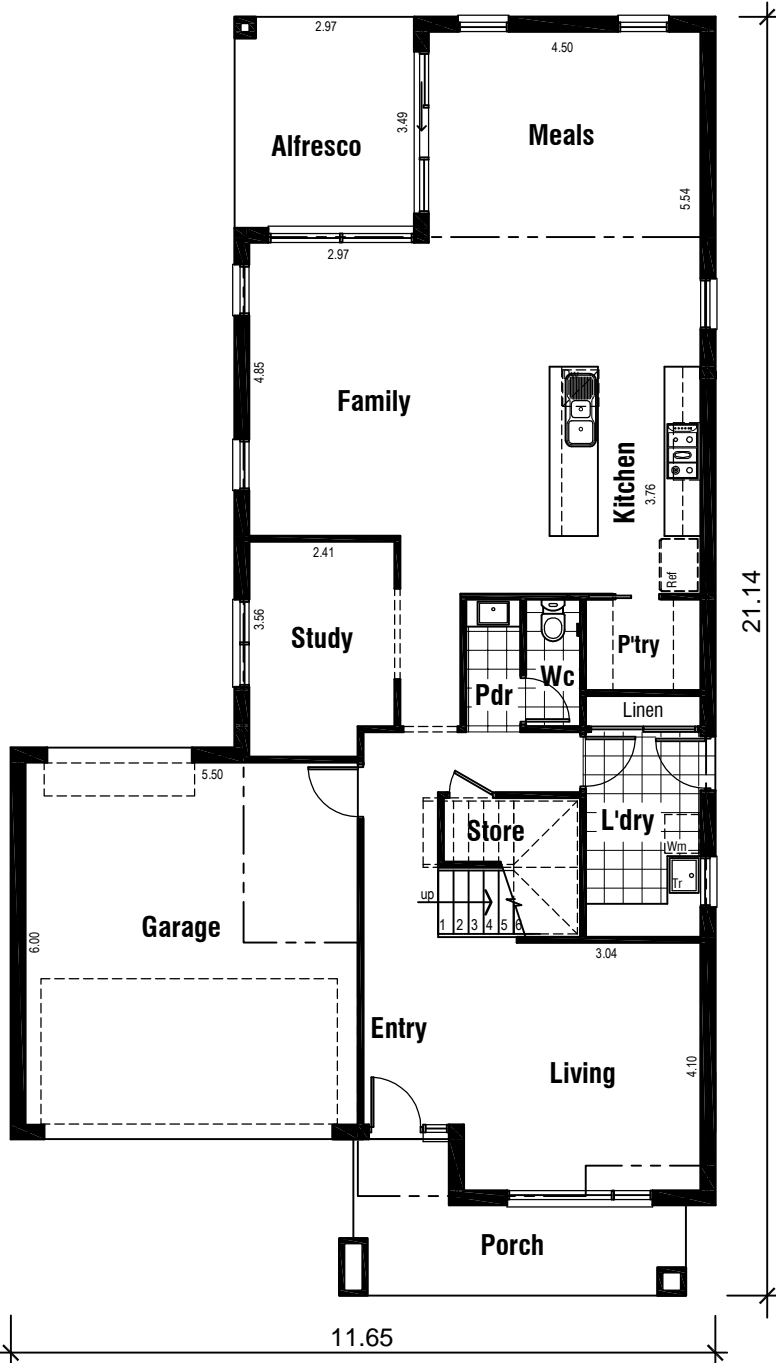
Areas Analysis :

Ground Floor :	129.11 m2	13.90 sq
First Floor :	112.33 m2	12.09 sq
Garage :	36.65 m2	
Alfresco :	10.37 m2	
Porch :	9.98 m2	
Balcony :	9.46 m2	
Total :	307.90 m2	33.14 sq

Suits 14.0 M
Min. Block

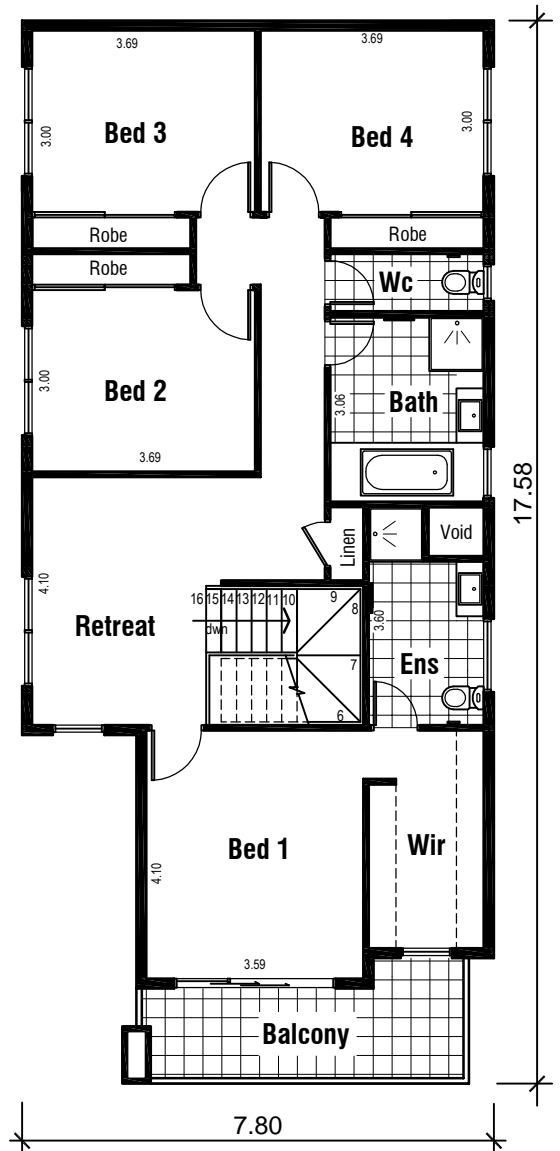


Front Elevation



Ground Floor Plan

COPYRIGHT ORION HOMES



First Floor Plan

FEB 2015