

MELBOURNE RANGE 32



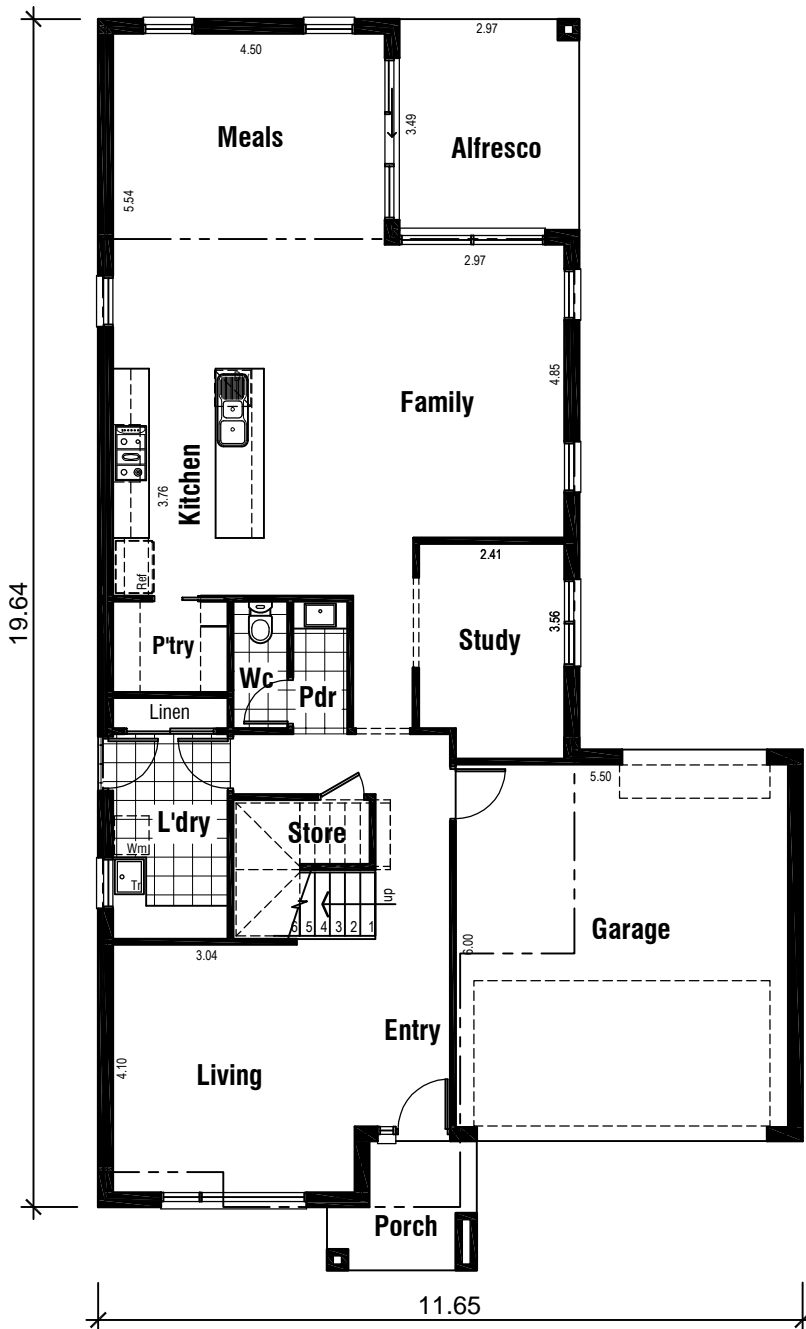
Areas Analysis :

Ground Floor :	128.89 m2	13.87 sq
First Floor :	116.67 m2	12.56 sq
Garage :	36.73 m2	
Alfresco :	10.36 m2	
Porch :	4.54 m2	
Total :	296.59 m2	31.93 sq

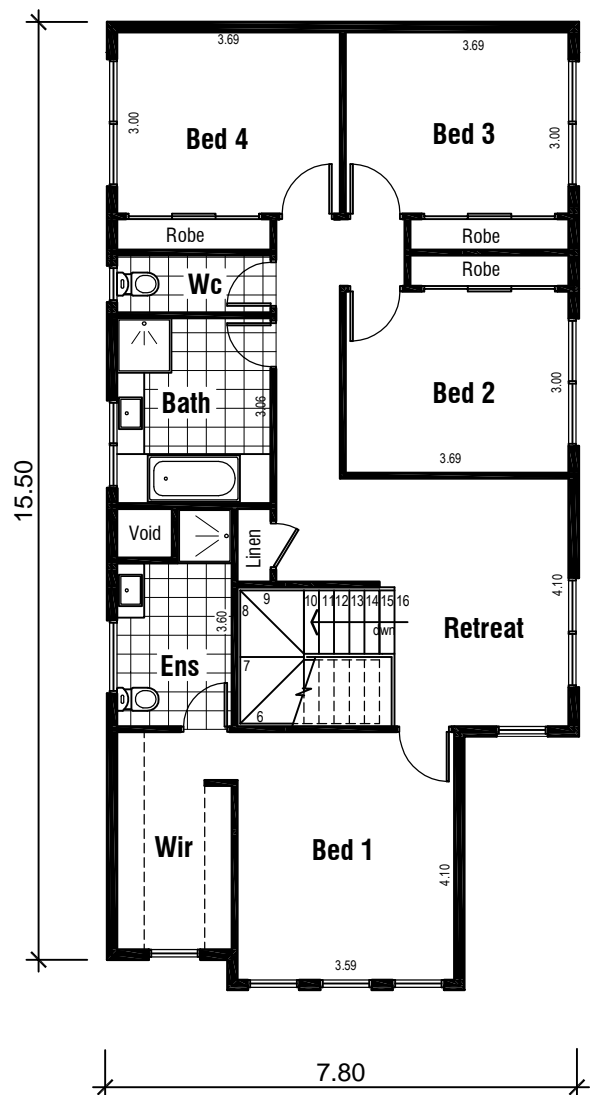
Suits 14.0 M
Min. Block



Front Elevation

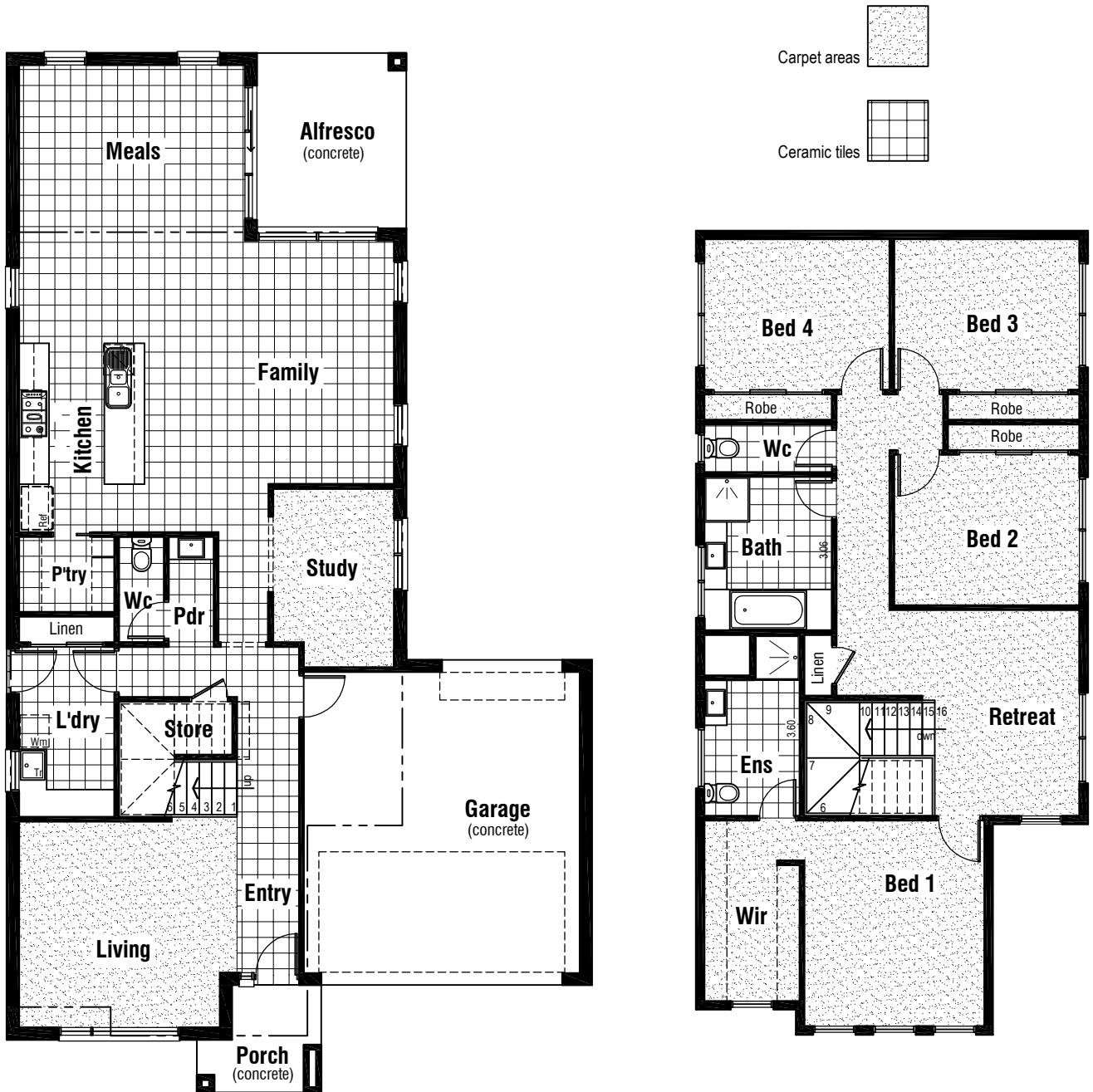


Ground Floor Plan



First Floor Plan

MELBOURNE RANGE 32






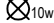


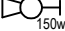
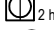






Floor Coverings Plan

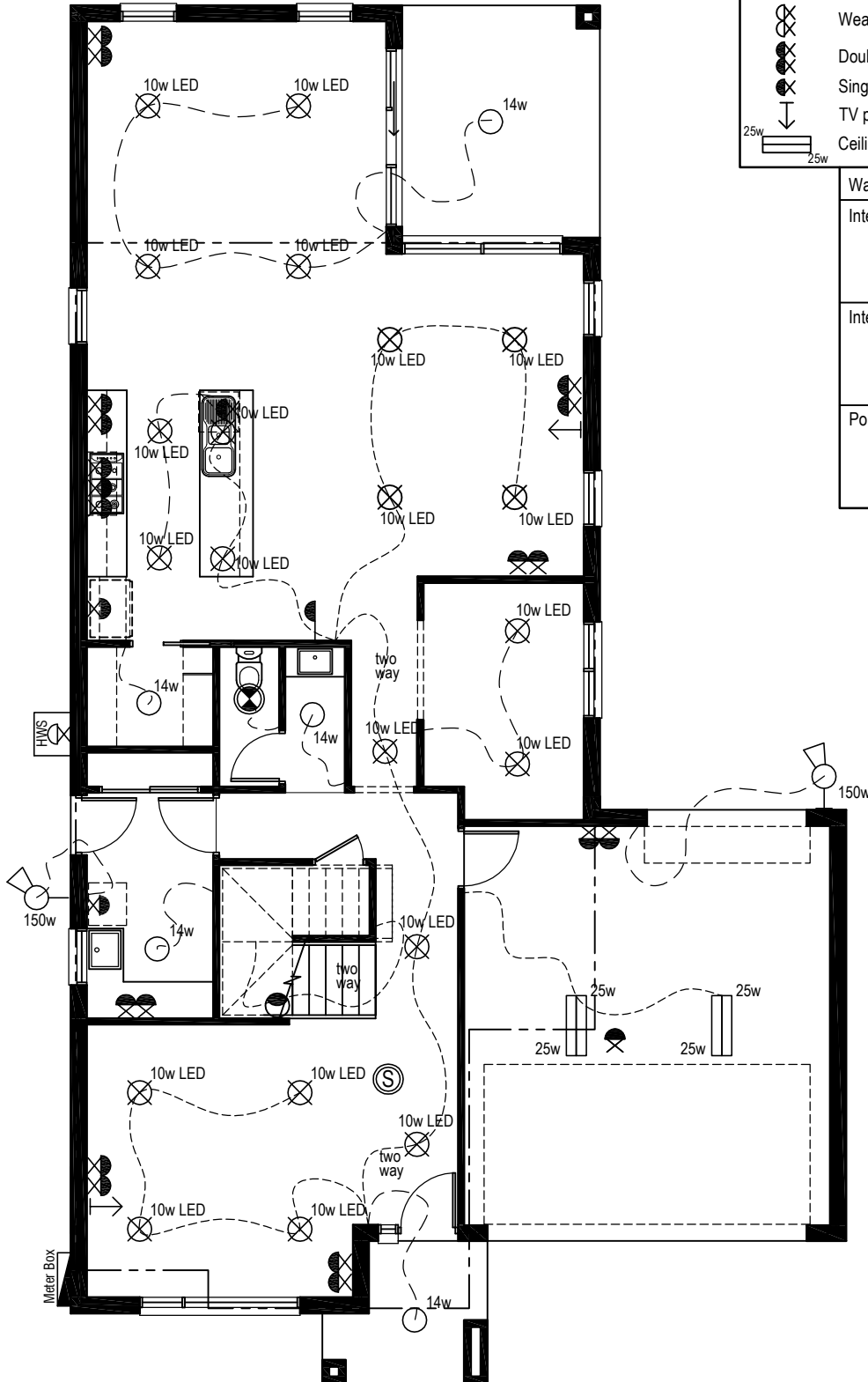
MELBOURNE RANGE

32



Electrical Legend

-  Smoke Alarm
-  Electrical meter box
-  Ceiling mounted 14 watt globe outlet
-  Ceiling mounted 10 watt LED downlight
-  18 watt wall mounted flush light. 300mm above stair tread
-  Phone Point
-  Wall mounted external flood light with 150 watt globe
-  3 in 1 - Exhaust Fan with 'draft stopper', Light & 2 x Heat globes
-  Exhaust Fan & Light - with 'draft stopper'
-  Weatherproof External Double GPO
-  Double GPO
-  Single GPO
-  TV point
-  Ceiling mounted fluro light with 2 x 25 watt globe



Wattage Allowance

Internal of dwelling - (Class 1)	
Proposed total wattage of light fittings:	424.00 w
Max allowable wattage:	1227.80 w
Internal of garage - (Class 10)	
Proposed total wattage of light fittings:	100.00 w
Max allowable wattage:	110.19 w
Porch, Alfresco, Balconies etc.. - (Class 1)	
Proposed total wattage of light fittings:	28.00 w
Max allowable wattage:	59.60 w

Proposed Ground Floor Electrical Plan




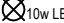


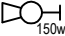
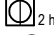





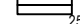
1 : 100

MELBOURNE RANGE

32

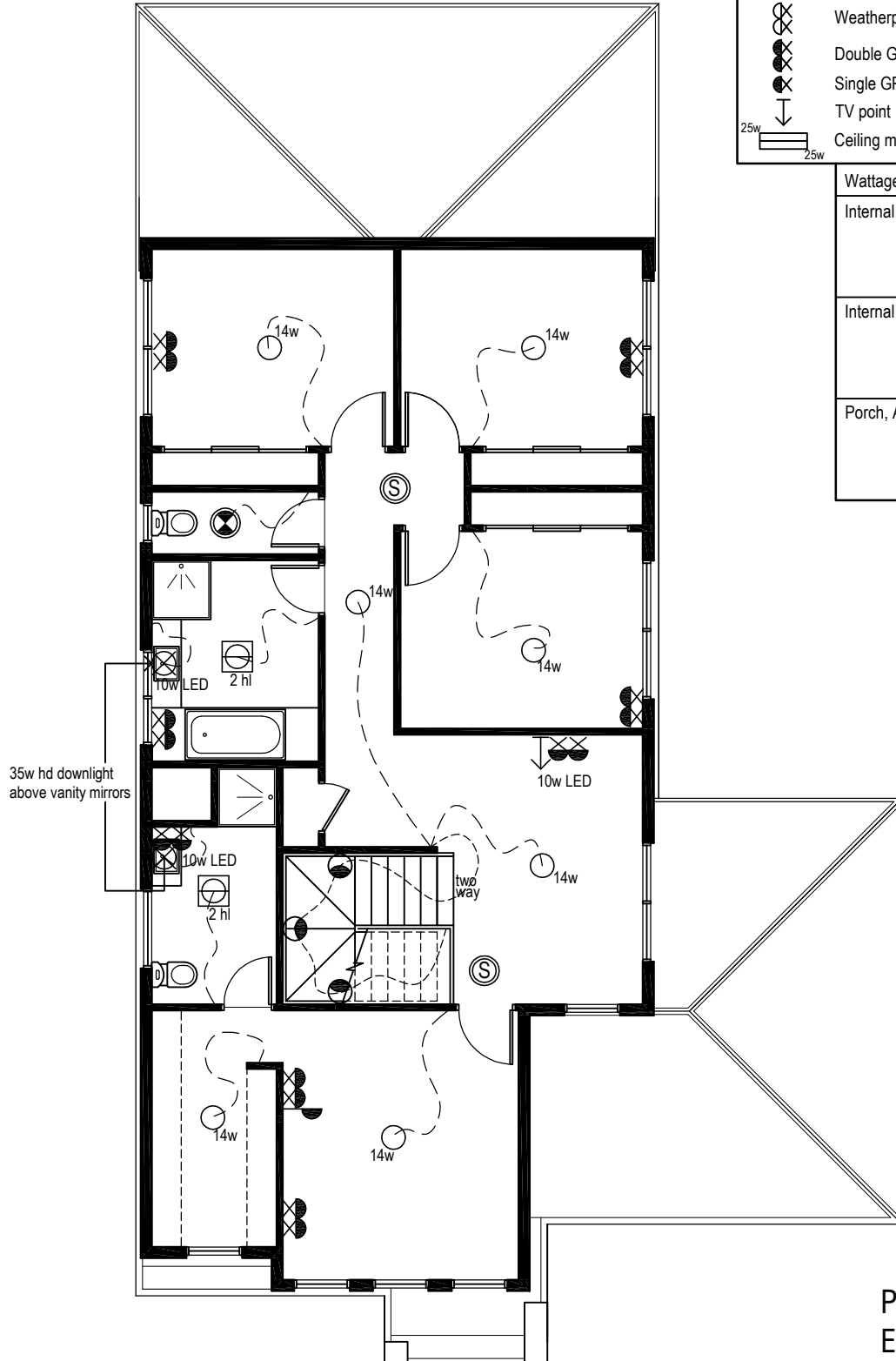


Electrical Legend

-  Smoke Alarm
-  Electrical meter box
-  Ceiling mounted 14 watt globe outlet
-  Ceiling mounted 10 watt LED downlight
-  18 watt wall mounted flush light. 300mm above stair tread
-  Phone Point
-  Wall mounted external flood light with 150 watt globe
-  3 in 1 - Exhaust Fan with 'draft stopper', Light & 2 x Heat globes
-  Exhaust Fan & Light - with 'draft stopper'
-  Weatherproof External Double GPO
-  Double GPO
-  Single GPO
-  TV point
-  Ceiling mounted fluro light with 2 x 25 watt globe

Wattage Allowance

Internal of dwelling - (Class 1)	
Proposed total wattage of light fittings:	424.00 w
Max allowable wattage:	1227.80 w
Internal of garage - (Class 10)	
Proposed total wattage of light fittings:	100.00 w
Max allowable wattage:	110.19 w
Porch, Alfresco, Balconies etc.. - (Class 1)	
Proposed total wattage of light fittings:	28.00 w
Max allowable wattage:	59.60 w



Proposed First Floor Electrical Plan

1 : 100

MELBOURNE RANGE 32



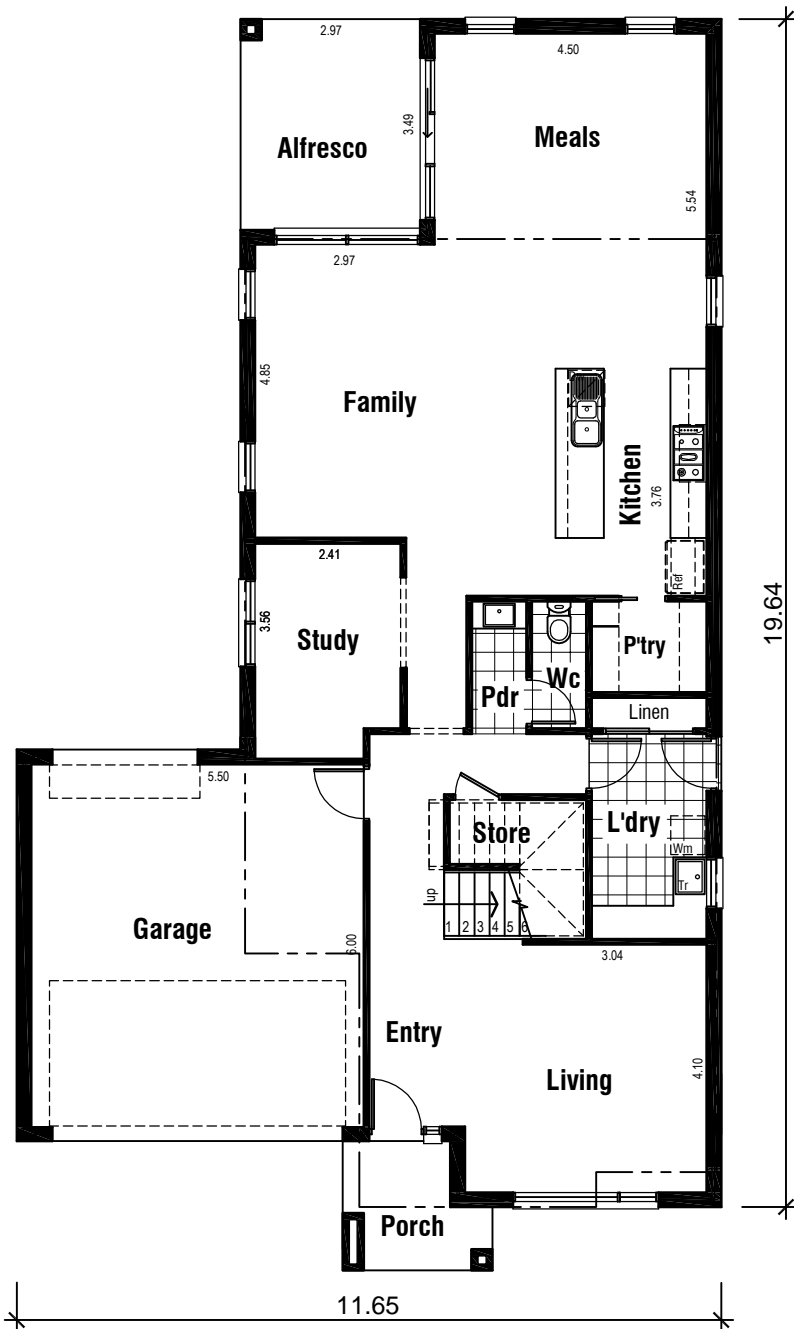
Areas Analysis :

Ground Floor :	128.89 m2	13.87 sq
First Floor :	116.67 m2	12.56 sq
Garage :	36.73 m2	
Alfresco :	10.36 m2	
Porch :	4.54 m2	
Total :	296.59 m2	31.93 sq

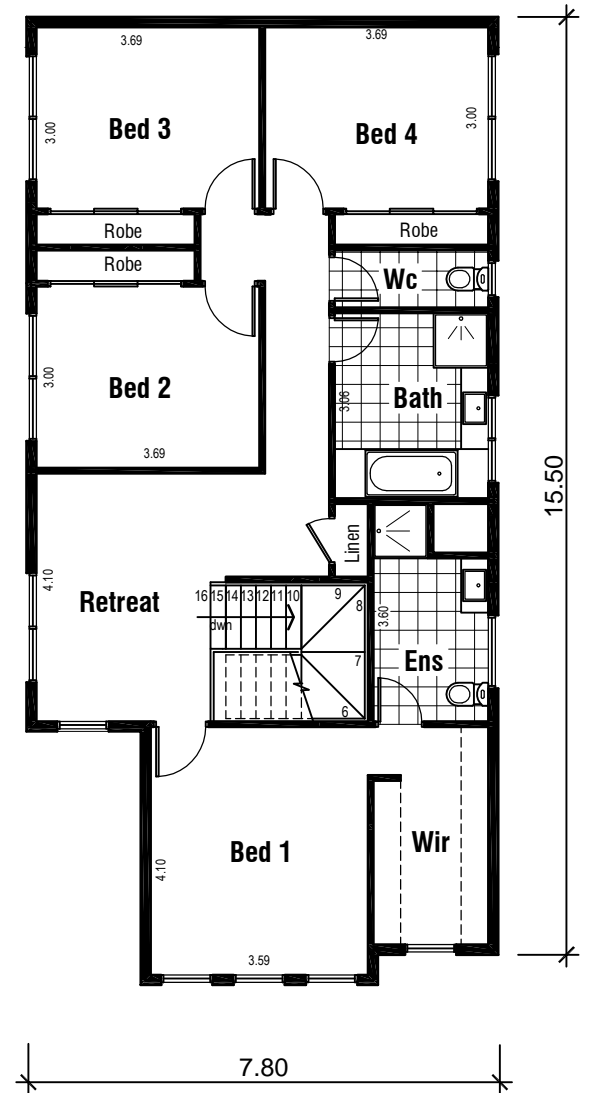
Suits 14.0 M
Min. Block



Front Elevation



Ground Floor Plan



First Floor Plan