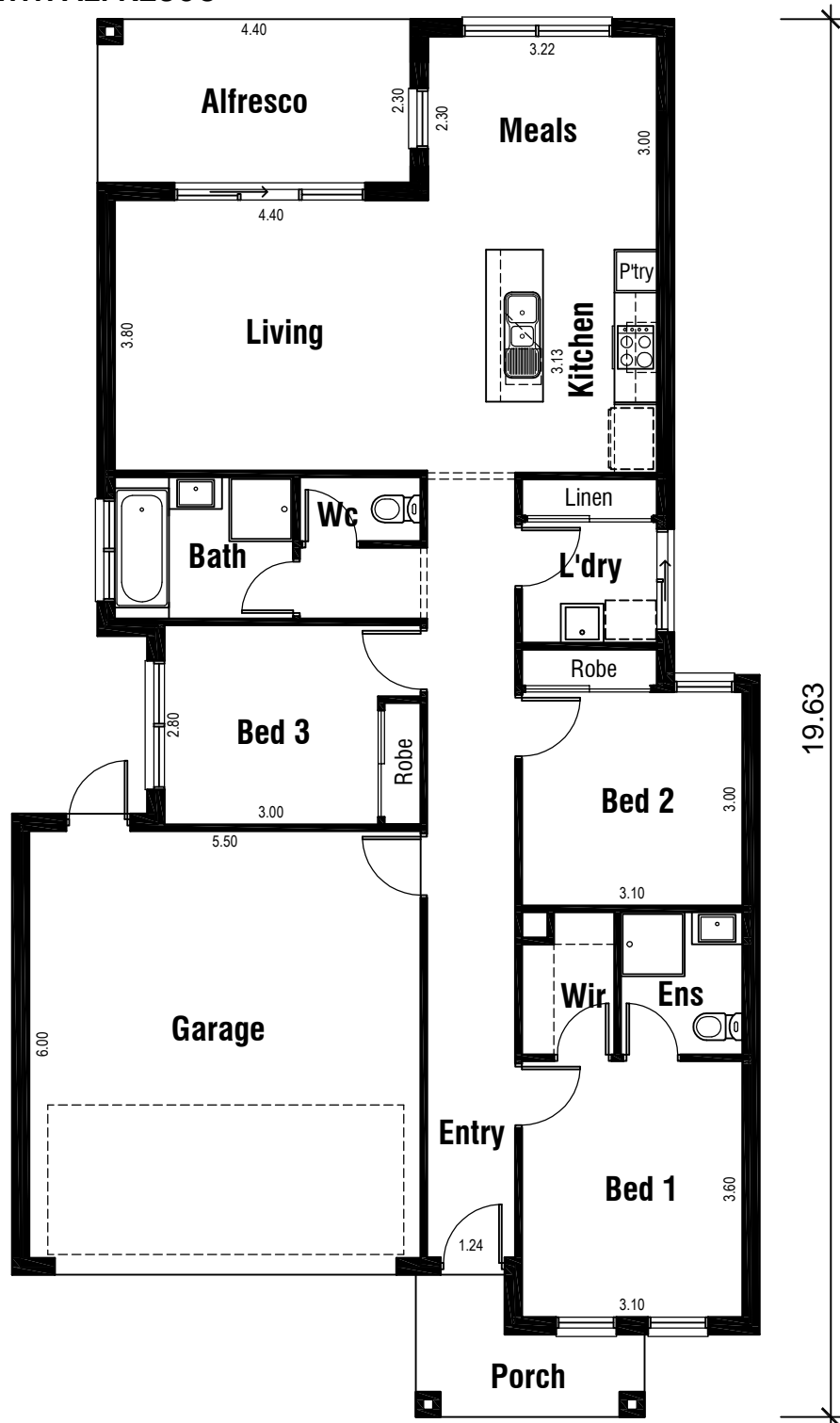


# ELECTRA 10.50

WITH ALFRESCO

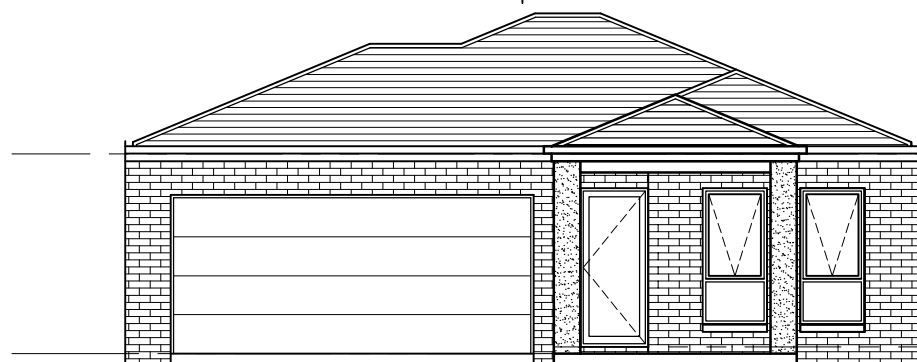


### Areas Analysis :

Dwelling :	115.59 m2	12.44 sqs
Garage :	36.21 m2	
Porch :	4.78 m2	
Alfresco :	10.12 m2	
<b>Total :</b>	<b>166.70 m2</b>	<b>17.94 sqs</b>

Suits 10.50 M  
Min. Block

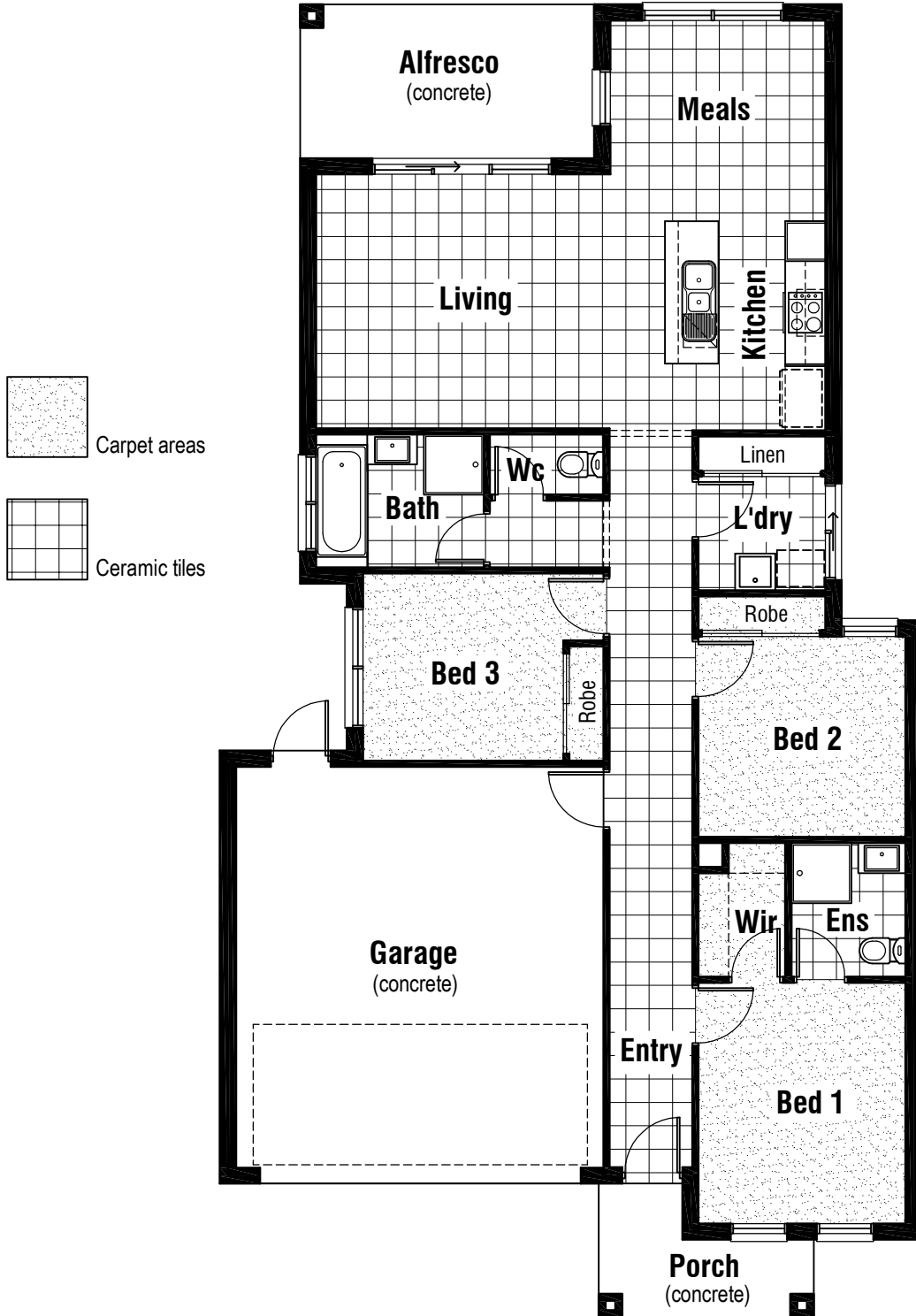
Floor Plan  
1:100



Front Elevation  
1:100

# ELECTRA 10.50

WITH ALFRESCO



## Floor Coverings Plan




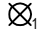

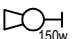
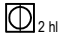






1:100

# ELECTRA 10.50

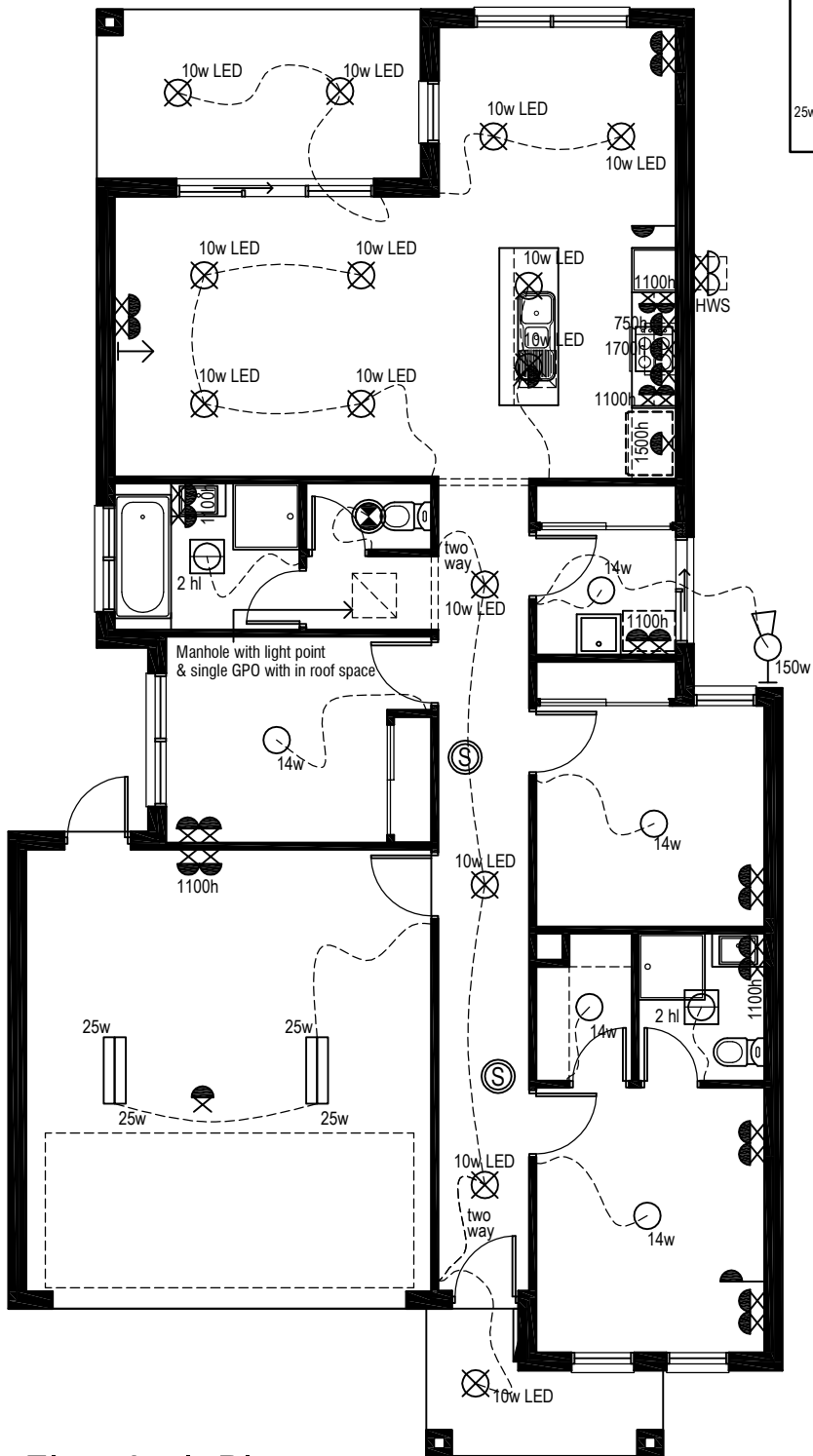
WITH ALFRESCO



## Electrical Legend

-  Smoke Alarm
-  Electrical meter box
-  14w Ceiling mounted Oyster fitting with 14 watt globe
-  10w LED Ceiling mounted 10 watt L.E.D downlight
-  Phone Point
-  150w Wall mounted external flood light with 150 watt globe
-  2 hl 3 in 1 - Exhaust Fan with 'draft stopper', Light & 2 x Heat globes
-  Exhaust Fan & Light - with 'draft stopper'
-  Weatherproof External Double GPO
-  Double GPO
-  Single GPO
-  TV point
-  25w Ceiling mounted fluro light with double 25 watt globe

Wattage Allowance	
Internal of dwelling - (Class 1)	
Proposed total wattage of light fittings:	194.00 w
Max allowable wattage:	503.30 w
Internal of garage - (Class 10)	
Proposed total wattage of light fittings:	100.00 w
Max allowable wattage:	70.74 w
Porch, Alfresco, Balconies etc.. - (Class 1)	
Proposed total wattage of light fittings:	30.00 w
Max allowable wattage:	59.60 w

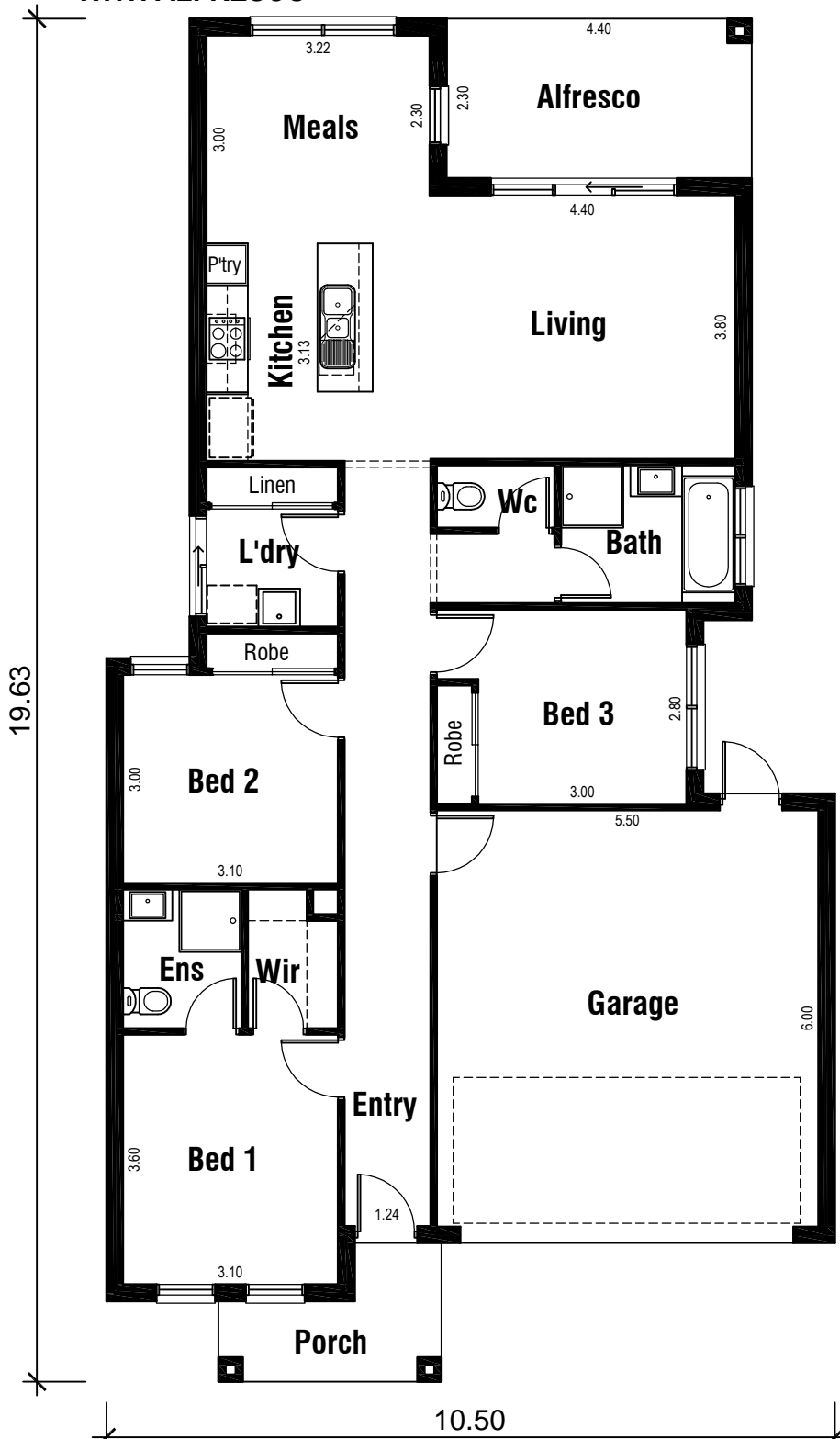


## Electrical Plan

1 : 100

# ELECTRA 10.50

WITH ALFRESCO

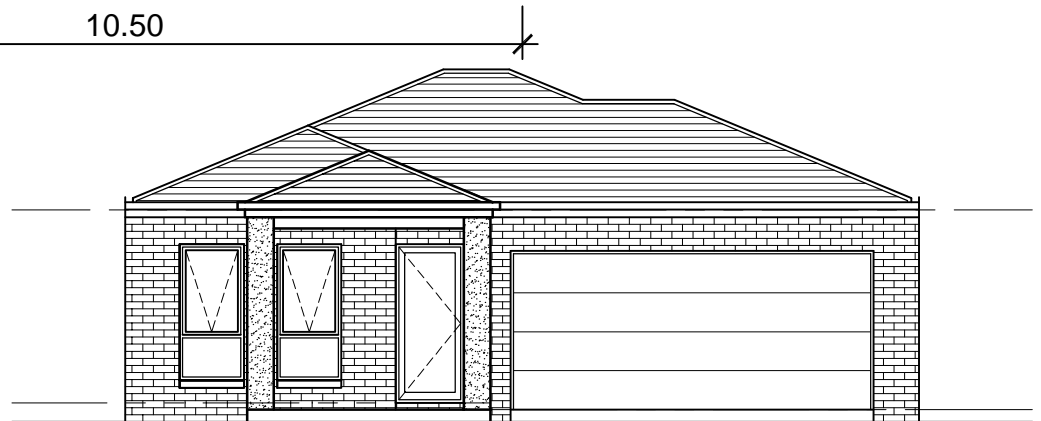


### Areas Analysis :

Dwelling :	115.59 m2	12.44 sqs
Garage :	36.21 m2	
Porch :	4.78 m2	
Alfresco :	10.12 m2	
<b>Total :</b>	<b>166.70 m2</b>	<b>17.94 sqs</b>

Suits 10.50 M  
Min. Block

Floor Plan  
1:100



Front Elevation  
1:100