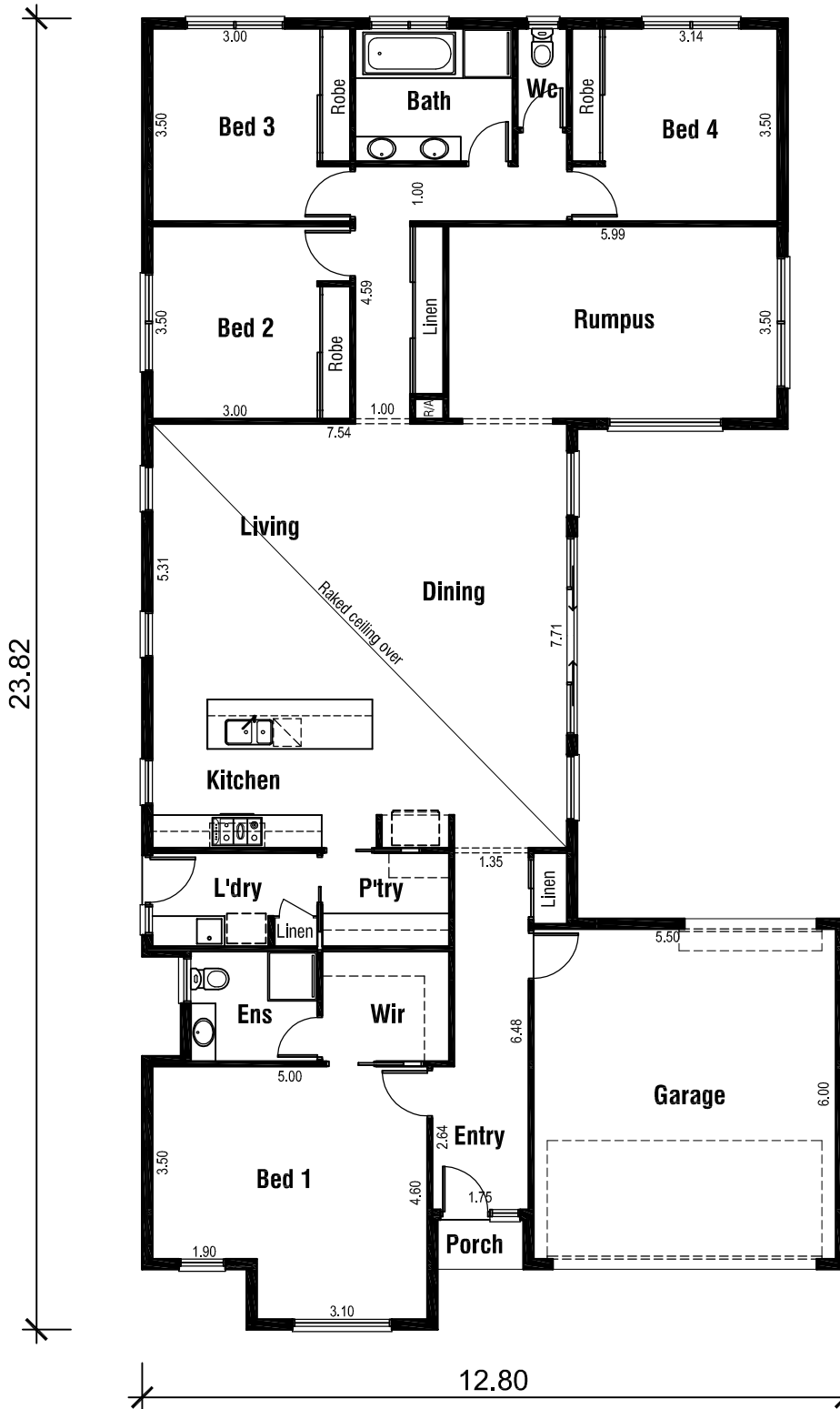


# CAMDEN 26

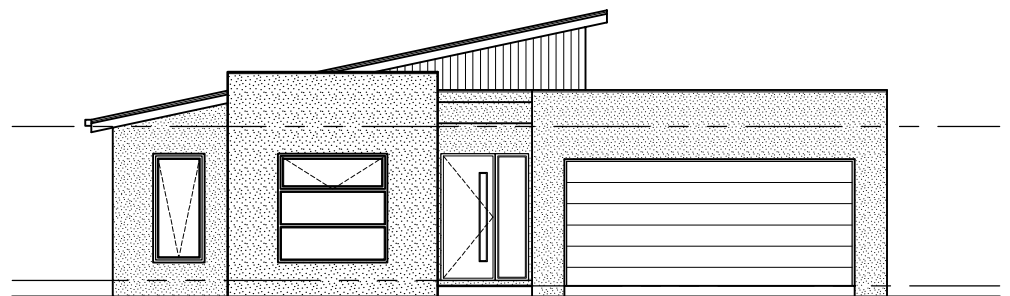


### Areas Analysis :

Dwelling :	203.80 m2	21.93 sqs
Garage :	36.23 m2	
Porch :	1.48 m2	
<b>Total :</b>	<b>241.51 m2</b>	<b>26.00 sqs</b>

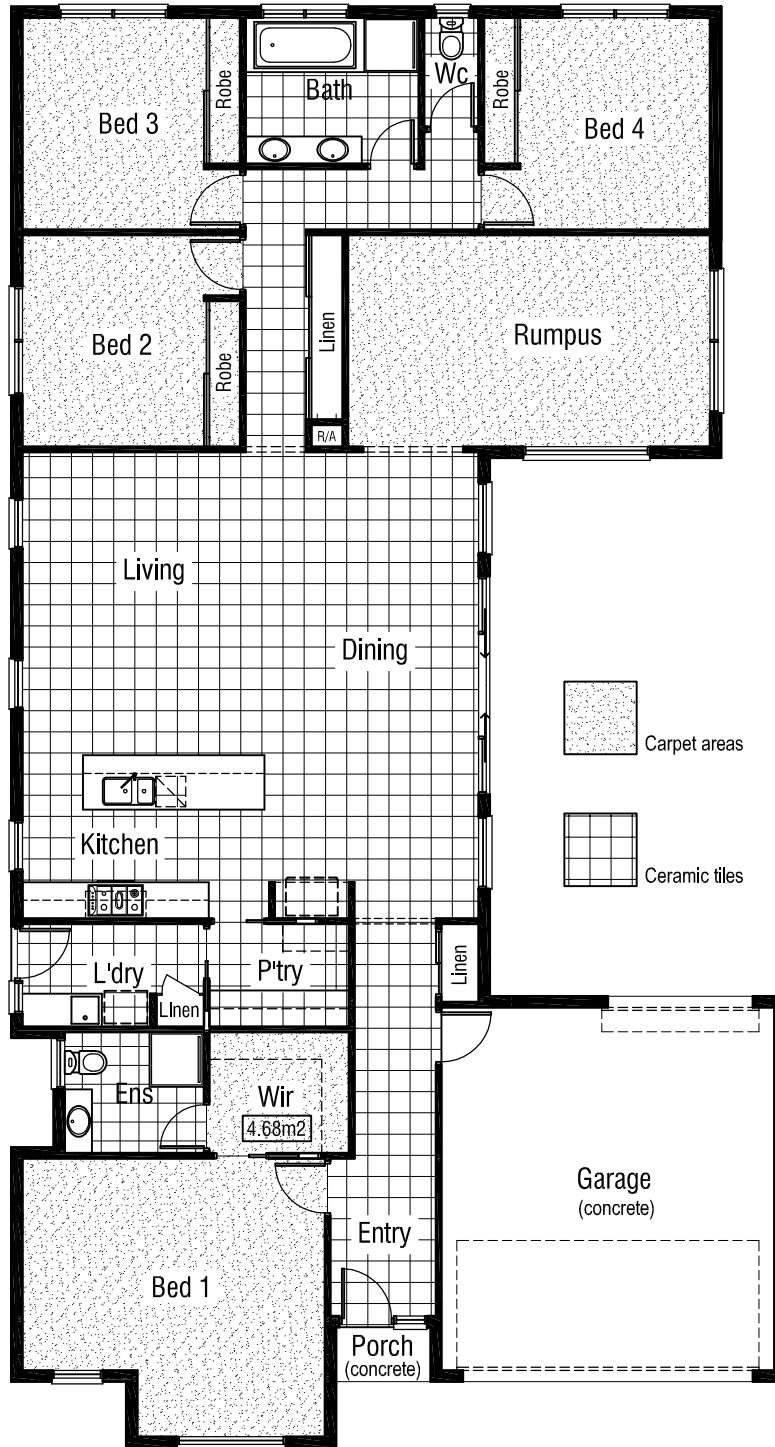
Suits 14.0 M  
Min. Block

Floor Plan



Front Elevation

# CAMDEN 26




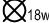
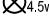
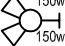
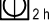





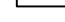



Floor Coverings Plan

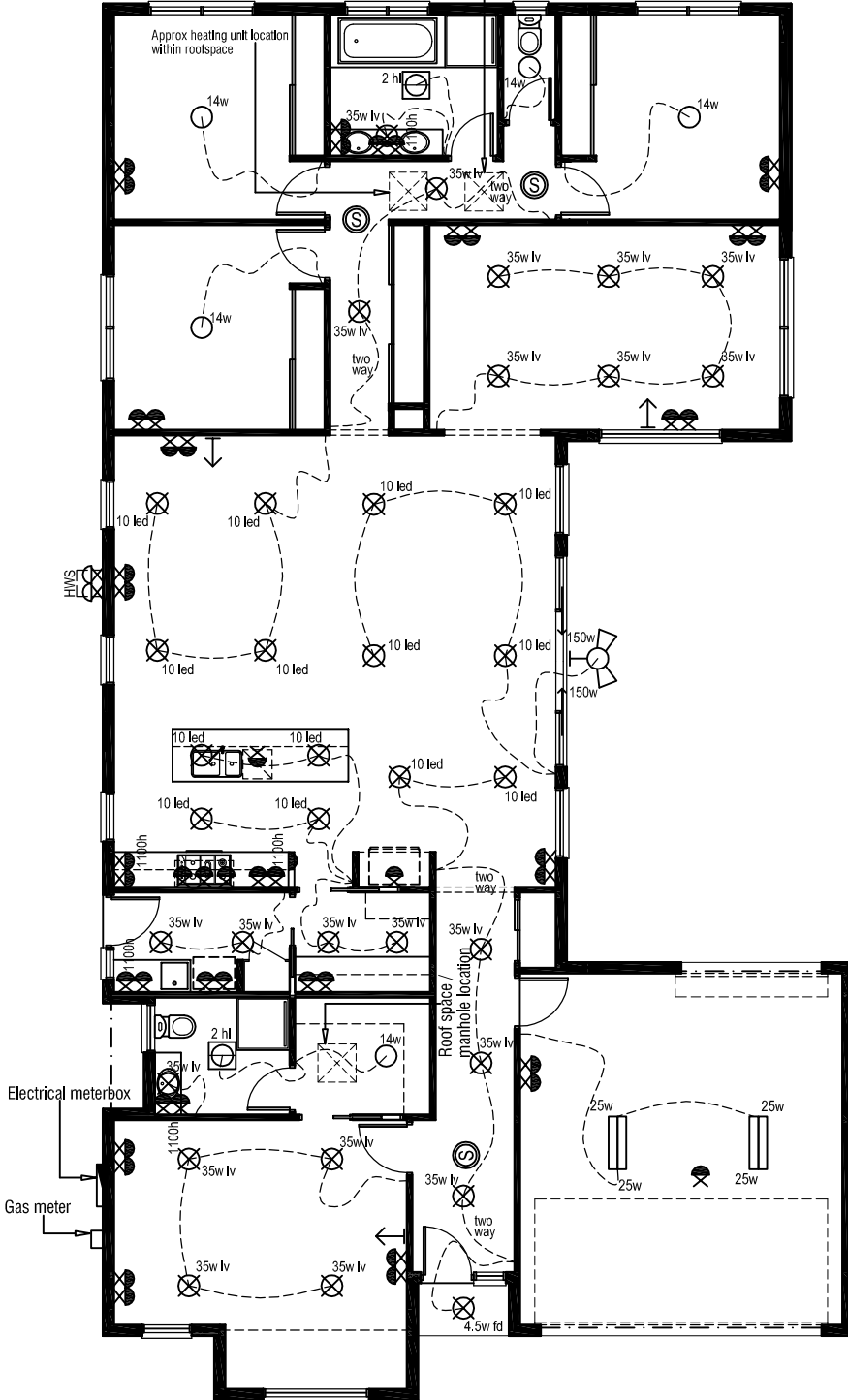


# CAMDEN 26

## Electrical Legend

-  Smoke Alarm
-  Electrical meter box
-  Ceiling mounted 14 watt globe light outlet
-  Ceiling mounted 70mm downlight 18 watt fluoro light
-  Ceiling mounted downlight 4.5 watt fluoro light
-  Wall mounted double external flood light with 150 watt globes
-  3 in 1 - Exhaust Fan with 'draft stopper', Light & 2 x Heat globes
-  Exhaust Fan - with 'draft stopper'
-  Weatherproof External Double GPO
-  Double GPO
-  Single GPO
-  TV point
-  Ceiling mounted double fluoro light with 25 watt globe

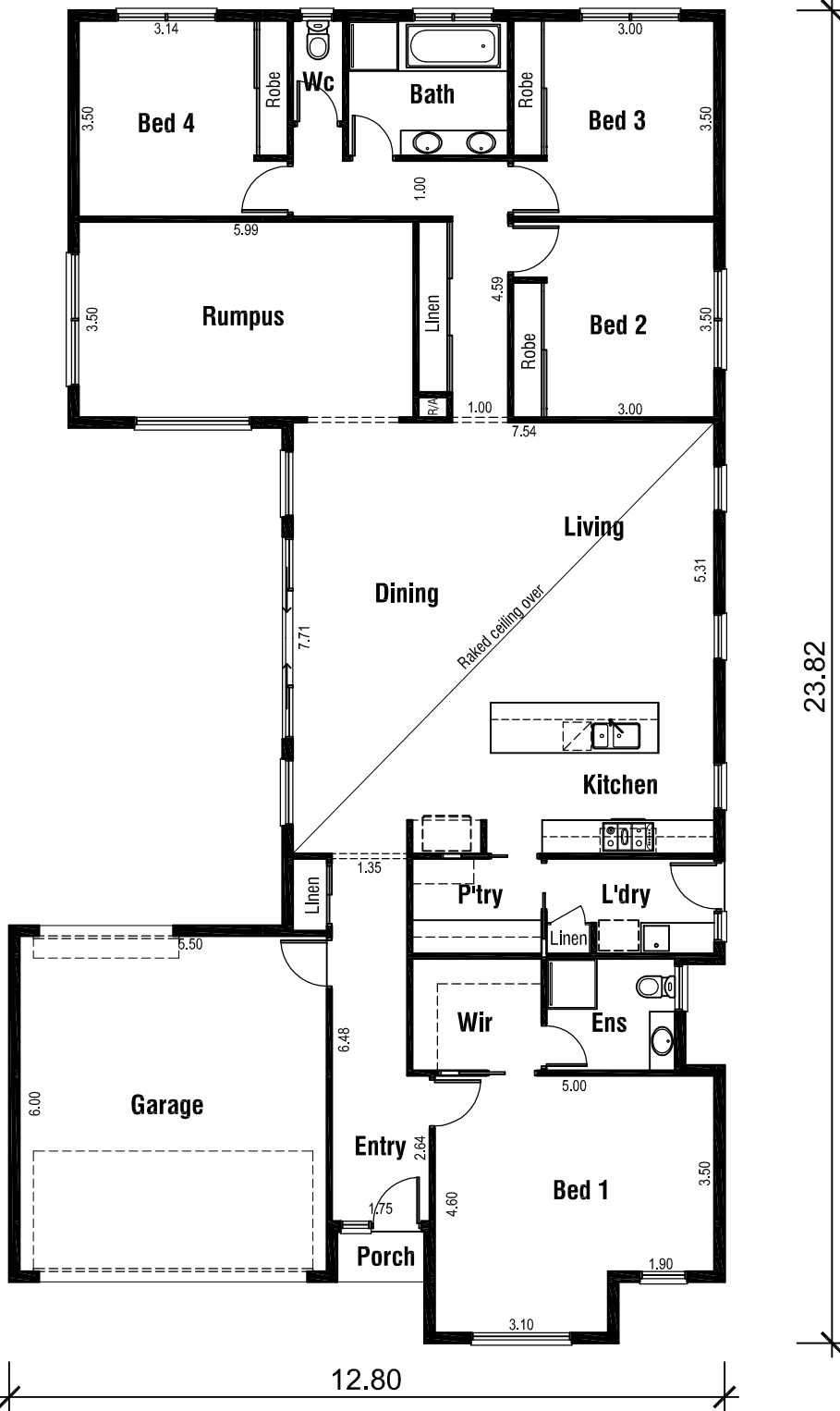
Roof space / manhole location  
 14w  
 Single GPO & 14w globe light outlet  
 within roof space for heating unit



Wattage Allowance	
Internal of dwelling - (Class 1)	
Proposed total wattage of light fittings:	937.00 w
Max allowable wattage:	1019.00 w
Internal of garage - (Class 10)	
Proposed total wattage of light fittings:	100.00 w
Max allowable wattage:	108.69 w
Porch, Alfresco, Balconies etc.. - (Class 1)	
Proposed total wattage of light fittings:	4.50 w
Max allowable wattage:	5.92 w

Electrical Plan

# CAMDEN 26

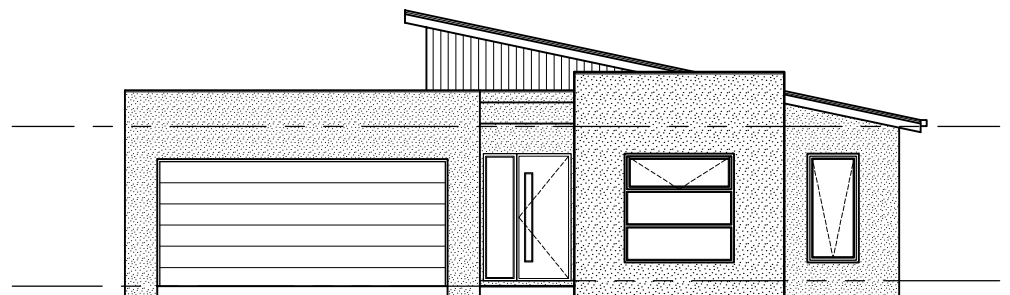


### Areas Analysis :

Dwelling :	203.80 m2	21.93 sqs
Garage :	36.23 m2	
Porch :	1.48 m2	
<b>Total :</b>	<b>241.51 m2</b>	<b>26.00 sqs</b>

Suits 14.0 M  
Min. Block

Floor Plan



Front Elevation